



"Your Solutions Partner"

# Specifications

F.O.B. Sedalia, Missouri 65301



ASI-3E-SW

### OPTIONS:

- 3 phase wiring (except **ASI-1E-SW**)
- Manifold, per well
- Master globe valve
- Individual valves - per section
- Glass display shelves - **98x Series**
- Serving shelves - **956/956-460-x Series**
- Self-service canopies - **TS530-xx, TS530-xx-1SN**
- Buffet shelves - **83x, 93xFL, 93xHT, 93xBL Series**
- Telescope covers - **546, 548**
- Hardwood carving board - **445W**
- S/S carving surface - **445-S**
- S/S dish shelf - **444-S**
- Removable S/S carving station - **CS-2**
- Adapter Plates- **31, 32, 33**
- Drop-in style top rim

### AGENCY LISTINGS:



**DUKE MANUFACTURING CO.**  
2305 N. Broadway  
St. Louis, MO 63102

800.735.3853 Toll Free  
314.231.1130 In Missouri  
314.231.5074 Fax  
www.dukemfg.com

Approval Stamp(s):

### PROJECT INFORMATION:

PROJECT: \_\_\_\_\_  
ITEM: \_\_\_\_\_  
QUANTITY: \_\_\_\_\_

### MODEL:

## Slide-Ins - Hot Food Electric - Sealed Wells

- ASI-1E-SW** 18-1/4"L x 23-1/2"W x 12-3/4"H
- ASI-2E-SW** 32-1/4"L x 23-1/2"W x 12-3/4"H
- ASI-3E-SW** 46-1/4"L x 23-1/2"W x 12-3/4"H
- ASI-4E-SW** 60-1/4"L x 23-1/2"W x 12-3/4"H
- ASI-5E-SW** 74-1/4"L x 23-1/2"W x 12-3/4"H
- ASI-6E-SW** 88-1/4"L x 23-1/2"W x 12-3/4"H

### TOP RIM:

- Heavy gauge, 300 Series stainless steel
- 15/16" overhang on back and ends
- Reinforced rim
- Vinyl foam gasket as sealant
- Die-stamped openings - 12-1/16" x 20-1/16"

### HEAT COMPARTMENTS:

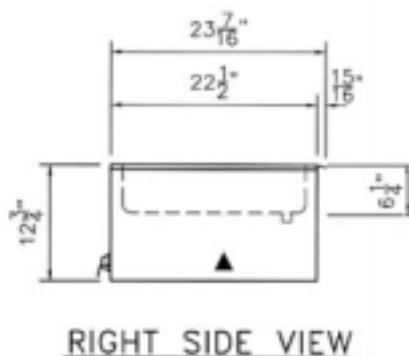
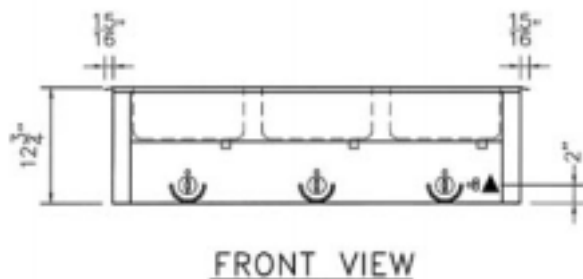
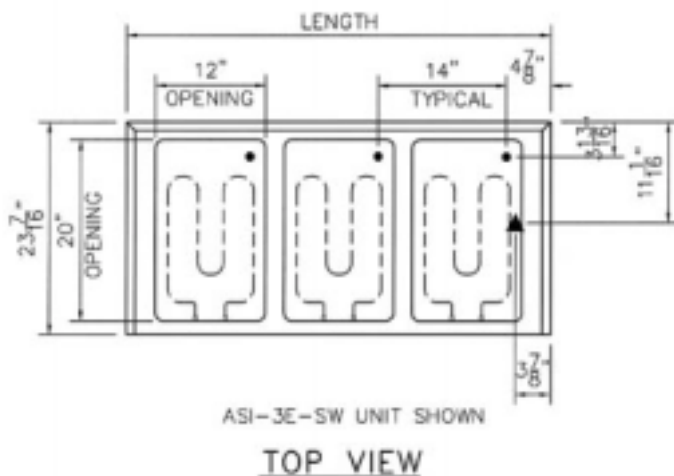
- 6-1/4" deep stainless steel liner, wet or dry operation
- Element under each compartment
  - 750 watt, 120 Volt/1 Ph
  - 900 watt, 208 Volt/1 Ph
  - 1200 watt, 240 Volt/1 Ph
- Individual open drains
- Individual thermostat controls and indicator lights
- Master switch and chrome knob guards
- Insulated bottom

### EXTERIOR HOUSING:

- Heavy gauge paint grip steel on one side and both ends
- Heavy gauge stainless steel on operator's side

### SHORT FORM SPECIFICATIONS:

**Duke Slide-Ins - Hot Food - Electric - Sealed Wells.** Top rim to be constructed of heavy gauge, 300 Series stainless steel with 15/16" overhang on back and ends, with operator's side turned down. Rim to be reinforced with heavy gauge steel angle and provided with vinyl foam gasket as sealant with top surface. Top to have die-stamped openings, each measuring 12-1/16" x 20-1/16" (front to back). Heat compartments to be die-formed, 6-1/4" deep, of stainless steel and insulated on all four sides. Each compartment to have 750 watts @ 120 volts, 900 watts @ 108 volts or 1200 watts @ 240 volts electric element fitted under warming compartment, above insulated bottom. Unit to be wired to operate on voltage as specified, with single phase standard for hard wired in field only. Three phase available. Thermostat controls. Exterior to be of heavy gauge steel on one side and both ends. Operator's side to be heavy gauge stainless steel.



**SLIDE-INS - HOT FOOD**

**ELECTRIC - SEALED WELLS**

- **ASI-1E-SW** 18-1/4"L x 23-1/2"W x 12-3/4"H
- **ASI-2E-SW** 32-1/4"L x 23-1/2"W x 12-3/4"H
- **ASI-3E-SW** 46-1/4"L x 23-1/2"W x 12-3/4"H
- **ASI-4E-SW** 60-1/4"L x 23-1/2"W x 12-3/4"H
- **ASI-5E-SW** 74-1/4"L x 23-1/2"W x 12-3/4"H
- **ASI-6E-SW** 88-1/4"L x 23-1/2"W x 12-3/4"H

LEGEND
▲ - ELECTRICAL CONNECTION
● - DRAIN LOCATION

**DIMENSIONS:**

Freight Class: 100

Model	Length		Width		Height		Top Openings	Cutout Length		Cutout Width		Cube ft. crated	Weight	
	in.	cm	in.	cm	in.	cm		in.	cm	in.	cm		lbs.	kg
ASI-1E-SW	18-1/4	46.4	23-1/2	59.7	12-3/4	32.4	1	17	43.2	23	58.4	8.0	43	19.6
ASI-2E-SW	32-1/4	81.9	23-1/2	59.7	12-3/4	32.4	2	31	78.7	23	58.4	12.6	75	34.1
ASI-3E-SW	46-1/4	117.5	23-1/2	59.7	12-3/4	32.4	3	45	114.3	23	58.4	17.3	90	40.9
ASI-4E-SW	60-1/4	153.0	23-1/2	59.7	12-3/4	32.4	4	59	149.9	23	58.4	21.9	115	52.3
ASI-5E-SW	74-1/4	188.6	23-1/2	59.7	12-3/4	32.4	5	73	185.4	23	58.4	26.5	140	63.6
ASI-6E-SW	88-1/4	224.2	23-1/2	59.7	12-3/4	32.4	6	87	221.0	23	58.4	31.3	220	100.0

**ELECTRICAL SPECIFICATIONS:** (Consult factory for 3-phase electrical requirements and other options.)

Model	120 Volt/750 Watt		208 Volt/900 Watt		240 Volt/1200 Watt	
	watts	amps	watts	amps	watts	amps
ASI-1E-SW	750	6.3	900	4.4	1200	5.0
ASI-2E-SW	1500	12.5	1800	8.7	2400	10.0
ASI-3E-SW	2250	18.8	2700	13.0	3600	15.0
ASI-4E-SW	3000	25.0	3600	17.3	4800	20.0
ASI-5E-SW	3750	31.3	4500	21.6	6000	25.0
ASI-6E-SW	n/a	n/a	5400	26.0	7200	30.0



**DUKE MANUFACTURING CO.**  
2305 N. Broadway  
St. Louis, MO 63102

800.735.3853 Toll Free  
314.231.1130 In Missouri  
314.231.5074 Fax  
www.dukemfg.com

**"Your Solutions Partner"**