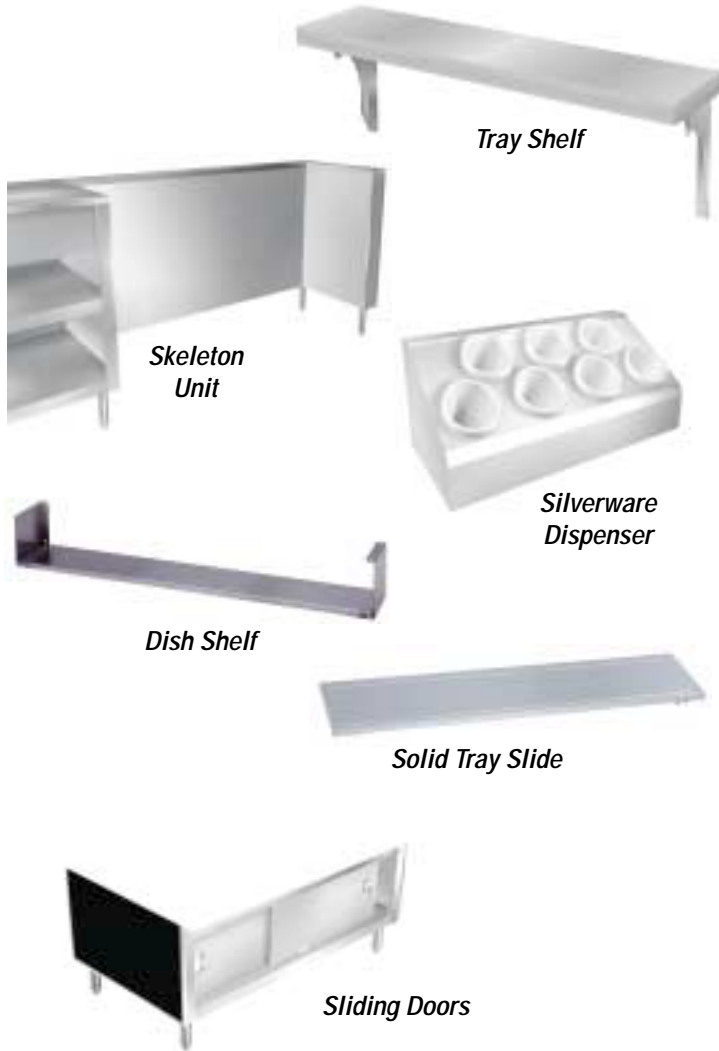




"Your Solutions Partner"

Specifications

F.O.B. Sedalia, Missouri 65301



Approval Stamp(s):

PROJECT INFORMATION:

PROJECT: _____
ITEM: _____
QUANTITY: _____

MODEL:

AeroServ Serving Systems Accessories

- 442-x W or S** Carving/Tray Shelves - 7"W
- 445-x W or S** Carving/Tray Shelves - 10"W
- 380-25/381-25** Skeleton Units/End Returns
- 73 & 71** Silverware Dispensers
- 322-25** Silverware Shelf
- 441-x-S** Dish Shelves
- 328-x/329-x** Sliding Doors
- SOLID-FX/HD** Solid Tray Slide

CARVING/TRAY SHELVES:

- 1" thick hardwood or 18 gauge stainless steel
- Mounted on stainless steel brackets

SKELETON UNITS:

- Heavy gauge paint-grip or stainless steel
- Finish to match other units
- Available on legs only

SILVERWARE SHELF: not shown

- Heavy gauge, 300 Series stainless steel - 12" x 24-1/2"
- Mounted on stainless steel fixed brackets

SILVERWARE DISPENSER:

- 18 gauge stainless steel
- Die-formed with 18 gauge stainless ends
- 3-1/2" diameter cup of formed plastic with perforated bottom

DISH SHELVES:

- 25", 39", 53" or 67" lengths
- 18 gauge stainless steel with stainless brackets
- Positioned above control knobs on hot food tables

SLIDING DOORS:

- Double-wall, paint-grip or stainless steel
- Ball-bearing wheels on overhead tracks
- Lift out for easy cleaning
- Recessed handles

SOLID TRAY SLIDES:

- 32", 46", 60", 74" lengths
- 16 gauge stainless steel, stainless steel brackets
- (2) 1/8" high embossed rubbing tracks

AGENCY LISTING:



DUKE MANUFACTURING CO.
2305 N. Broadway
St. Louis, MO 63102

800.735.3853 Toll Free
314.231.1130 In Missouri
314.231.5074 Fax
www.dukemfg.com



AEROSERV SERVING SYSTEMS

ACCESSORIES

- 442-x W or S** Carving/Tray Shelves - 7"W
- 445-x W or S** Carving/Tray Shelves - 10"W
- 380-25/381-25** Skeleton Units/End Returns
- 73 & 71** Silverware Dispensers
- 322-25** Silverware Shelf
- 441-x-S** Dish Shelves
- 328-x/329-x** Sliding Doors
- SOLID-FX/HD** Solid Tray Slide

DIMENSIONS:

Carving/Tray Shelves - 10"

Model		Shelf Length		Shelf Width		Brackets Provided	Weight			
							Hardwood		Stainless	
Hardwood	Stainless	in.	cm	in.	cm		lbs.	kg	lbs.	kg
445-2W	445-2S	32	81.3	10	25.4	2	13	5.9	11	5.0
445-3W	445-3S	46	116.8	10	25.4	2	18	8.2	14	6.4
445-4W	445-4S	60	152.4	10	25.4	2	22	10.0	17	7.7
445-5W	445-5S	74	188.0	10	25.4	3	27	12.3	22	10.0

Carving Board - 7"

Model		Shelf Length		Shelf Width		Brackets Provided	Weight			
							Hardwood		Stainless	
Hardwood	Stainless	in.	cm	in.	cm		lbs.	kg	lbs.	kg
442-2W	442-2S	32	81.3	7	17.8	2	10	4.6	8	3.6
442-3W	442-3S	46	116.8	7	17.8	2	12	5.5	11	5.0
442-4W	442-4S	60	152.4	7	17.8	2	14	6.4	14	6.4
442-5W	442-5S	74	188.0	7	17.8	3	18	8.2	17	7.7

Dish Shelves

Model	Shelf Length		Shelf Width		Shelf Weight	
	in.	cm	in.	cm	lbs.	kg
441-2S	25	63.5	7	17.8	8	3.6
441-3S	39	99.1	7	17.8	11	5.0
441-4S	53	134.6	7	17.8	13	5.9
441-5S	67	170.2	7	17.8	15	6.8

Sliding Doors - for Hot Food Units

Sliding Doors - for Solid Top, Cold Pan and Urn Stand Units

Model	Length		Door Height		Weight		Model	Length		Door Height		Weight	
	in.	cm	in.	cm	lbs.	kg		in.	cm	in.	cm	lbs.	kg
328-3	46	116.8	12	30.5	40	18.2	329-3	46	116.8	17	43.2	45	20.5
328-4	60	152.4	12	30.5	50	22.7	329-4	60	152.4	17	43.2	55	25.0
328-5	74	188.0	12	30.5	60	27.3	329-5	74	188.0	17	43.2	65	29.6

Silverware Shelves (Model 322-25) Dispensers (Models 73 & 71)

Model Shelf	Length		Model Dispenser	Length		Dispenser Width		Dispenser Height		No. Cups
	in.	cm		in.	cm	in.	cm	in.	cm	
322-25	12	30.5	73	16-3/8	41.6	9-3/4	24.8	7-1/4	18.4	5
			71	21-5/8	55.0	9-3/4	24.8	7-1/4	18.4	7

Skeleton Units

Model	Description
380-25	Front panel: 36" high, 12 lbs per foot w/3-bar tray slide
381-25	End panel: 24-1/2" wide, 36" high, 20 lbs. w/6" legs



DUKE MANUFACTURING CO.
 2305 N. Broadway
 St. Louis, MO 63102

800.735.3853 Toll Free
 314.231.1130 In Missouri
 314.231.5074 Fax
 www.dukemfg.com

"Your Solutions Partner"