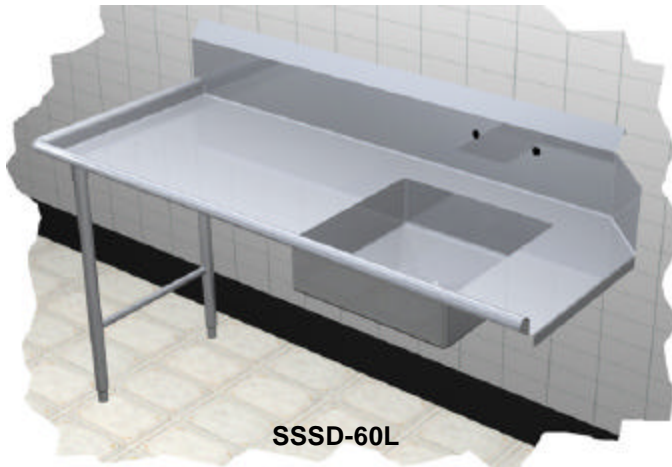


# Duke Specifications



"Your Solutions Partner"

F.O.B. St. Louis, Missouri 63102



SSSD-60L

#### STANDARD MODIFICATIONS:

- 12" x 15" disposer control bracket with VB holes in splash - **SK-6**
- Installation of disposer collar - collar by others - **SK-15**
- Flanged feet - **SK-19**
- Stainless steel welded leg assembly (H-frame) - **SK-32**  
(One standard - units 120" to have 2)
- Scrap block installed - **SK-34**
- Stainless steel sink cover - **SK-35**
- Stainless steel perforated basket with rack slide - **SK-57**
- Stainless steel welded lengthwise crossrail - **SK-58**
- Stainless steel rack slide - **SK-59**
- 5" x 7" disposer switch bracket with VB holes in splash - **SK-60**
  
- 18 gauge stainless steel removable undershelf
  - DTUDSS-18**
  - DTUDSS-24**
  - DTUDSS-30**
  - DTUDSS-42**
- DTUDSS-54**
- DTUDSS-66**
- DTUDSS-78**

#### SPECIAL MODIFICATIONS:

Special modifications may be added. Consult Accessories and Modification specification sheet.

#### AGENCY LISTING:



**DUKE MANUFACTURING CO.**  
2305 N. Broadway  
St. Louis, MO 63102

800.735.3853 Toll Free  
314.231.1130 In Missouri  
314.231.5074 Fax  
www.dukemfg.com

#### PROJECT INFORMATION:

PROJECT: \_\_\_\_\_  
ITEM: \_\_\_\_\_  
QUANTITY: \_\_\_\_\_

#### MODEL:

Duke Dishtables  
Straight-Soil

	<u>Supreme / 14 ga.</u>	<u>Deluxe / 16 ga.</u>	<u>Length</u>
<input type="checkbox"/>	<b>SSSD-36 L or R</b>	<input type="checkbox"/> <b>DSSD-36 L or R</b>	36" length unit
<input type="checkbox"/>	<b>SSSD-48 L or R</b>	<input type="checkbox"/> <b>DSSD-48 L or R</b>	48" length unit
<input type="checkbox"/>	<b>SSSD-60 L or R</b>	<input type="checkbox"/> <b>DSSD-60 L or R</b>	60" length unit
<input type="checkbox"/>	<b>SSSD-72 L or R</b>	<input type="checkbox"/> <b>DSSD-72 L or R</b>	72" length unit
<input type="checkbox"/>	<b>SSSD-96 L or R</b>	<input type="checkbox"/> <b>DSSD-96 L or R</b>	96" length unit
<input type="checkbox"/>	<b>SSSD-120 L or R</b>	<input type="checkbox"/> <b>DSSD-120 L or R</b>	120" length unit

L - Left side of dishwasher / R - Right side of dishwasher

#### Supreme Straight-Soil Dishtable

##### TOP:

- 14 gauge, 300 Series stainless steel
- 1-1/4" rolled rim - 2-1/2" high on front and side
- 10" rear splash - turned up 8", returned to wall
- 2" high on 45° angle with 1" turn down

##### BOWL:

- 14 gauge, 300 Series stainless steel
- 20-1/2" x 20-1/2" x 5" deep

##### UNDERBRACING:

- 12 gauge angle on 24" centers

##### LEGS:

- 16 gauge stainless steel - 1-5/8" OD tubing
- Stainless steel gusset
- 1" adjustable stainless steel bullet feet

##### CROSSRAILS:

- 16 gauge stainless steel - 1-1/4" OD tubing
- Welded to legs

#### Deluxe Straight-Soil Dishtable

##### TOP:

- 16 gauge, 300 Series stainless steel
- 1-1/4" rolled rim - 2-1/2" high on front and side
- 10" rear splash - turned up 8", returned to wall
- 2" high on 45° angle with 1" turn down

##### BOWL:

- 16 gauge, 300 Series stainless steel
- 20-1/2" x 20-1/2" x 5" deep

##### UNDERBRACING:

- 12 gauge angle on 24" centers

##### LEGS:

- 16 gauge stainless steel - 1-5/8" OD tubing
- Stainless steel gusset
- 1" adjustable stainless steel bullet feet

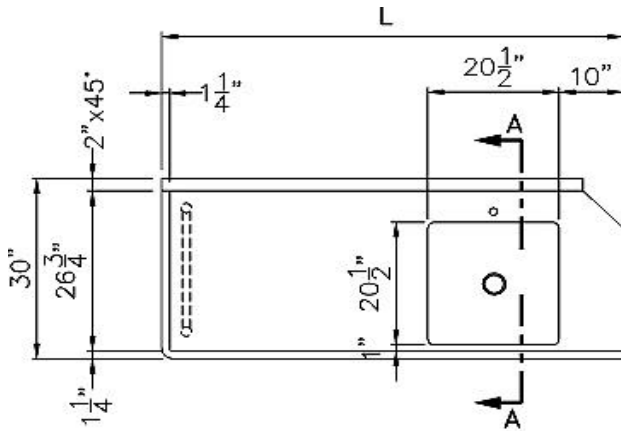
##### CROSSRAILS:

- 16 gauge stainless steel - 1-1/4" OD tubing
- Welded to legs

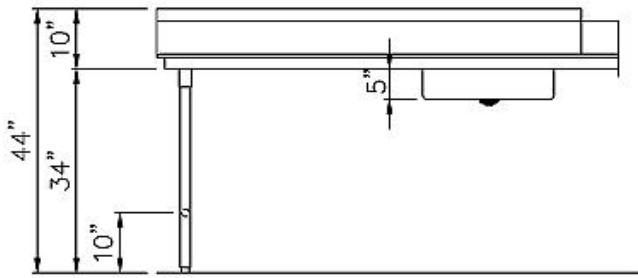
# Aerohot®

**DUKE DISHTABLES  
STRAIGHT - SOIL**

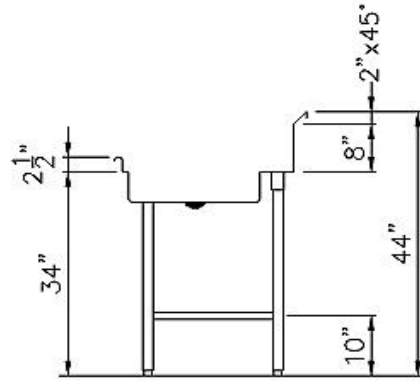
- | Supreme/14 ga.           |                 | Deluxe 16 ga.            |                 | Length           |
|--------------------------|-----------------|--------------------------|-----------------|------------------|
| <input type="checkbox"/> | SSSD-36 L or R  | <input type="checkbox"/> | DSSD-36 L or R  | 36" length unit  |
| <input type="checkbox"/> | SSSD-48 L or R  | <input type="checkbox"/> | DSSD-48 L or R  | 48" length unit  |
| <input type="checkbox"/> | SSSD-60 L or R  | <input type="checkbox"/> | DSSD-60 L or R  | 60" length unit  |
| <input type="checkbox"/> | SSSD-72 L or R  | <input type="checkbox"/> | DSSD-72 L or R  | 72" length unit  |
| <input type="checkbox"/> | SSSD-96 L or R  | <input type="checkbox"/> | DSSD-96 L or R  | 96" length unit  |
| <input type="checkbox"/> | SSSD-120 L or R | <input type="checkbox"/> | DSSD-120 L or R | 120" length unit |
- L - Left side of dishwasher / R - Right side of dishwasher



TOP VIEW



FRONT VIEW



SECTION A-A

**DIMENSIONS:**

Freight Class: 85

Model	Length		Width		Height		Cube ft. crated	Weight	
	in.	cm	in.	cm	in.	cm		lbs.	kg
SSSD-36 L or R DSSD-36 L or R	36	91.4	30	76.2	34	86.4	34.7	70	31.8
SSSD-48 L or R DSSD-48 L or R	48	121.9	30	76.2	34	86.4	44.6	85	38.6
SSSD-60 L or R DSSD-60 L or R	60	152.4	30	76.2	34	86.4	54.6	100	45.5
SSSD-72 L or R DSSD-72 L or R	72	182.9	30	76.2	34	86.4	64.5	115	52.3
SSSD-96 L or R DSSD-96 L or R	96	243.8	30	76.2	34	86.4	84.3	135	61.4
SSSD-120 L or R DSSD-120 L or R	120	304.8	30	76.2	34	86.4	104.1	185	84.1



"Your Solutions Partner"

**DUKE MANUFACTURING CO.**  
2305 N. Broadway  
St. Louis, MO 63102

800.735.3853 Toll Free  
314.231.1130 In Missouri  
314.231.5074 Fax  
[www.dukemfg.com](http://www.dukemfg.com)