



Profit from the Eagle Advantage®

Specification Sheet

Short Form Specifications

Eagle Spec-Bar® Combination Cocktail Station; model _____. Heavy gauge type 304 stainless steel body, legs, leg channels and cross rails. Models offered with (12" or 18") recessed workboard with 1½" drain and stainless steel removable perforated insert, or with (12" or 18") tiered liquor display with ABS for sound deadening—#CCS-72 has both. (36" or 42") combination foamed-in-place insulated ice chest with bottle holders. Two ¾" x 2½" tubing access holes in top of backsplash. Dry waste chute. Condiment dispenser. 12" single wet waste sink with T&S faucet and perforated plastic lift out strainer. Stainless steel blender shelf with towel ring and rear cord access hole. Stainless steel double speed rail with ABS for sound deadening, and stainless steel adjustable bullet feet.



combination cocktail station

Options / Accessories

- 8-circuit post-mix cold plate
- 10-circuit post-mix cold plate

EAGLE GROUP
100 Industrial Boulevard, Clayton, DE 19938-8903 USA
Phone: 302-653-3000 • Fax: 302-653-2065
www.eaglegrp.com

Foodservice Division: Phone 800-441-8440
MHC/Retail Display Divisions: Phone 800-637-5100

For custom configuration or fabrication needs, contact our **SpecFAB® Division**.
Phone: 302-653-3000 • Fax: 302-653-3091 • e-mail: specfab@eaglegrp.com

Spec sheets available for viewing, printing or downloading from our online literature library at www.eaglegrp.com

Eagle Foodservice Equipment, Eagle MHC, SpecFAB®, and Retail Display are divisions of Eagle Group. ©2011 by the Eagle Group

Item No.:	_____
Project No.:	_____
S.I.S. No.:	_____

Spec-Bar® Combination Cocktail Stations

MODELS:

- | | | |
|-----------------------------------|-----------------------------------|-----------------------------------|
| <input type="checkbox"/> CCS-60-1 | <input type="checkbox"/> CCS-66-2 | <input type="checkbox"/> CCS-72 |
| <input type="checkbox"/> CCS-60-2 | <input type="checkbox"/> CCS-66-3 | <input type="checkbox"/> CCS-72-1 |
| <input type="checkbox"/> CCS-66-1 | <input type="checkbox"/> CCS-66-4 | <input type="checkbox"/> CCS-72-2 |

Design and Construction Features

- Back, backsplash, sides, bottom, front panel, liquor steps, ice chests and bowls are 20 gauge stainless steel.
- Blender shelf is 18 gauge stainless steel.
- Blender shelf sides, speed rail sides, and liquor display sides are 14 gauge stainless steel.
- Legs are constructed of 1½" (41mm) diameter 16 gauge type 304 stainless steel with stainless steel bullet feet.
- Leg channels are 16 gauge stainless steel.
- Blender station, wet waste sink, double speed rail, dry waste chute, condiment dispenser, and combination ice chest are standard.
- Ice chest drain is 1½" (38mm) NPS, with 4" (102mm) long tailpiece.
- 12" (305mm) wet waste and workboard drains are 1½" (38mm) I.P.S. threaded drain with nut and washer.
- Liquor display or recessed workboard available.*
- Tubing access holes are ¾" x 2½" (22 x 73mm). Capacity per hole is 12 lines of ¼" x ¾" (6 x 10mm) O.D. nylon braided tubing.
- T&S faucets are mounted on 4" (102mm) centers, and accept ½" NPT sink leads. Hot and cold water connections required.
- Sink bowl dimensions are 11½" x 9¼" x 6" (292 x 235 x 152mm) deep.
- Sink strainer is perforated plastic.

* Model #CCS-72 includes both liquor display and recessed workboard.

Certifications / Approvals



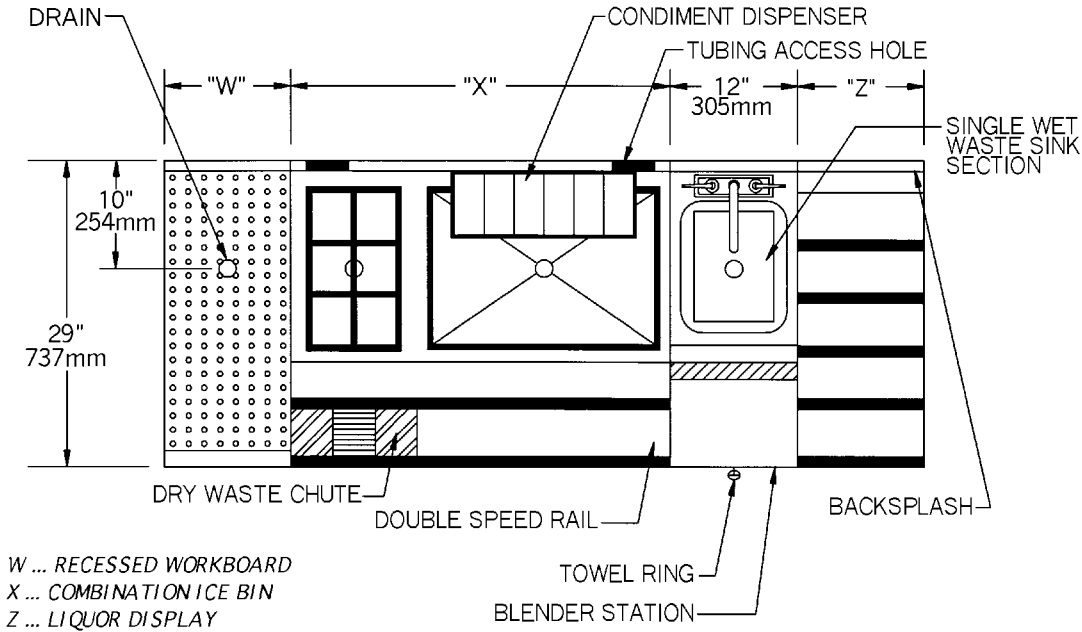
AUTOQUOTES





Item No.: _____
 Project No.: _____
 S.I.S. No.: _____

Spec-Bar® Combination Cocktail Stations



model #	comes with	overall dimensions		combination ice bin length		weight			
		in.	mm	in.	mm	lbs.	kg		
CCS-60-1	12" (305mm)-long liquor display	29"	737	60"	1524	36"	914	191	86.6
CCS-60-2	12" (305mm)-long recessed workboard	29"	737	60"	1524	36"	914	191	86.6
CCS-66-1	12" (305mm)-long liquor display	29"	737	66"	1676	42"	1067	211	95.7
CCS-66-2	12" (305mm)-long recessed workboard	29"	737	66"	1676	42"	1067	221	100.2
CCS-66-3	18" (457mm)-long recessed workboard	29"	737	66"	1676	36"	914	211	95.7
CCS-66-4	18" (457mm)-long liquor display	29"	737	66"	1676	36"	914	211	95.7
CCS-72	12" (305mm)-long recessed workboard and 12" (305mm)-long liquor display	29"	737	72"	1829	36"	914	223	101.2
CCS-72-1	18" (457mm)-long liquor display	29"	737	72"	1829	42"	1067	221	95.7
CCS-72-2	18" (457mm)-long recessed workboard	29"	737	72"	1829	42"	1067	231	104.8

EAGLE GROUP
 100 Industrial Boulevard, Clayton, DE 19938-8903 USA
 Phone: 302-653-3000 • Fax: 302-653-2065
 www.eaglegrp.com

Foodservice Division: Phone 800-441-8440
 MHC/Retail Display Divisions: Phone 800-637-5100

Printed in U.S.A.
 ©2011 by Eagle Group
 Rev. 04/11

Spec sheets available for viewing, printing or downloading from our online literature library at www.eaglegrp.com

Although every attempt has been made to ensure the accuracy of the information provided, we cannot be held responsible for typographical or printing errors. Information and specifications are subject to change without notice. Please confirm at time of order.