



Profit from the Eagle Advantage®

# Specification Sheet

## Short Form Specifications

Eagle Spec-Bar® Filler Board, model \_\_\_\_\_. Heavy gauge type 304 stainless steel body, legs, leg channels and cross rails. Top reinforced with heavy gauge support channels. Stainless steel adjustable bullet feet.



## Options / Accessories

- Speed rail

Item No.:	_____
Project No.:	_____
S.I.S. No.:	_____

## Spec-Bar® Filler Boards

### MODELS:

- |   |   |
|---|---|
| <input type="checkbox"/> <b>FB6-19</b>  | <input type="checkbox"/> <b>FB6-24</b>  |
| <input type="checkbox"/> <b>FB12-19</b> | <input type="checkbox"/> <b>FB12-24</b> |
| <input type="checkbox"/> <b>FB18-19</b> | <input type="checkbox"/> <b>FB18-24</b> |
| <input type="checkbox"/> <b>FB24-19</b> | <input type="checkbox"/> <b>FB24-24</b> |
| <input type="checkbox"/> <b>FB30-19</b> | <input type="checkbox"/> <b>FB30-24</b> |
| <input type="checkbox"/> <b>FB36-19</b> | <input type="checkbox"/> <b>FB36-24</b> |
| <input type="checkbox"/> <b>FB42-19</b> | <input type="checkbox"/> <b>FB42-24</b> |
| <input type="checkbox"/> <b>FB48-19</b> | <input type="checkbox"/> <b>FB48-24</b> |
| <input type="checkbox"/> <b>FB60-19</b> | <input type="checkbox"/> <b>FB60-24</b> |

### Design and Construction Features

- Backsplash, sides, front panel, and work surface 20 gauge type 304 stainless steel.
- Leg channels, legs and crossbracing are 16 gauge type 304 stainless steel.
- Legs are 1½" (41 mm) diameter, with stainless steel adjustable bullet feet.
- Work surface reinforced with two-layer subsurface.

**EAGLE GROUP**  
 100 Industrial Boulevard, Clayton, DE 19938-8903 USA  
 Phone: 302-653-3000 • Fax: 302-653-2065  
 www.eaglegrp.com

**Foodservice Division: Phone 800-441-8440**  
**MHC/Retail Display Divisions: Phone 800-637-5100**

For custom configuration or fabrication needs, contact our **SpecFAB® Division**.  
 Phone: 302-653-3000 • Fax: 302-653-3091 • e-mail: specfab@eaglegrp.com



**AUTOQUOTES**



EG40.29 Rev. 04/11

**Spec sheets available for viewing, printing or downloading from our online literature library at [www.eaglegrp.com](http://www.eaglegrp.com)**

*Eagle Foodservice Equipment, Eagle MHC, SpecFAB®, and Retail Display are divisions of Eagle Group. ©2011 by the Eagle Group*

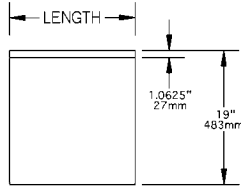


Profit from the Eagle Advantage®

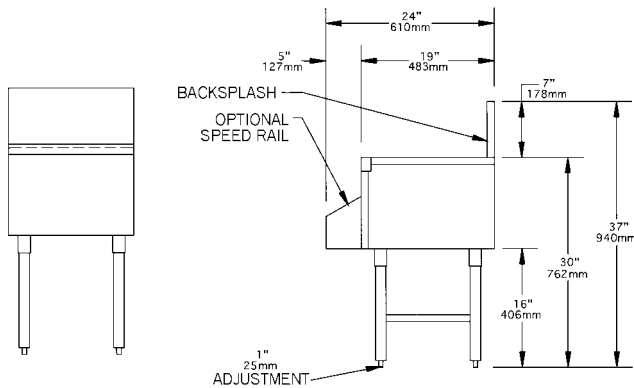
Item No.: \_\_\_\_\_  
 Project No.: \_\_\_\_\_  
 S.I.S. No.: \_\_\_\_\_

## Spec-Bar® Filler Boards

### 19" (483mm)-wide Filler Boards



TOP VIEW

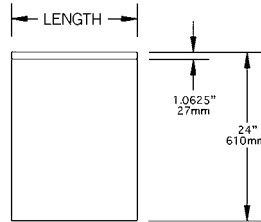


FRONT VIEW

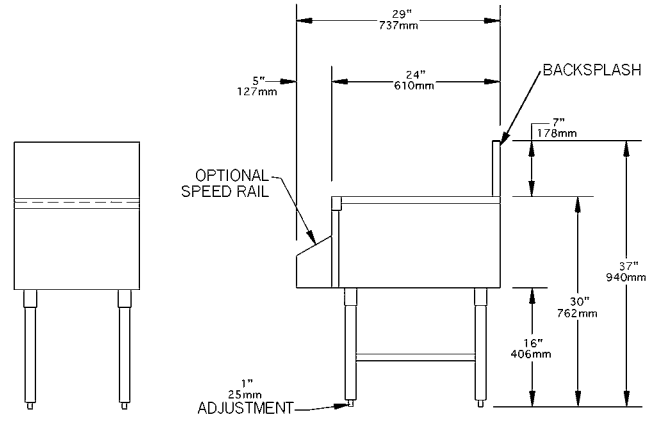
SIDE VIEW

model #	length		weight	
	in.	mm	lbs.	kg
FB6-19	6"	152	18	8.2
FB12-19	12"	305	22	10.0
FB18-19	18"	457	26	11.8
FB24-19	24"	610	30	13.6
FB30-19	30"	762	34	15.4
FB36-19	36"	914	37	16.8
FB42-19	42"	1067	41	18.6
FB48-19	48"	1219	45	20.4
FB60-19	60"	1524	49	22.2

### 24" (610mm)-wide Filler Boards



TOP VIEW



FRONT VIEW

SIDE VIEW

model #	length		weight	
	in.	mm	lbs.	kg
FB6-24	6"	152	19	8.6
FB12-24	12"	305	23	10.4
FB18-24	18"	457	27	12.2
FB24-24	24"	610	30	13.6
FB30-24	30"	762	35	15.9
FB36-24	36"	914	39	17.7
FB42-24	42"	1067	43	19.5
FB48-24	48"	1219	47	21.3
FB60-24	60"	1524	51	23.1

**EAGLE GROUP**  
 100 Industrial Boulevard, Clayton, DE 19938-8903 USA  
 Phone: 302-653-3000 • Fax: 302-653-2065  
 www.eaglegrp.com

Foodservice Division: Phone 800-441-8440  
 MHC/Retail Display Divisions: Phone 800-637-5100

Printed in U.S.A.  
 ©2011 by Eagle Group

Rev. 04/11

Spec sheets available for viewing, printing or downloading from our online literature library at [www.eaglegrp.com](http://www.eaglegrp.com)

Although every attempt has been made to ensure the accuracy of the information provided, we cannot be held responsible for typographical or printing errors. Information and specifications are subject to change without notice. Please confirm at time of order.