



Profit from the Eagle Advantage®

# Specification Sheet

## Short Form Specifications

Eagle Spec-Master® SFN Series Sink, model \_\_\_\_\_. Sink bowls, drainboards, and backsplash constructed of 14/304 stainless steel. Sinks bowls have 5/8" radius interior corners, and 14" water level. Drainboards, when required, are integrally welded. Faucet holes punched on 8" centers. Unit furnished with 1 1/2" IPS basket-type drains. 1 1/2" O.D. tubular stainless steel legs, with stainless steel gussets, stainless steel crossbracing, and adjustable stainless steel bullet feet.



two compartment sink



three compartment sink with single drainboard

### Options / Accessories

- Lever waste
- Lever waste with overflow
- Faucets
- Polyboard sink covers
- Stainless steel sink covers
- Twist brackets
- Twist brackets with overflow

**EAGLE GROUP**  
100 Industrial Boulevard, Clayton, DE 19938-8903 USA  
Phone: 302-653-3000 • Fax: 302-653-2065  
www.eaglegrp.com

**Foodservice Division: Phone 800-441-8440**  
**MHC/Retail Display Divisions: Phone 800-637-5100**

For custom configuration or fabrication needs, contact our **SpecFAB® Division**.  
Phone: 302-653-3000 • Fax: 302-653-3091 • e-mail: specfab@eaglegrp.com

**Spec sheets available for viewing, printing or downloading from our online literature library at [www.eaglegrp.com](http://www.eaglegrp.com)**

Eagle Foodservice Equipment, Eagle MHC, SpecFAB®, and Retail Display are divisions of Eagle Group. ©2009 by the Eagle Group

Item No.:	_____
Project No.:	_____
S.I.S. No.:	_____

## Spec-Master® SFN Series Sinks

### MODELS:

- SFN2832-2-14/3
- SFN2832-2-18L-14/3
- SFN2832-2-18R-14/3
- SFN2832-2-18-14/3
- SFN3052-3-14/3
- SFN3052-3-18L-14/3
- SFN3052-3-18R-14/3
- SFN3052-3-18-14/3
- SFN3242-3-14/3
- SFN3242-3-18L-14/3
- SFN3242-3-18R-14/3
- SFN3242-3-18-14/3

### Top

- Drainboards, backsplash and rolled rims are 14 gauge type 304 stainless steel.
- Drainboards, when provided, are integrally welded.
- All rolled edges are high-lighted for enhanced appearance.
- Faucet holes are 1 1/2" (29mm) punched on 8" (203mm) centers.

### Base

- Legs: 1 1/2" (41mm)-diameter stainless steel tubing with stainless steel gussets and fully adjustable stainless steel bullet feet.
- Leg locations fall directly under sink bowls, providing increased stability and maximum weight support.
- Leg gussets welded to a die-cut heavy-gauge stainless steel reinforcing corner plate.
- Legs are crossbraced front-to-back.

### Bowls

- Sink compartments are covered on a full 5/8" (41mm) radius and constructed using state-of-the-art seamless welding techniques.
- 14 gauge type 430 stainless steel.
- 14" (356mm) water level, 17" (432mm) flood level.
- Basket-type waste drains are 1 1/2" (38mm) IPS and included.

### Design & Construction Features

- Entire assembly is fuse-welded and planished, providing a one-piece seamless sink unit.
- Welded areas are high-speed belt blended to match adjacent surfaces with continuity of satin finish.
- All outside corners of assembly are bull-nosed to provide safe, clean edges.
- Water supply is 1/2" (13mm) IPS for hot and cold lines.

### Certifications / Approvals

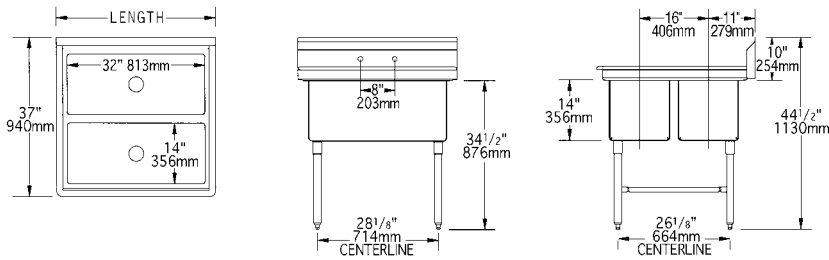




Profit from the Eagle Advantage®

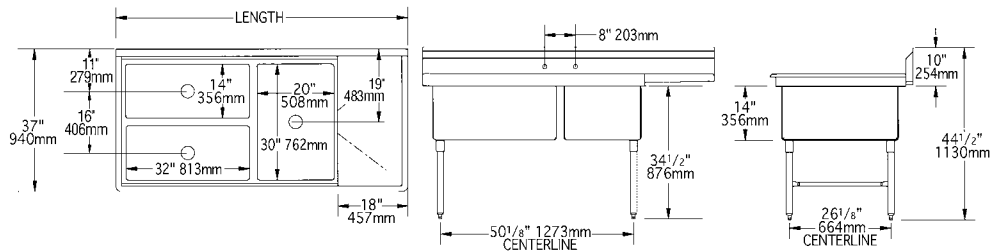
Item No.: \_\_\_\_\_  
 Project No.: \_\_\_\_\_  
 S.I.S. No.: \_\_\_\_\_

**Sinks with Two Compartments** — Two 14" x 32" (356 x 813mm) bowls.



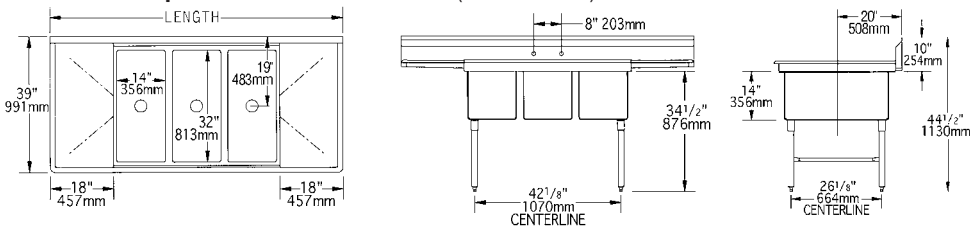
model #	quantity	location	DRAINBOARD length		OVERALL DIMENSIONS width		OVERALL DIMENSIONS length		weight	
			in.	mm	in.	mm	in.	mm	lbs.	kg
SFN2832-2-14/3	0	-	-	-	37"	902	37"	902	155	70.3
SFN2832-2-18L-14/3	1	left end	18"	457	37"	902	53½"	1359	175	79.3
SFN2832-2-18R-14/3	1	right end	18"	457	37"	902	53½"	1359	175	79.3
SFN2832-2-18-14/3	2	both ends	18"	457	37"	902	70½"	1791	200	90.7

**Sinks with Three Compartments** — Two 14" x 32" (356 x 813mm) bowls and one 20" x 30" (508 x 762mm) bowl.



model #	quantity	location	DRAINBOARD length		OVERALL DIMENSIONS width		OVERALL DIMENSIONS length		weight	
			in.	mm	in.	mm	in.	mm	lbs.	kg
SFN3052-3-14/3	0	-	-	-	37"	902	59"	1499	164	74.4
SFN3052-3-18L-14/3	1	left end	18"	457	37"	902	75½"	1918	192	87.1
SFN3052-3-18R-14/3	1	right end	18"	457	37"	902	75½"	1918	192	87.1
SFN3052-3-18-14/3	2	both ends	18"	457	37"	902	92"	2337	210	95.3

**Sinks with Three Compartments** — Three 32" x 14" (813 x 356mm) bowls.



model #	quantity	location	DRAINBOARD length		OVERALL DIMENSIONS width		OVERALL DIMENSIONS length		weight	
			in.	mm	in.	mm	in.	mm	lbs.	kg
SFN3242-3-14/3	0	-	-	-	39"	991	51"	1265	160	72.6
SFN3242-3-18L-14/3	1	left end	18"	457	39"	991	67½"	1715	175	79.4
SFN3242-3-18R-14/3	1	right end	18"	457	39"	991	67½"	1715	175	79.4
SFN3242-3-18-14/3	2	both ends	18"	457	39"	991	84"	2134	200	90.7

**EAGLE GROUP**  
 100 Industrial Boulevard, Clayton, DE 19938-8903 USA  
 Phone: 302-653-3000 • Fax: 302-653-2065  
 www.eaglegrp.com

Foodservice Division: Phone 800-441-8440  
 MHC/Retail Display Divisions: Phone 800-637-5100

Printed in U.S.A.  
 ©2009 by Eagle Group  
 Rev. 06/09

Spec sheets available for viewing, printing or downloading from our online literature library at [www.eaglegrp.com](http://www.eaglegrp.com)

Although every attempt has been made to ensure the accuracy of the information provided, we cannot be held responsible for typographical or printing errors. Information and specifications are subject to change without notice. Please confirm at time of order.