



EM Series
40 LB (23 LT) SINGLE WELL GAS FRYER

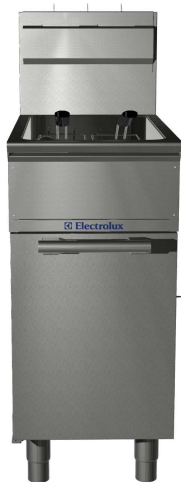
ITEM # _____

MODEL # _____

PROJECT NAME # _____

SIS # _____

AIA# _____



EM Series

40 LB (23 LT) SINGLE WELL GAS FRYER

169010

40 LB (23 LT) SINGLE WELL GAS FRYER

Short Form Specification

Item No. _____

Unit to be Electrolux 40 lb (23 lt) Single Well Gas Fryer. Unit to have two high efficiency burners outside the well for a total power of 85,000 BTU (25 kW). Suitable for natural gas or propane gas. Unit to have deep drawn V-Shaped well. Interior of well with rounded corners for ease of cleaning. Oil drains through a tap positioned under the well. All major components can be accessed from the front of the appliance for ease of maintenance. Worktop in AISI 304 Stainless Steel. Front and side panels in Stainless Steel with Scotch Brite finish. Right-angled side edges to allow flush fitting between units. Supplied with 6" (150 mm) height adjustable legs. 100% safety pilot.

Main Features

- Unit to be Electrolux 40 lb (23 lt) Single Well Gas Fryer.
- Unit to have two high efficiency burners outside the well for a total power of 85,000 BTU (25 kW).
- Suitable for natural gas or propane gas.
- Unit to have deep drawn V-Shaped well.
- Interior of well with rounded corners for ease of cleaning.
- Oil drains through a tap positioned under the well.
- All major components can be accessed from the front of the appliance for ease of maintenance.
- Worktop in AISI 304 Stainless Steel.
- Front and side panels in Stainless Steel with Scotch Brite finish.
- Right-angled side edges to allow flush fitting between units.
- Supplied with 6" (150 mm) height adjustable legs.
- 100% safety pilot.



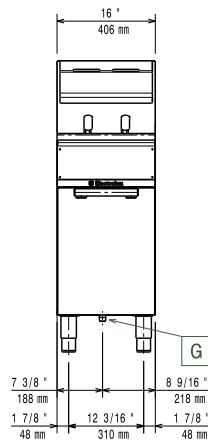
Approval: _____

Electrolux Professional
www.electroluxusa.com/professional
www.electrolux.com/foodservice
foodservice@electrolux.com

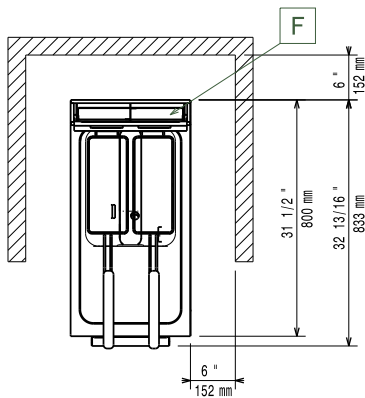


EM Series
40 LB (23 LT) SINGLE WELL GAS FRYER

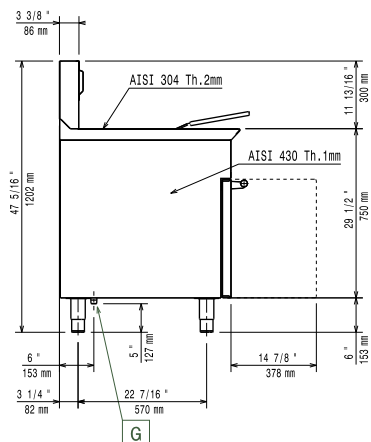
Front



Top



Side



Gas

Gas Power:

169010 85000 Btu/hr (25 kW)

Gas Inlet:

3/4" NPT

Natural Gas Pressure:

4" w.c. (10 mbar)

Propane Gas Pressure:

7" w.c. (18 mbar)

Key Information

External dimensions, Width	16" (406 mm)
External dimensions, Depth	31 1/2" (800 mm)
External dimensions, Height	47 5/16" (1202 mm)