



**CABINET BASE WORK TABLE
(FLAT TOP AND
BACKSPLASH DESIGN)
(ENCLOSED WITH DOORS)**



FEATURES:

TOP: 16 GAUGE 304 STAINLESS STEEL WITH GALVANIZED UNDERSTRUCTURE

BACKSPLASH: 4" TALL FROM THE DECK WITH A 1" RETURN TO THE WALL

FLAT TOP: 1-3/4" TURN-DOWN ON ALL FOUR SIDES

BODY & SHELVES: 18 GAUGE 304 STAINLESS STEEL CONSTRUCTION

LEGS: 6" STAINLESS STEEL LEGS WITH ADJUSTABLE FEET

DOORS: DOUBLE PAN 304 STAINLESS STEEL CONSTRUCTION WITH RECESSED DOOR HANDLES. DOORS ARE SUSPENDED WITH OVER-HEAD TRACK AND BALLBEARING ROLLERS.

STANDARD SIZES (in.)

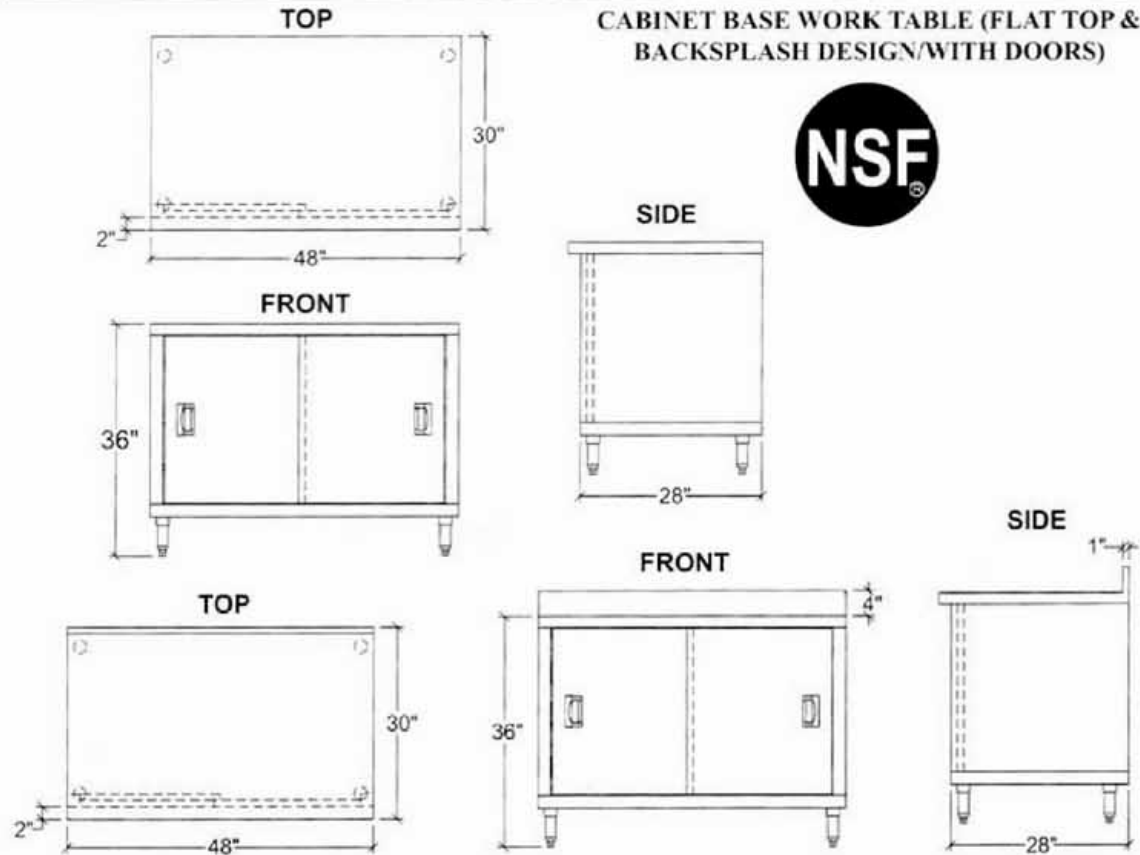
WIDTH	STD MODELS	BD MODELS	LENGTH	HEIGHT
24	CAB24S48-STD	CAB24S48-BD	48	36
	CAB24S60-STD	CAB24S60-BD	60	
	CAB24S72-STD	CAB24S72-BD	72	
	CAB24S84-STD	CAB24S84-BD	84	
	CAB24S96-STD	CAB24S96-BD	96	
	CAB24S108-STD	CAB24S108-BD	108	
	CAB24S120-STD	CAB24S120-BD	120	
30	CAB30S48-STD	CAB30S48-BD	48	
	CAB30S60-STD	CAB30S60-BD	60	
	CAB30S72-STD	CAB30S72-BD	72	
	CAB30S84-STD	CAB30S84-BD	84	
	CAB30S96-STD	CAB30S96-BD	96	
	CAB30S108-STD	CAB30S108-BD	108	
	CAB30S120-STD	CAB30S120-BD	120	

SPECIFICATIONS

DATE: _____ MODEL NO: _____

PROJECT: _____

CABINET BASE WORK TABLE (FLAT TOP & BACKSPLASH DESIGN/WITH DOORS)



DIMENSIONS (in.)

WIDTH	STD MODELS	LENGTH	APPROX. WEIGHT
24	CAB24S48-STD	48	260
	CAB24S60-STD	60	320
	CAB24S72-STD	72	380
	CAB24S84-STD	84	445
	CAB24S96-STD	96	515
	CAB24S108-STD	108	575
	CAB24S120-STD	120	620
30	CAB30S48-STD	48	280
	CAB30S60-STD	60	340
	CAB30S72-STD	72	430
	CAB30S84-STD	84	490
	CAB30S96-STD	96	550
	CAB30S108-STD	108	610
	CAB30S120-STD	120	670

DIMENSIONS (in.)

WIDTH	BD MODELS	LENGTH	APPROX. WEIGHT
24	CAB24S48-BD	48	260
	CAB24S60-BD	60	320
	CAB24S72-BD	72	380
	CAB24S84-BD	84	445
	CAB24S96-BD	96	515
	CAB24S108-BD	108	575
	CAB24S120-BD	120	620
30	CAB30S48-BD	48	280
	CAB30S60-BD	60	340
	CAB30S72-BD	72	430
	CAB30S84-BD	84	490
	CAB30S96-BD	96	550
	CAB30S108-BD	108	610
	CAB30S120-BD	120	670

(Specifications Subject To Change)



North 421 Freys, Spokane, WA 99202 509-533-0808 / 800-726-0553 Fax: 509-535-1493 Website: <http://www.sspinc.net> E-mail: ssp@sspinc.net