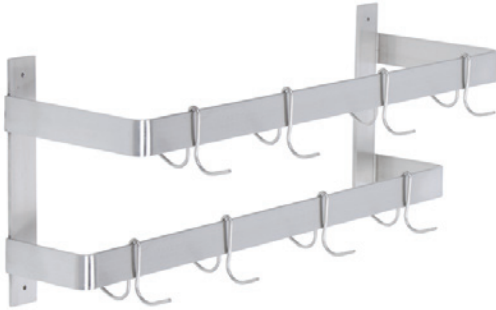


Item No.:	_____	Qty.:	_____
Model No.:	_____		
Project No.:	_____		

Standard Series Pot Rack

Standard Double Line Wall Mount Pot Rack



- DLW-84
- DLW-96
- DLW-108
- DLW-120

Features

- 18 Gauge, 300 series stainless steel
- Includes 2 stainless steel pot hooks per foot
- Welded construction for consistent metal gauge thickness throughout
- Does not include mounting hardware

Options

- Pot Hook Upgrades
- Additional Pot Hooks

Materials

- **Shelf:** 18 Gauge, 300 series stainless steel
- **Hooks:** stainless steel



AUTOQUOTES



In keeping with our policy of continuing product improvement, Elkay SSP reserves the right to change product specifications without notice.

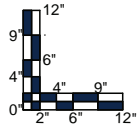
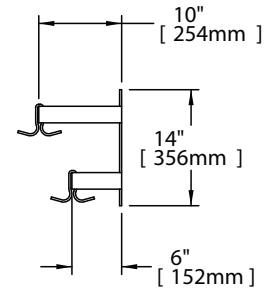
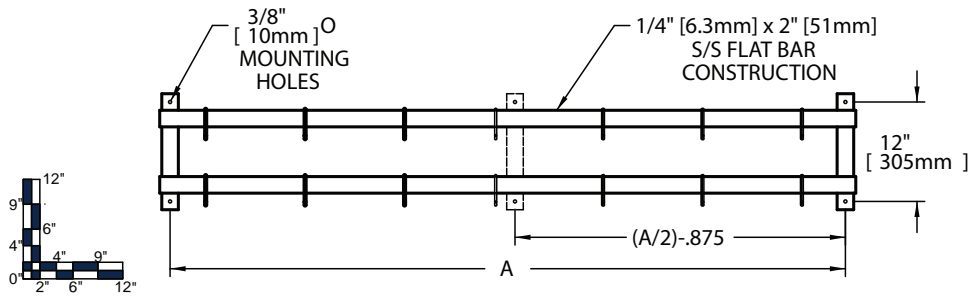
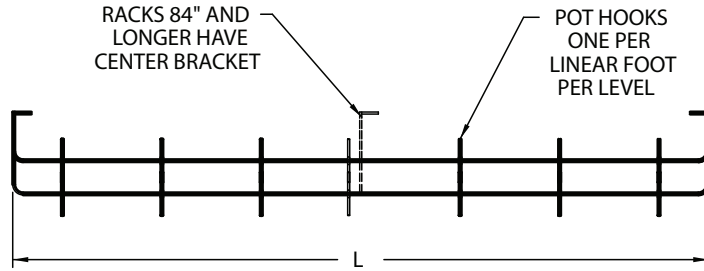
This specification describes an Elkay SSP product with design, quality and functional benefits to the user. When making a comparison of other producers' offerings, be certain these features are not overlooked.

Elkay SSP
 421 N. Freya St.
 Spokane, WA 99205
 Phone: 800-726-0553 Fax: 509-535-1493

Website: www.sspinc.net
 Email: sspsales@elkay.com
 ©2011 Elkay



Item No.: _____ Qty.: _____
 Model No.: _____
 Project No.: _____



Pot Rack							
Model	Overall Length		Overall Width		Weight		Pot Hooks
	L		W		lbs.	kg	
	in.	mm	in.	mm			
DLW - 84	84	2134	6	152	38	17	7
DLW - 96	96	2438	6	152	46	21	8
DLW - 108	108	2743	6	152	54	25	9
DLW - 120	120	3048	6	152	62	28	10

