

Item No.:	_____	Qty.:	_____
Model No.:	_____		
Project No.:	_____		



Economy Series Hand Sink

Economy 18" Hand Sink, Wall Mounted, Both Side Splashes

EHS-18SSX

Features

- 18 Gauge, 300 series stainless steel
- 6" Backsplash with 2" return
- Goose neck faucet
- Both left and right side splashes
- 1-1/2" Drain opening
- Strainer included
- Z-clip mounting bracket
- Easy to clean and sanitize

Options

- Faucet Upgrade
- Apron Skirt
- P-Trap
- Overflow

Materials

- Sink & Bowl: 18 gauge, 300 series stainless steel
- Top: Backsplash is 18 gauge, 300 series stainless steel

Mechanical

- 1-1/8" (29mm) faucet holes on 4" (102mm) centers
- 1-1/2" (38mm) waste drain opening

Flyer Product

In keeping with our policy of continuing product improvement, Elkay SSP reserves the right to change product specifications without notice.



AUTOQUOTES



This specification describes an Elkay SSP product with design, quality and functional benefits to the user. When making a comparison of other producers' offerings, be certain these features are not overlooked.

Elkay SSP
421 N. Freya St.
Spokane, WA 99205
Phone: 800-726-0553 Fax: 509-535-1493

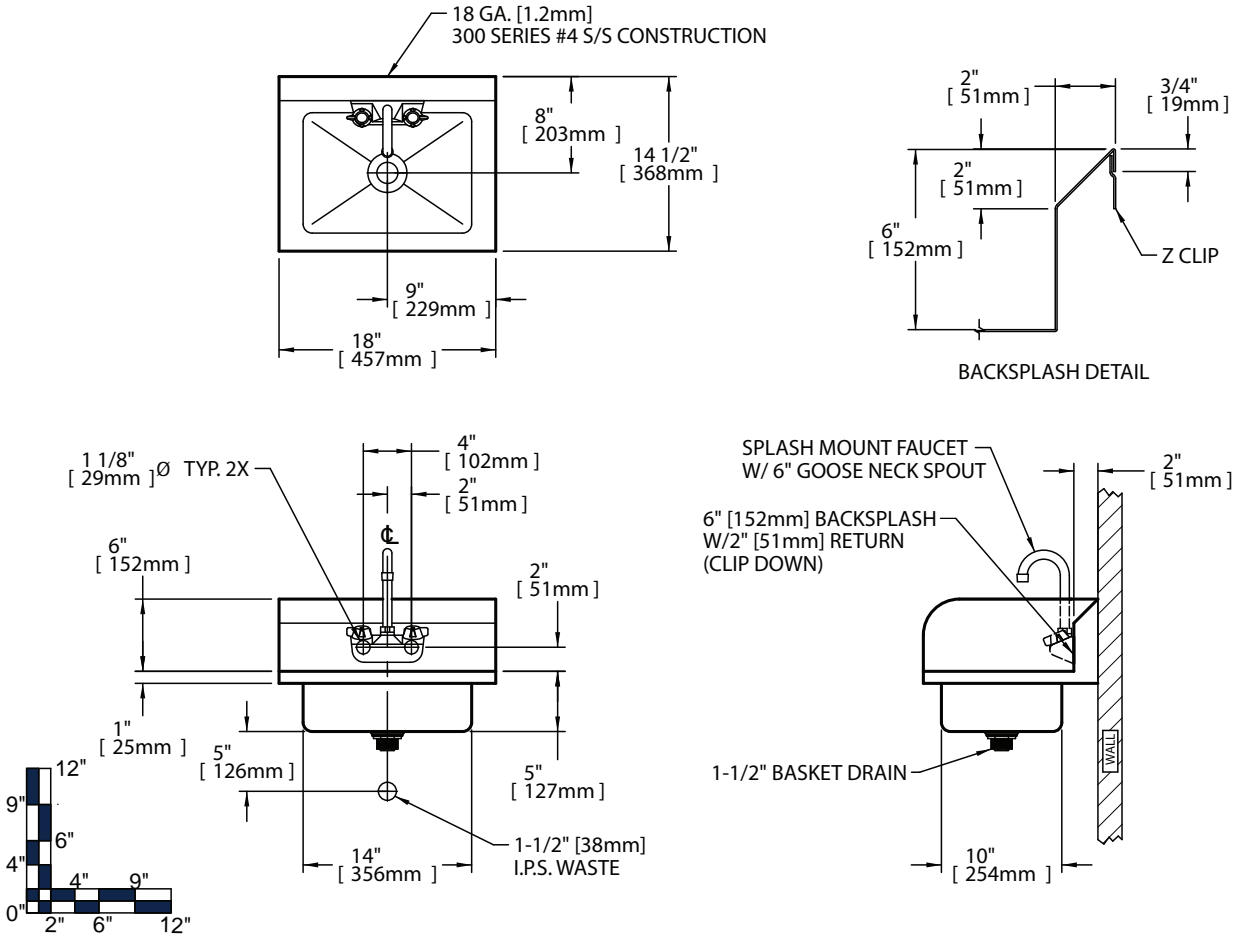
Website: www.sspinc.net
Email: sspsales@elkay.com
©2011 Elkay

SNK-EHS18SSX10OCT2011

Page 1 of 2



Item No.: _____ Qty.: _____
 Model No.: _____
 Project No.: _____



Economy Hand Sinks																
	Bowl Dimensions						Overall Size				Drain Location		Weight			
	Width		Front-to-Back		Depth		Width		Front-to-Back		Height		DL			
	A	B	C	D	E	F	G	H	I	J	K	L	M	N		
	in.	mm	in.	mm	in.	mm	in.	mm	in.	mm	in.	mm	in.	mm	lbs.	kg
EHS - 18 - SS X	10	254	14	356	5	127	14	356	18	457	11	279	10.0	254	16	7

* Custom sizes also available

