

Item No.:	_____	Qty.:	_____
Model No.:	_____		
Project No.:	_____		

Super Economy Series Hand Sink

Super Economy 17" Hand Sink, Wall Mounted



SEHS-17X

Features

- 20 Gauge, 300 series stainless steel
- 6" Backsplash with 2" return
- Goose neck faucet included
- 1-1/2" Drain opening
- Strainer and faucet included
- Z-clip mounting bracket
- Easy to clean and sanitize

Options

- Side Splashes
- Faucet Upgrade
- Apron Skirt
- P-Trap
- Overflow

Materials

- Sink & Bowl: 20 gauge, 300 series stainless steel
- Top: Backsplash is 20 gauge, 300 series stainless steel

Mechanical

- 1-1/8" (29mm) faucet holes on 4" (102mm) centers
- 1-1/2" (38mm) waste drain opening

Flyer Product



AUTOQUOTES



In keeping with our policy of continuing product improvement, Elkay SSP reserves the right to change product specifications without notice.

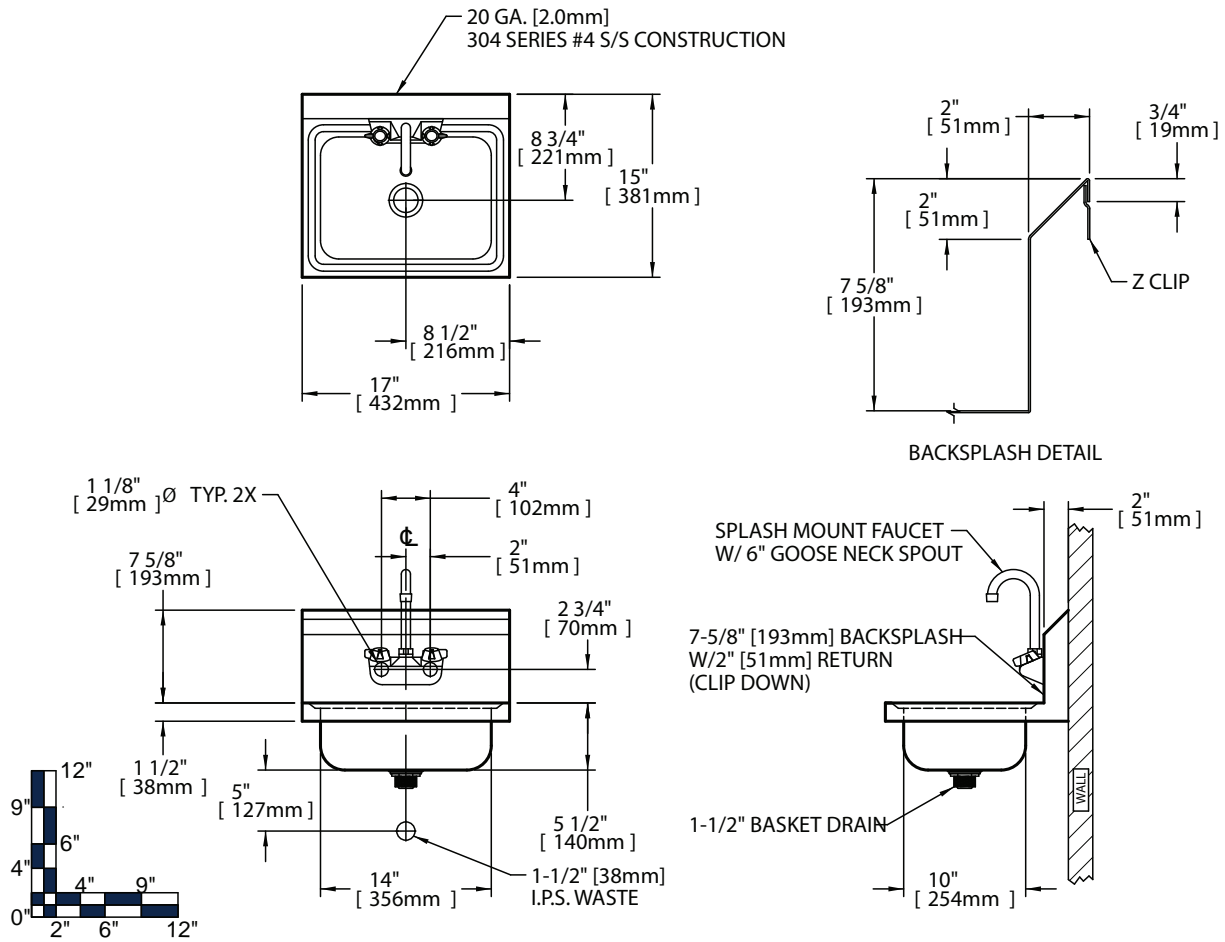
This specification describes an Elkay SSP product with design, quality and functional benefits to the user. When making a comparison of other producers' offerings, be certain these features are not overlooked.

Elkay SSP
421 N. Freya St.
Spokane, WA 99205
Phone: 800-726-0553 Fax: 509-535-1493

Website: www.sspinc.net
Email: sspsales@elkay.com
©2011 Elkay



Item No.: _____ Qty.: _____
 Model No.: _____
 Project No.: _____



Economy Hand Sinks																
	Bowl Dimensions						Overall Size				Drain Location		Weight			
	Width		Front-to-Back		Depth		Width		Front-to-Back		Height		DL		lbs.	kg
	A	mm	B	mm	D	mm	L	mm	W	mm	H	mm	DL	mm		
SEHS - 17 - X	14	356	10	254	5	127	17	432	15	381	11.0	279	8.5	216	11	5

* Custom sizes also available

