

Item No.:	_____	Qty.:	_____
Model No.:	_____		
Project No.:	_____		

Standard Series Wall Mounted Shelf

Standard Wall Mounted Shelf with Pot Rack



- SLW-S-36
- SLW-S-84
- SLW-S-96
- SLW-S-108
- SLW-S-120

Features

- 18 Gauge, 300 series stainless steel
- Turned down on front & sides, turned up 1-1/2" at rear
- Includes stainless steel wall brackets and 1 stainless steel pot hook per foot
- Welded construction for consistent metal gauge thickness throughout
- Does not include mounting hardware
- Shipped knocked down for reduced shipping costs

Materials

- **Shelf:** 18 Gauge, 300 series stainless steel
- **Brackets:** Stainless steel
- **Hooks:** Stainless steel

Options

- Bracket Upgrades / Modifications
- Edge Modifications
- Shelf Modifications
- Undershelves
- Additional Pot Hooks
- Pot Hook Upgrades



AUTOQUOTES



In keeping with our policy of continuing product improvement, Elkay SSP reserves the right to change product specifications without notice.

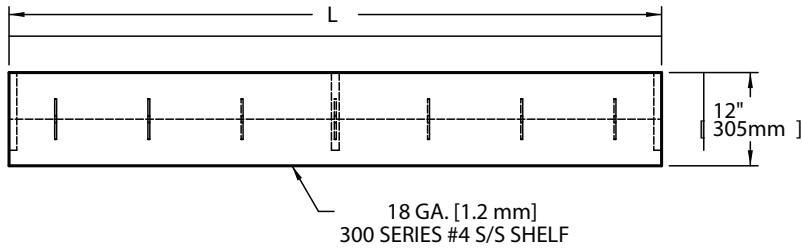
This specification describes an Elkay SSP product with design, quality and functional benefits to the user. When making a comparison of other producers' offerings, be certain these features are not overlooked.

Elkay SSP
421 N. Freya St.
Spokane, WA 99205
Phone: 800-726-0553 Fax: 509-535-1493

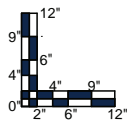
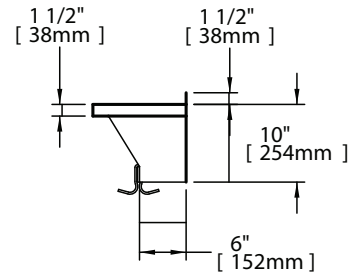
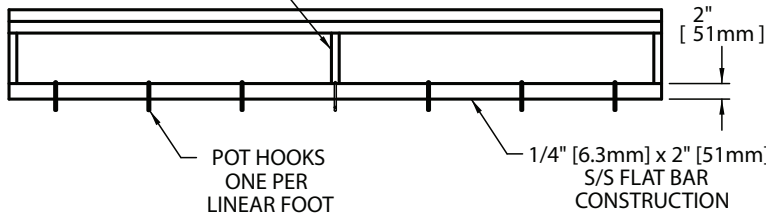
Website: www.sspinc.net
Email: sspsales@elkay.com
©2011 Elkay



Item No.: _____ Qty.: _____
 Model No.: _____
 Project No.: _____



RACKS 84" AND LONGER HAVE CENTER BRACKET



12" Shelf with Single Line Pot Rack							
Model Number	Overall Length L		Overall Width W		Pot Hooks	Weight	
	in.	mm	in.	mm		lbs.	kg
SLW - S - 36	36	914	12	305	4	48	22
SLW - S - 84	84	2134	12	305	5	105	48
SLW - S - 96	96	2438	12	305	6	117	53
SLW - S - 108	108	2743	12	305	7	140	64
SLW - S - 120	120	3048	12	305	8	153	69

* Custom sizes also available

