



# SOLID SLIDE LID GLASS & PLATE CHILLERS

## EGC – Series

• EGC37 • EGC50 • EGC65

### Cabinet Construction

Heavy duty stainless steel countertop, rail and lids, and textured and laminated black vinyl exterior. Galvanized steel interior. 1 3/4" thick high density foamed-in-place polyurethane insulation. Built in caster thread receptacles for all units.

### Refrigeration System

- Side mounted condensing unit
- Oversized condenser and evaporator coil cools to set and maintain temperature in minimum time period
- Forced-air cooling with oversized evaporator fan motors providing balanced airflow throughout cabinet to ensure faster frosting of dry glasses and plates
- Removable side panel and slide-out condensing unit for convenient repair and maintenance
- Environmentally friendly CFC free R-134A refrigerant
- Defrost heater controlled by electrical timer
- Copper tube and aluminum fin evaporator with anti-corrosive coating
- Energy efficient condensate drain pan assembly heated by high side copper tube
- Pre-wired and ready to plug, 115V/60Hz/1Ph, NEMA 5-15P

### Lids, Locks, Openers

- Heavy duty stainless steel, easy glide and removable lids
- 3/4" thick lids, foamed-in-place polyurethane insulation
- Ratchet lock to secure lids(standard)

### Shelving

- Two levels of epoxy coated wire shelves for glasses & plates

### Temperature Control

- Factory preset temperature, 0°F
- Temperature setting range from -10°F to 32°F
- Easy to set analog thermostat

### Option

- 2 1/2" and 4" diameter casters (3" and 5" overall height)



EGC37



EGC50



EGC65

<ul style="list-style-type: none"> <li>• Project / Customer _____</li> <li>• Item No. _____</li> <li>• Model No. _____</li> </ul>	<p><b>Warranty</b></p> <p>5 Year — Compressor Warranty 3 Year — Parts &amp; Labor Warranty Applicable to units purchased after July 1, 2014</p>	<p>Please visit our website for updated Energy Efficiency information</p> <p>201 W. Artesia Blvd, Compton, CA 90220 T. (310) 323-6586, (800) 444-6285 F. (310) 323-7524 <a href="http://www.EVERESTref.com">www.EVERESTref.com</a></p>
---	---	--

# SOLID SLIDE LID GLASS & PLATE CHILLERS

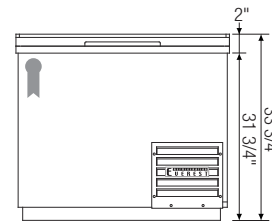
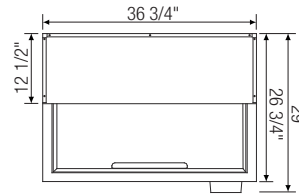
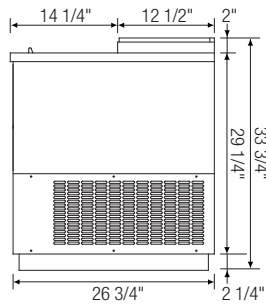


## EGC – Series

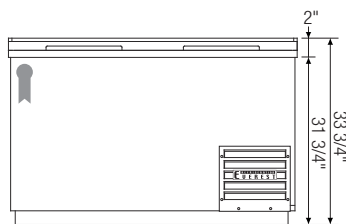
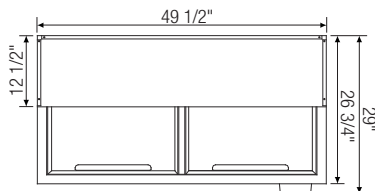
• EGC37 • EGC50 • EGC65

### Dimensions

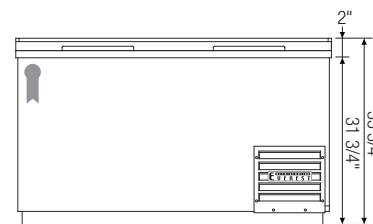
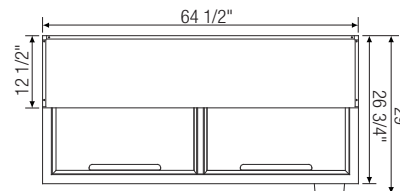
#### SIDE VIEW



▲ EGC37



▲ EGC50



▲ EGC65

Model	Ref/ Fzr/ Dual	# of Lids	Capacity (Cu.Ft.)	HP	Refrigerant	# of Shelves	Power (V-Hz-Ph)	Amps	Crated Weight (LBS)	Exterior Dimensions (Inches)			Ref = Refrigerator Fzr = Freezer Dual = Ref & Fzr Combo
										L	D	H	
EGC37	Fzr	1	9.30	1/3	R-134A	3	115-60-1	5.20	202	36 3/4	26 3/4	33 3/4	
EGC50	Fzr	2	13.60	1/3+	R-404A	5	115-60-1	5.20	246	49 1/2	26 3/4	33 3/4	
EGC65	Fzr	2	18.90	1/3+	R-404A	7	115-60-1	5.40	282	64 1/2	26 3/4	33 3/4	

**Disclaimer:** Product dimensions are for general purposes and not absolute value. Slight variations may exist. If dimensions are critical, please contact Everest.

Specifications subject to change without notice.

[www.EVERESTref.com](http://www.EVERESTref.com)

201 W. Artesia Blvd, Compton, CA 90220  
T. (310) 323-6586, (800) 444-6285 F. (310) 323-7524