

CHROMATOGRAPHY REFRIGERATORS

Swing Doors



EVEREST
REFRIGERATION

www.EVERESTref.com

EM – Series

• EMGR24 – C • EMSGR33 – C • EMSGR48 – C • EMSGR69 – C



EMGR24 – C



EMSGR33 – C



EMSGR48 – C



EMSGR69 – C

Cabinet Construction

Heavy duty white coated steel for cabinet interior and exterior. High quality stainless steel interior floor with round edges for convenient cleaning. White coated aluminum drain pan. 2.5" thick high density foamed-in-place polyurethane insulation. Adjustable screw legs for leveling. One additional heavy duty adjustable screw leg located at bottom of front cabinet for weight support for model EMSGR69-C.

Refrigeration System

- Bottom mounted condensing unit
- Removable bottom grill and slide-out condensing unit for easy repair and maintenance
- Oversized condenser and evaporator coils quickly achieve and maintain desired temperature
- Forced-air cooling with oversized evaporator fan motors providing balanced airflow throughout cabinet to ensure faster temperature drop
- Environmentally friendly CFC free R-134A refrigerant
- Air defrost controlled by thermostat
- Copper tube and aluminum fin evaporator with anti-corrosive coating
- Energy efficient condensate drain pan with wicking pads for self sufficient condensation removal
- Two electrical cords, pre-wired and ready to plug, 115V/60Hz/1Ph, NEMA 5-15P

Doors

- Black PVC door frames
- Low emissivity double pane glass system reflects UV rays and improves insulation for maximized energy efficiency
- Heavy duty adjustable torsion spring self-closing door system
- One piece snap-in magnetic door gaskets for easy replacement
- Heavy duty die-cast door handles

Lighting

- Shielded vertical LED interior lighting with on/off switch for energy saving, less heat generation and enhanced illumination (available from 2015 models)

Shelving

- Four epoxy coated wire shelves per section
- Stainless steel pilasters and shelf clips

Temperature Control

- Factory preset temperature, 35°F
- Temperature setting range from 32°F to 42°F
- Easy to set thermostat dial

Options

- 2 1/2" and 4" diameter casters (3 1/2" and 5" overall height)

Chromatography Features


- Access ports on sidewalls for running lines, probes and cords
- Water-proof, heavy duty receptacle cover with lockable tabs
- Interior duplex GFCI electrical outlet safely located at the back wall

• Project / Customer _____


• Item No. _____

• Model No. _____

Warranty

 **5 Year — Compressor Warranty**
3 Year — Parts & Labor Warranty
Applicable to units purchased after July 1, 2014.

Contact

 201 W. Artesia Blvd, Compton, CA 90220
T. (310) 323-6586, (800) 444-6285
F. (310) 323-7524, (310) 761-1127

CHROMATOGRAPHY REFRIGERATORS

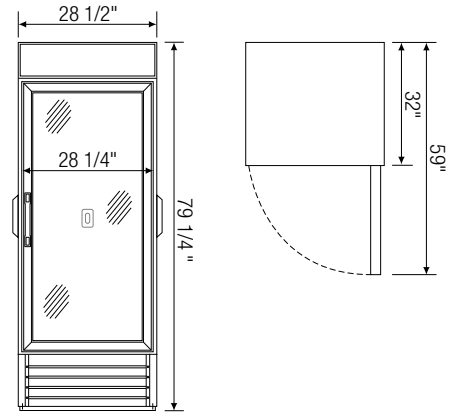
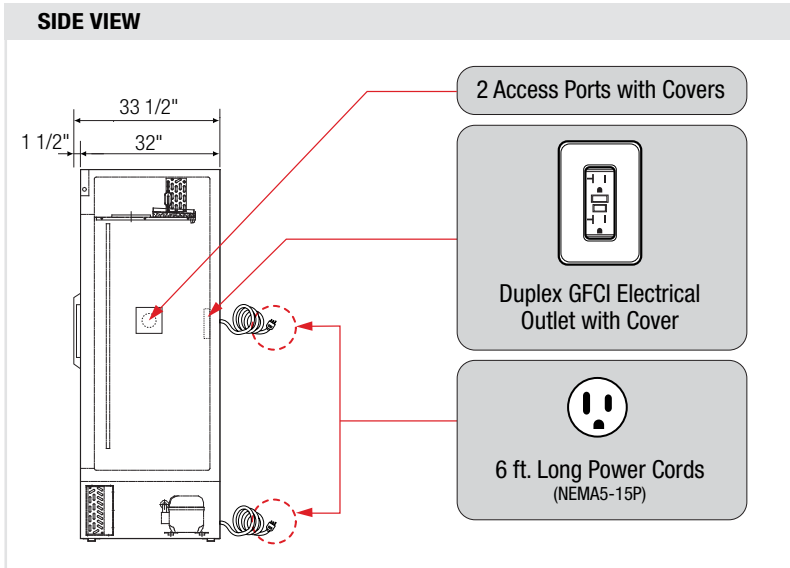
Swing Doors



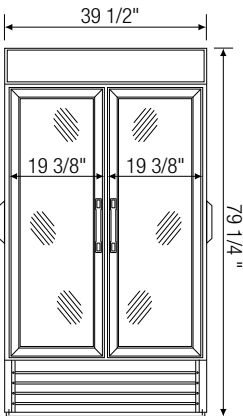
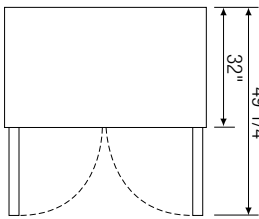
EM – Series

• EMGR24 – C • EMSGR33 – C • EMSGR48 – C • EMSGR69 – C

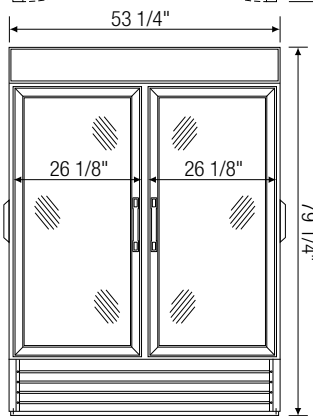
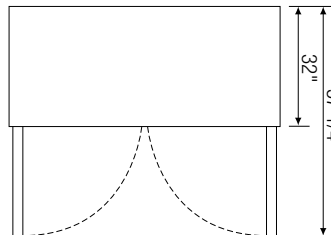
Dimensions



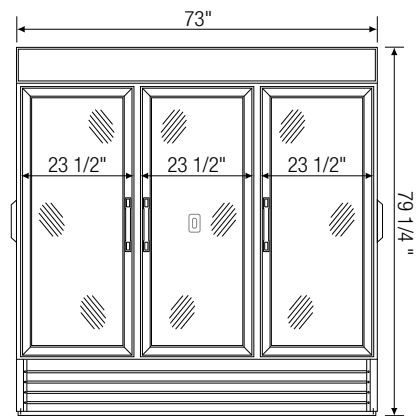
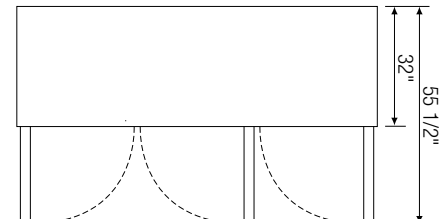
▲ EMGR24-C



▲ EMSGR33-C



▲ EMSGR48-C



▲ EMSGR69-C

Model	Ref/ Frz/ Dual	# of Doors	Capacity (Cu.Ft.)	HP	Refrigerant	# of Shelves	# of Duplex GFCI Outlets	Power (V-Hz-Ph)	Amps	Crated Weight (LBS)	Exterior Dimensions (Inches)			* Exterior depth of swing door units does not include 1 1/2" for door handles
											L †	D*	H	
EMGR24-C	Ref	1	24	1/3	R-134A	4	1	115-60-1	4.07	327	28 1/2	32	79 1/4	
EMSGR33-C	Ref	2	33	1/3	R-134A	8	1	115-60-1	4.16	414	39 1/2	32	79 1/4	
EMSGR48-C	Ref	2	48	1/2+	R-134A	8	1	115-60-1	9.00	533	53 1/4	32	79 1/4	
EMSGR69-C	Ref	3	69	3/4+	R-134A	12	1	115-60-1	11.00	698	73	32	79 1/4	

† Exterior length does not include protruding access ports
 Ref = Refrigerator
 Frz = Freezer
 Dual = Ref & Frz Combo

Disclaimer: Product dimensions are for general purposes and not absolute value. Slight variations may exist. If dimensions are critical, please contact Everest.