

Medical Grade Refrigerators

Undercounter

FHR Series

- FHR-5
- FHR-5G



Item # _____

Standard Features

- Medical grade undercounter refrigerator to provide secure and stable temperature storage required for patient floor, lab and pharmacy applications.
- All stainless steel interior and exterior construction for a cleaner & safer environment. Coved corner floor and field reversible door.
- Digital controller and display to maintain uniform cabinet temperatures with quick pulldown and rapid recovery on door openings. (°F or °C). Glycol temperature controlled for accurate box temperature reading.
- Factory balanced refrigeration system, environmentally friendly R-134A.
- Front breathing refrigeration system to fit standard 24" casework opening with no side clearances.
- Door locks are standard with optional installation of pyxis locks. Entry port for temperature recording.
- Slide out condensing unit for ease of serviceability and standard with hospital grade cord and plug.
- ADA compatible.



FHR-5

Options & Accessories

- Additional shelves
- Pyxis locks.
- 220 v / 50 cycles / 1 phase.



* Conforms to UL standards

ISO-9001

Refrigerator	Model	Door	Capacity (Cu.Ft) (litres)	Shelves	Amps	HP	Voltage	Cord Length	Cabinet Dimensions			Shipping	
									L	D	H	(lbs.)	(cu.m)
	FHR-5	1	4.5 (127 litres)	2	3.2	1/6	115/60/1	8' (2.439 mm)	25-1/2" (647.7 mm)	23-3/4" (603.25 mm)	31-1/4" (793.75 mm)	151 (68.5 kg)	14.3 (.40 m ³)
	FHR-5G	1	4.5 (127 litres)	2	3.2	1/6	115/60/1	8' (2.439 mm)	25-1/2" (647.7 mm)	23-3/4" (603.25 mm)	31-1/4" (793.75 mm)	160 (72.6 kg)	14.3 (.40 m ³)

Specifications FHR

Construction

Heavy duty stainless steel exterior top, front and sides. Galvanized back panel. Interior completely constructed of heavy duty stainless steel with coved corner floor. Door is heavy duty stainless steel exterior and interior, with stainless steel hinges and positive seal. (Field reversible) "G" Models have a glass door with aluminum frame.

Provided with magnetic door gaskets, removable without tools, self-closing and with 120° stay open feature. Recessed full length door handle. Door openings have a plastic breaker strips to retard condensate formation.

Unit comes complete with a 2" CFC-Free polyurethane insulation, foamed in place. Leveling feet. ADA compatible.

Refrigeration system

Self-contained capillary tube system using environmentally friendly (CFC Free) refrigerant. (R-134a) Glycol container for accurate box temperature reading. Front breathing for built-in applications. Evaporator coil is mounted to interior top panel encased in stainless steel. Large fan motor and fan blades for better air flow. Digital controllers and thermostats. Entry port for temperature recorder.

Shelving

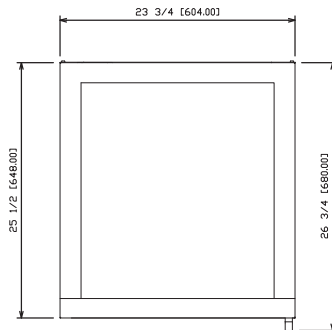
(2) Epoxy coated shelving per door with clips. Adjustable in 1/2" increments per shelf.

Others

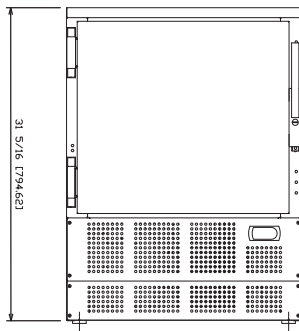
Unit is supplied standard with an 8' medical grade cord and plug.

Warranty

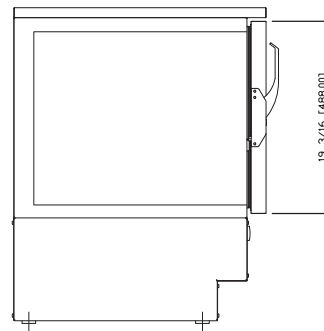
(24) month labor and parts warranty. 5 year compressor warranty (Continental U.S.A. & Canada only).



Top View



Front View



Common View

The manufacturer reserves the rights to modify materials and specifications without notice.

Printed in the USA • 06/12