



a Standex company

ITEM: \_\_\_\_\_ PROJECT NAME: \_\_\_\_\_ DATE: \_\_\_\_\_

## REFRIGERATED SELF-SERVE ISLAND MERCHANDISER

- MODEL**  **IMSS60SC-2**  
 **IMSS60SC-3**  
 **IMSS84SC-2**  
 **IMSS84SC-3**



*Designed with impulse sales in mind. Get maximum return and increased profits with shop-around merchandising.*

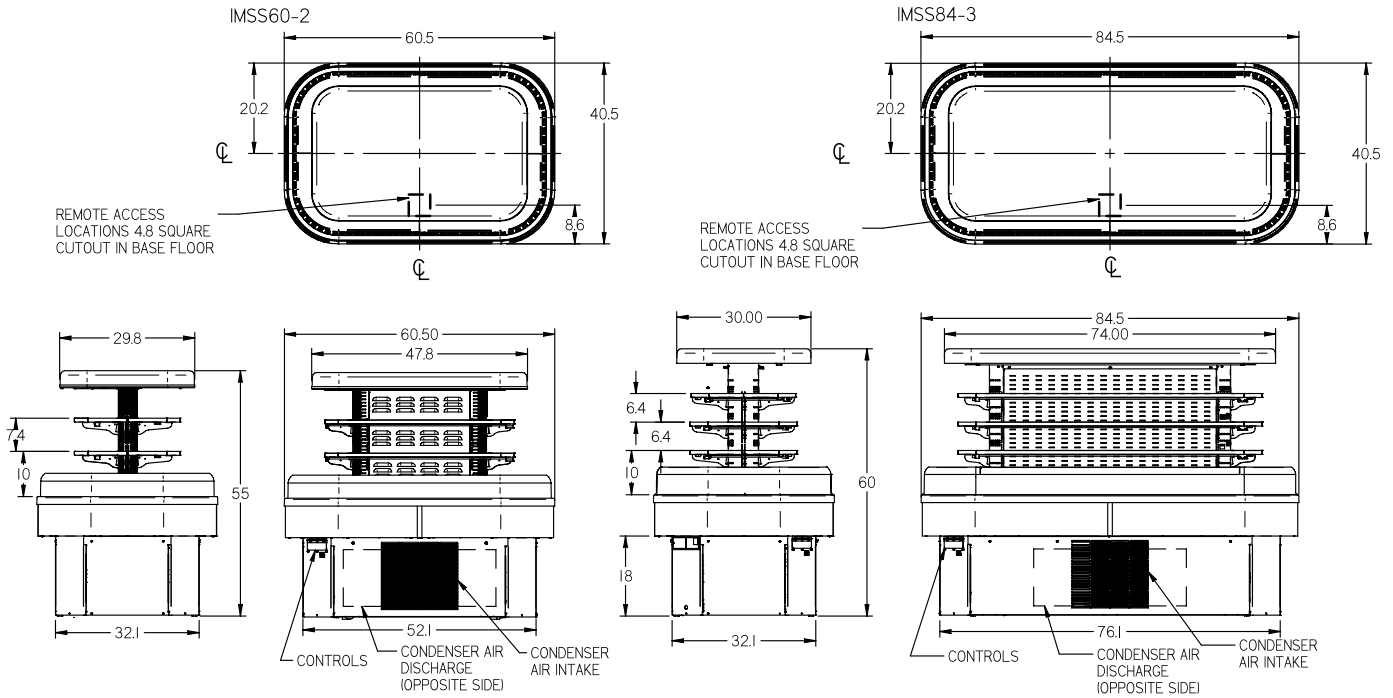
### STANDARD FEATURES

- Adjustable black metal shelves, two or three tiers.
- LED top and undershelf lighting.
- Black metal base, interior and canopy. Choice of six standard laminates on exterior. Other color laminates are optional.
- Curved air deflector.
- Condensate evaporator provided for a totally self-contained system.
- Easy clean, rustproof insulated evaporator coil compartment.
- Easily accessible light switch and temperature control.
- Adjustable feet.
- Refrigeration controls maintain 40° F. Note: Case temperature will vary if the air curtain is disrupted.
- R404 Refrigerant.
- Insulated with high-density foam.
- Thermometer.
- UL Safety and UL Sanitation Listed to NSF Standard No. 7.

# REFRIGERATED SELF-SERVE ISLAND MERCHANDISER

## OPTIONAL ACCESSORIES:

- Special Color Laminated Exterior Finish
- Recessed Casters or Legs
- Cord and Plug
- Remote Refrigeration
- Condensate Pump
- Cart Bumper
- Top-Mounted Electrical



## SPECIFICATIONS:

| Model                               | Dimensions<br>L W H | Shipping<br>Weight<br>(lbs) | Display Area<br>(square feet) | Self-Contained<br>with Condensate Pan<br>208-230/60/1 | Remote<br>with Condensate Pan<br>208-230/60/1 |
|-------------------------------------|---------------------|-----------------------------|-------------------------------|---|---|
| <input type="checkbox"/> IMSS60SC-2 | 60" x 40" x 55"     | 750                         | 2 Tiers - 24.0                | 1 1/2 HP • 20 AMPS                                    | 10 AMPS                                       |
| <input type="checkbox"/> IMSS60SC-3 | 60" x 40" x 60"     | 800                         | 3 Tiers - 31.3                | 1 1/2 HP • 20 AMPS                                    | 10 AMPS                                       |
| <input type="checkbox"/> IMSS84SC-2 | 84" x 40" x 55"     | 930                         | 2 Tiers - 31.7                | 1 1/2 HP • 20 AMPS                                    | 10 AMPS                                       |
| <input type="checkbox"/> IMSS84SC-3 | 84" x 40" x 60"     | 930                         | 3 Tiers - 41.4                | 1 1/2 HP • 20 AMPS                                    | 10 AMPS                                       |

- Case temperature will vary if the air curtain is disrupted.
- Refrigerated cases are designed to operate in a maximum environment of 75°F ambient and 55% relative humidity.
- Due to continuing engineering improvements, specifications are subject to change without notice.



*The Signature of Quality*

**FEDERAL INDUSTRIES**  
A Standex Company

215 FEDERAL AVENUE, BELLEVILLE, WISCONSIN 53508-9201

PHONE: 800-356-4206

EMAIL: geninfo@federalind.com

FAX: 608-424-3234

WEBSITE: www.federalind.com

