

APPLICATION:

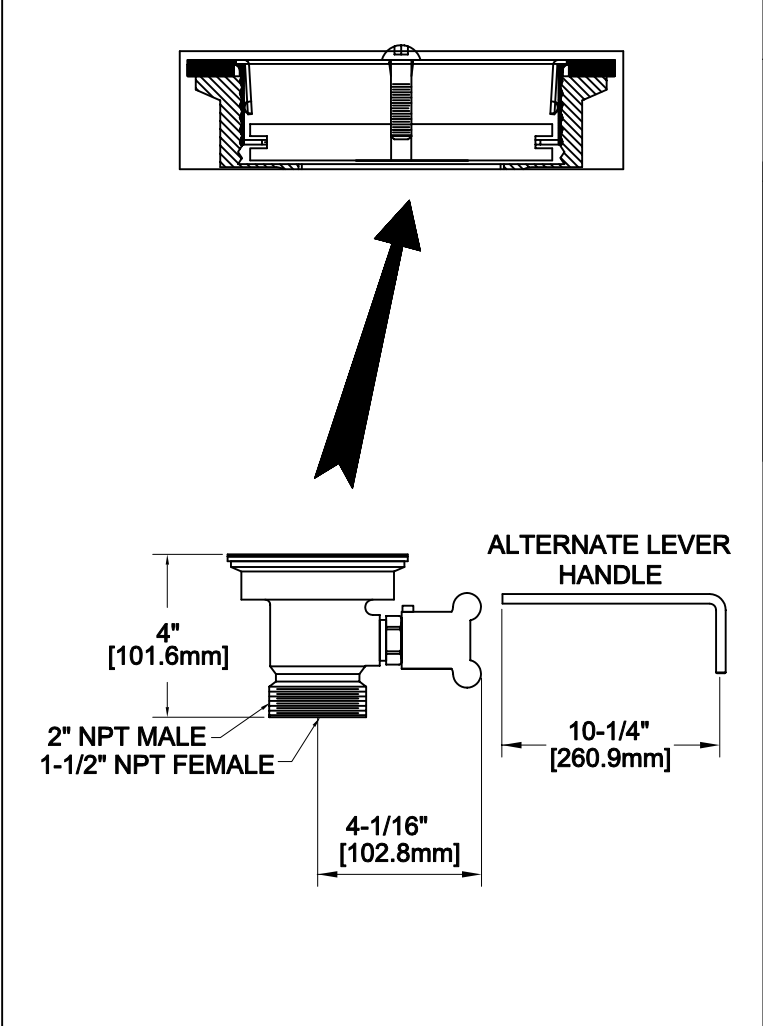
JOB NAME:

QUANTITY:                      ITEM NO.

PRODUCT NAME:

**DrainKing WASTE VALVE**

SPECIAL CONFIGURATION  
CHECK BASE MODEL AND OPTIONS



MODEL:

22365 W/ VR FLAT STRAINER & KNOB

OPTIONS OR MODIFICATIONS:

OTHER \_\_\_\_\_

- FEATURES:
- \* DUAL TEFLON SEALS
  - \* STAINLESS STEEL BALL
  - \* CAST RED BRASS BODY
  - \* STAINLESS STEEL CLAMPING RING
  - \* "CLEAR THROUGH" OPENING, NO NEED TO DISASSEMBLE IF SNAKING IS REQUIRED
  - \* INDUSTRY STANDARD "SEALING" ANGLE - FITS FLUSH TO STANDARD STAINLESS STEEL SINKS
  - \* VANDAL RESISTANT STAINLESS STEEL FLAT STRAINER
  - \* VANDAL RESISTANT KNOB
  - \* 1/4 TURN FULLY OPENS AND CLOSES VALVE
  - \* SUPPLIED WITH:  
ALTERNATE LEVER HANDLE

DRAIN RATE:

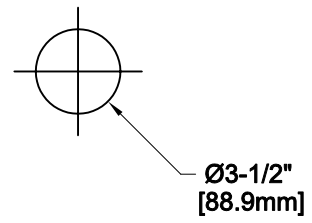
- \* 12 GPM

SHIPPING WEIGHT

- \* 5.0 LBS

ROUGH-IN:

DRAIN:



FISHER MANUFACTURING COMPANY

TOLL FREE: 800-421-6162 - FAX: 800-832-8238

information@fisher-mfg.com - www.fisher-mfg.com