

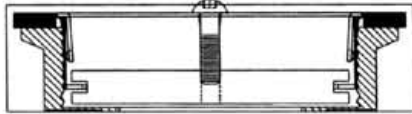
JOB NAME:

QUANTITY:

ITEM NO.:

PRODUCT NAME:

**DrainKing WASTE VALVE
ROUGH CHROME**



_____ SPECIAL CONFIGURATION
(CHECK BASE MODEL AND OPTIONS)

MODEL:

28991 w/ VR FLAT STRAINER & KNOB

OPTIONS OR MODIFICATIONS:

OTHER _____

FEATURES:

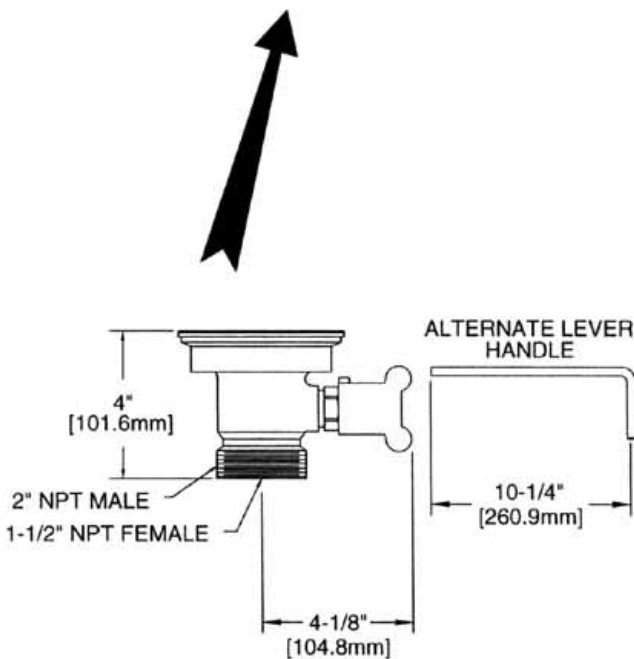
- * DUAL TEFLON SEALS
- * STAINLESS STEEL BALL
- * CAST RED BRASS BODY, CHROME PLATED
- * EXTRA STURDY STAINLESS STEEL CLAMPING RING
- * "CLEAR THROUGH " OPENING - NO NEED TO DISSASSEMBLE IF SNAKING IS REQUIRED
- * INDUSTRY STANDARD "SEALING" ANGLE - FITS FLUSH TO STANDARD STAINLESS STEEL SINKS
- * VANDAL RESISTANT STAINLESS STEEL FLAT STRAINER
- * VANDAL RESISTANT KNOB
- * 1/4 TURN FULLY OPENS AND CLOSES VALVE
- * SUPPLIED WITH:
ALTERNATE LEVER HANDLE

DRAIN RATE:

- * 12 GPM

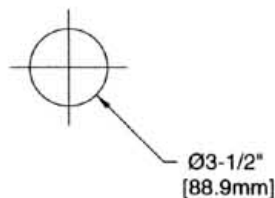
SHIPPING WEIGHT

- * 5.0 LBS



ROUGH-IN:

DRAIN:



ANSI/A112.18.1M