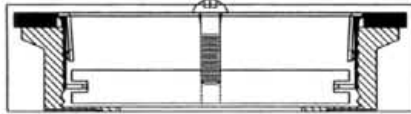


JOB NAME:

QUANTITY:

ITEM NO.:



PRODUCT NAME:

**DrainKing WASTE VALVE
ROUGH CHROME**

_____ SPECIAL CONFIGURATION
(CHECK BASE MODEL AND OPTIONS)

MODEL:

29041 w/ VANDAL RESISTANT FLAT STRAINER &
KNOB OVERFLOW BODY

OPTIONS OR MODIFICATIONS:

OTHER _____

FEATURES:

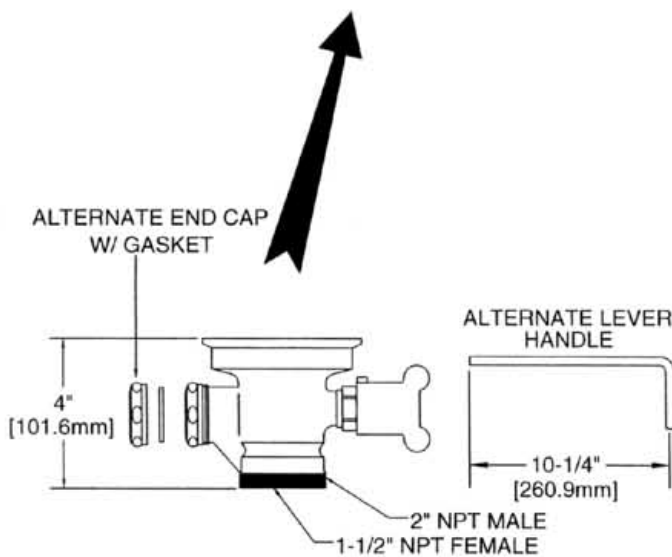
- * DUAL TEFLON SEALS
- * STAINLESS STEEL BALL
- * CAST RED BRASS BODY, CHROME PLATED
- * EXTRA STURDY STAINLESS STEEL CLAMPING RING
- * "CLEAR THROUGH" OPENING - NO NEED TO DISASSEMBLE IF SNAKING IS REQUIRED
- * INDUSTRY STANDARD "SEALING" ANGLE - FITS FLUSH TO STANDARD STAINLESS STEEL SINKS
- * STAINLESS STEEL VANDAL RESISTANT FLAT STRAINER
- * VANDAL RESISTANT KNOB
- * END CAP W/ GASKET INSTALLED
- * 1/4 TURN FULLY OPENS AND CLOSES VALVE
- * SUPPLIED WITH:
 - ALTERNATE LEVER HANDLE
 - ALTERNATE SLIP JOINT NUT & WASHER

DRAIN RATE:

* 12 GPM

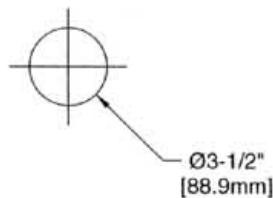
SHIPPING WEIGHT

* 5.5 LBS



ROUGH-IN:

DRAIN:



ANSI/A112.18.1M