

APPLICATION:

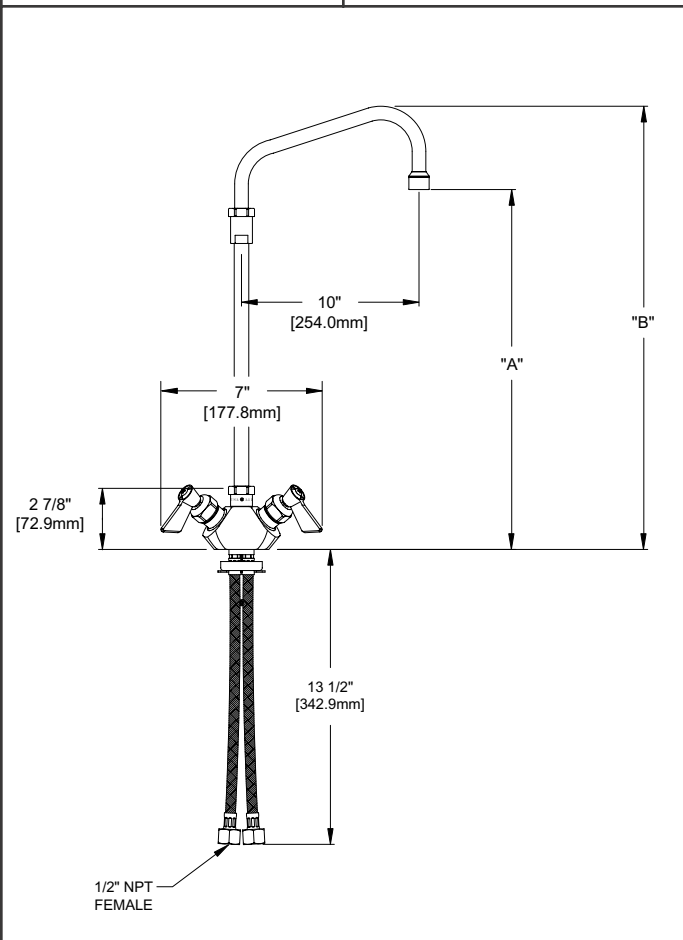
JOB NAME:

QUANTITY: ITEM NO.

PRODUCT NAME:
 SINGLE DECK DUAL CONTROL KETTLE FILLER WITH 10" SWING SPOUT

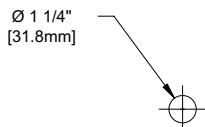
_____ SPECIAL CONFIGURATION
 (CHECK BASE MODEL AND OPTIONS)

MODEL:
 94145 SDDC KETTLE FILLER WITH 12" RISER
 81523 SDDC KETTLE FILLER WITH 16" RISER



| MODEL | DIM "A" | DIM "B" |
|-------|----------------------|----------------------|
| 94145 | 15 3/4" [400.1mm] | 19 1/2" [495.3mm] |
| 81523 | 19 3/4" [501.7mm] | 23 1/2" [596.9mm] |

ROUGH-IN:



OPTIONS OR MODIFICATIONS

VANDAL RESISTANT KIT
 HANDLES (CROSS OR WRIST) CIRCLE STYLE
 OTHER _____

- FEATURES:
- CONTROL VALVE
- * SINGLE DECK DUAL CONTROL
 - * INTERNAL SPRING LOADED CHECK VALVES
 - * HOT SIDE STEM - RIGHT HAND
 - * COLD SIDE STEM - LEFT HAND
 - * SWIVELLING SEAT DISKS
 - * STAINLESS STEEL SEATS
 - * STAINLESS STEEL SEAT SCREWS
 - * STAINLESS STEEL HANDLE SCREWS
 - * STAINLESS STEEL BRAIDED INLET HOSES

- SYSTEM LIMITS
- * TEMP: 40°F MIN. TO 140°F MAX.
 - * PRESSURE 200 PSI MAX. STATIC
 - * 2.20 GPM AT 60 PSI

SHIPPING WEIGHT

- * 5.5 LBS

ANSI/A112.18.1M

FISHER

FISHER MANUFACTURING COMPANY
 TOLL FREE: 800-421-6162 - FAX: 800-832-8238
 information@fisher-mfg.com - www.fisher-mfg.com