

APPLICATION:

PRODUCT NAME:

**8" C/C BACKSPLASH FAUCET**

JOB NAME:

■ 99759 SPECIAL CONFIGURATION  
(CHECK BASE MODEL AND OPTIONS)

QUANTITY:

ITEM NO.:

MODEL:

- 13234 W/ 6" SWING SPOUT  
☐ 13242 W/ 8" SWING SPOUT  
☐ 13250 W/ 10" SWING SPOUT  
☐ 13269 W/ 12" SWING SPOUT  
☐ 13277 W/ 14" SWING SPOUT  
☐ 13218 W/ 16" SWING SPOUT

OPTIONS OR MODIFICATIONS:

- ☐ SUPPLY LINES (24" OR 36") CIRCLE LENGTH  
☐ DJ SUB-ASSY (7-1/4" OR 13") CIRCLE LENGTH  
 ■ ELBOWS  
☐ VANDAL RESISTANT KIT  
☐ HANDLES (CROSS OR WRIST) CIRCLE STYLE  
☐ OTHER \_\_\_\_\_

FEATURES:

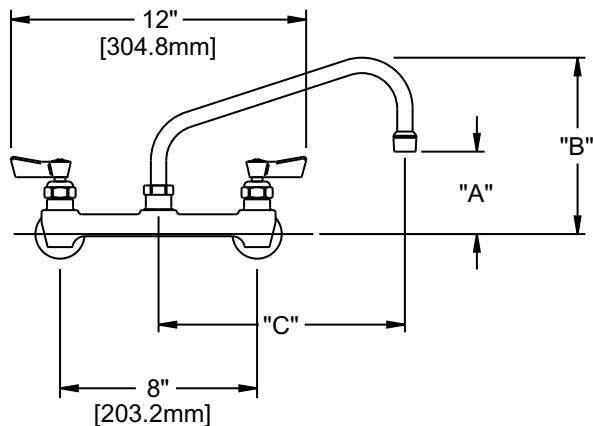
- \* 8" C/C BACKSPLASH MOUNT  
 \* SWIVELING SEAT DISKS  
 \* HOT SIDE STEM - RIGHT HAND  
 \* COLD SIDE STEM - LEFT HAND  
 \* STAINLESS STEEL SEATS  
 \* STAINLESS STEEL SEAT SCREWS  
 \* STAINLESS STEEL HANDLE SCREWS  
 \* 1/2" SLIP JOINT

SYSTEM LIMITS

- \* TEMP: 40°F MIN. TO 140°F MAX.  
 \* PRESSURE 200 PSI MAX. STATIC  
 \* 2.20 GPM AT 80 PSI

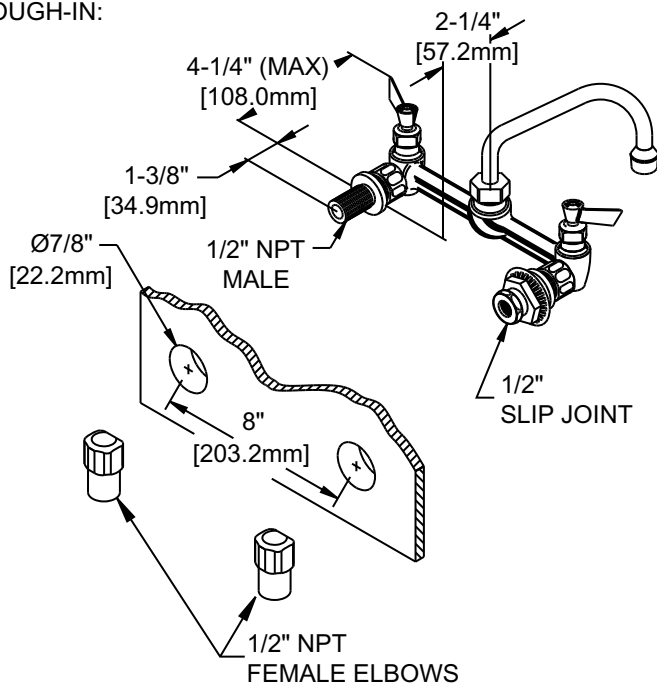
SHIPPING WEIGHT

- \* 3.5 LBS



MODEL	DIM "A"	DIM "B"	DIM "C"
13234	2-1/4" [57.2mm]	5-7/8" [149.2mm]	6" [152.4mm]
13242	2-1/2" [63.5mm]	6-3/8" [161.9mm]	8" [203.2mm]
13250	3-1/8" [79.4mm]	6-7/8" [174.6mm]	10" [254.0mm]
13269	3-3/4" [95.3mm]	7-3/8" [187.3mm]	12" [304.8mm]
13277	4-3/8" [111.1mm]	8-1/4" [209.6mm]	14" [355.6mm]
13218	5" [127.0mm]	8-7/8" [225.4mm]	16" [406.4mm]

ROUGH-IN:



ANSI/A112.18.1M, ANSI/NSF 61.9

# FISHER

FISHER MANUFACTURING COMPANY  
 TOLL FREE: 800-421-6162 - FAX: 800-832-8238  
 information@fisher-mfg.com - www.fisher-mfg.com