

BUCKET AND CAN OPENERS

Can Openers



Rugged cast iron construction ensures years of dependability

EDCO1 The industry standard. For use with cans up to 11" high

EDCO2 As above, but cans up to 7" high

OCCO1 For use with cans up to 11" high. The OC-CO line is fully compatible and interchangeable with the industry standard

OCCO2 Smaller model, for cans up to 7". Once again parts are compatible.



Model	Description	Packaging Weight	Packaging Dimensions	Item #
ED-CO-#1	Can Opener (Edlund 11") #1 with standard base	8 lbs.	19.50" x 4.25" x 7.75"	10576
ED-CO-#2	Can Opener (Edlund 7") #2 with standard base	8.75 lbs.	17.50" x 4.25" x 9"	10577
OC-CO-#1	Can Opener #1 OMC	8 lbs.	20" x 5" x 10.25"	10582
OC-CO-#2	Can Opener #2 OMC	8.75 lbs.	18" x 5" x 10"	10583

Bucket Openers



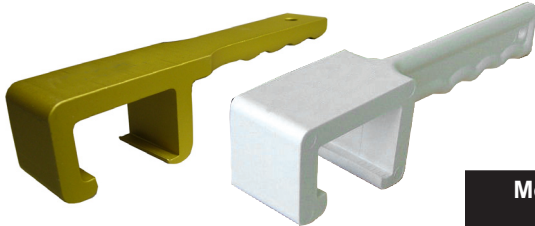
Model 900

Rugged Aluminum opener, 21" long for extra leverage. Easily remove and reseal lids from 4, 5, 6, gallon buckets.

Model	Description	Packaging Weight	Item #
Model 900	Bucket Opener 21"	4 lbs.	13946

Economy Openers

Sturdy one-piece plastic safely removes stubborn lids without distorting. Dishwasher safe, 8" long. For heavy-duty applications, the aluminum opener offers greater strength.



Model	Description	Packaging Weight	Packaging Dimensions	Item #
Model 110N	Plastic Bucket Opener	1 lb.	9" x 3" x 3"	14189
Model 110A	Aluminum Bucket Opener	2 lbs.	9" x 3" x 3"	14188

Mississauga, Ontario, Canada

Niagara Falls, New York, USA

Tel: (905) 828-0234 Toll-Free: 1-800-465-0234 Fax: (905) 607-0234 Email: sales@omcan.com

www.omcan.com