

MACHINE PLATES

European Style Hard Steel Machine Plates with hub Stainless Steel



HOLE SIZE	12	22	32
1/8" (3.2 mm)	11192	11199	11206
3/16" (4.8 mm)	11193	11200	11207
1/4" (6.4 mm)	11194	11201	11208
5/16" (8 mm)	11195	11202	11209
3/8" (9.5 mm)	11196	11203	11210
1/2" (12.8 mm)	11197	11204	11211
3/4" (19.2 mm)	11198	11205	11212

European Style machine plates without hub Stainless Steel

HOLE SIZE	12	22	32
1/8" (3.2 mm)	11213	11220	11227
3/16" (4.8 mm)	11214	11221	11228
1/4" (6.4 mm)	11215	11222	11229
5/16" (8 mm)	11216	11223	11230
3/8" (9.5 mm)	11217	11224	11231
1/2" (12.8 mm)	11218	11225	11232
3/4" (19.2 mm)	11219	11226	11233



Machine Plate-Carbon Steel with Hub



HOLE SIZE	8	12	22	32
3/32" (2.8 mm)	11102	11113	11124	11135
1/8" (3 mm)	11103	11114	11125	11136
3/16" (4.8 mm)	11104	11115	11126	11137
1/4" (6 mm)	11105	11116	11127	11138
5/16" (8 mm)	11106	11117	11128	11139
3/8" (9.5 mm)	11107	11118	11129	11140
1/2" (12.8 mm)	11108	11119	11130	11141
9/16" (14 mm)	11109	11120	11131	11142
5/8" (16 mm)	11110	11121	11132	11143
3/4" (19.2 mm)	11111	11122	11133	11144
13/16" (20 mm)	-----	11123	11134	11145



Mississauga, Ontario, Canada

Niagara Falls, New York, USA

Tel: (905) 828-0234 Toll-Free: 1-800-465-0234 Fax: (905) 607-0234 Email: sales@omcan.com

www.omcan.com

MACHINE PLATES

Carbon Steel Machine Plate-Hubless

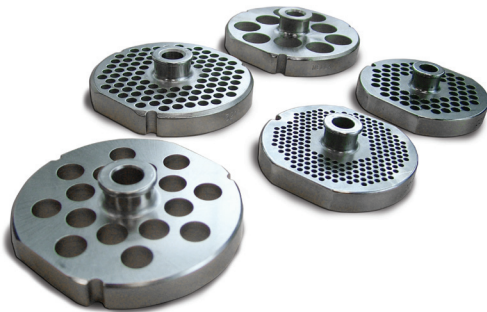
HOLE SIZE	12	22	32
3/32" (2.38 mm)	11234	11245	11256
1/8" (3 mm)	11235	11246	11257
3/16" (4.8 mm)	11236	11247	11259
1/4" (6 mm)	11237	11248	11260
3/8" (9.5 mm)	11239	11250	11262
1/2" (12.8 mm)	11240	11251	11263
9/16" (14 mm)	11241	11252	11264
5/8" (16 mm)	11242	11253	11265
3/4" (19.2 mm)	11243	11254	11266
13/16" (20 mm)	11244	11255	11267



D2 Hard Steel Plates with hub

Item	Description
11146	# 22, 2.38 mm (3/32")
11147	# 22, 3.2mm (9/64")
11148	# 22, 3.5mm (1/8")
11149	# 22, 4mm (5/32")
11150	# 22, 4.8mm (3/16")
11151	# 22, 6.4mm (1/4")
11152	# 22, 9.5mm (3/8")
11153	# 22, 12.8mm (1/2")
11154	# 22, 19.2mm (3/4")

Item #	Description
11155	# 32, 2mm (5/64")
11156	# 32, 3mm (3/32")
11157	# 32, 3.5mm (1/8")
11158	# 32, 3.6mm (9/64")
11159	# 32, 4mm (5/32")
11160	# 32, 4.5mm (3/16")
11161	# 32, 4.8mm (3/16")
11162	# 32, 16mm (5/8")
11163	# 32, 6mm (1/4")
11164	# 32, 10mm (3/8")
11165	# 32, 12mm (1/2")
11166	# 32, 1.8mm (3/4")
11167	# 32, 20mm (13/16")
11168	# 32, 25mm (1")
11169	# 32, MP # 29 3 Notches, Round



Mississauga, Ontario, Canada

Niagara Falls, New York, USA

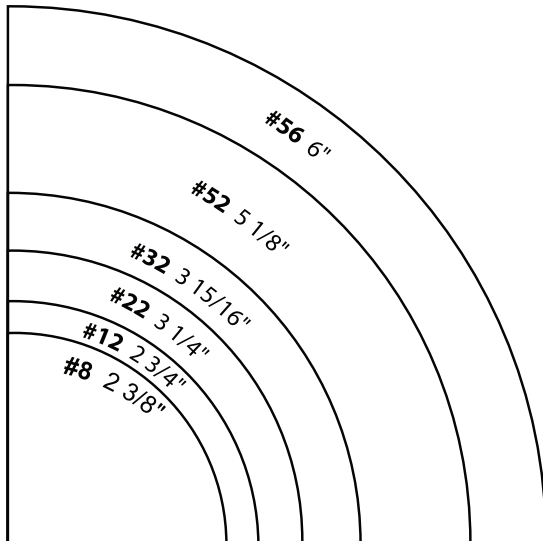
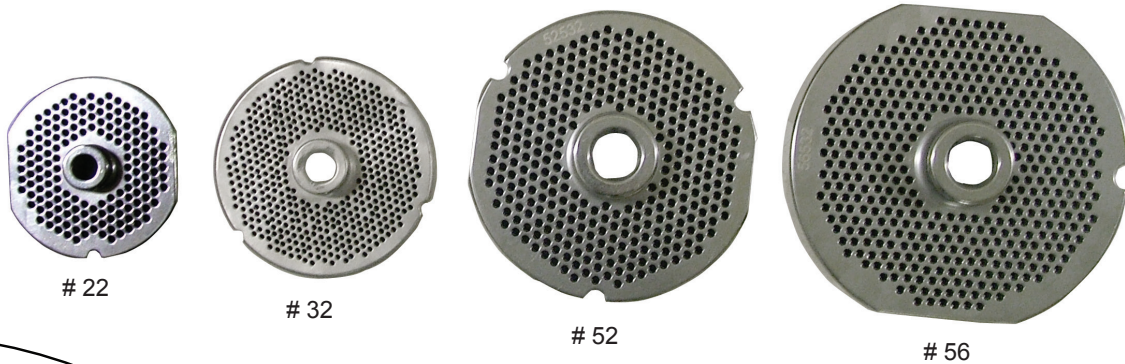
Tel: (905) 828-0234 Toll-Free: 1-800-465-0234 Fax: (905) 607-0234 Email: sales@omcan.com

www.omcan.com

MACHINE PLATES

Item #	Description
11170	# 52, 2.38mm (3/32")
11171	# 52, 3.5mm (1/8")
11172	# 52, 3.2mm (9/64")
11173	# 52, 4mm (5/32")
11174	#52, 4.8mm (3/16")
11175	#52, 6.4mm (1/4")
11176	#52, 9.5mm (3/8")
11177	#52, 12.8mm (1/2")
11178	#52, 19.2mm (3/4")
11179	#52, 25mm (1")
11180	#52, 31.4mm (1 1/4")

Item #	Description
11181	# 56, 2.38mm (3/32")
11182	# 56, 3.2mm (9/64")
11183	# 56, 3.5mm (1/8")
11184	# 56, 4mm (5/32")
11185	#56, 4.8mm (3/16")
11186	#56, 6.4mm (1/4")
11187	#56, 9.5mm (3/8")
11188	#56, 12.8mm (1/2")
11189	#56, 19.2mm (3/4")
11190	#56, 25mm (1")
11191	#56, 31.4mm (1 1/4")



Kidney Plates

Item	Description	Item #
MPS32KD	#32 Kidney Plate - 3 holes	11308
MPS52KD	#52 Kidney Plate - 3 holes	11321
MPS56KD	#56 Kidney Plate - 3 holes	18726

Mississauga, Ontario, Canada

Niagara Falls, New York, USA

Tel: (905) 828-0234 Toll-Free: 1-800-465-0234 Fax: (905) 607-0234 Email: sales@omcan.com

www.omcan.com