



POT SINKS

TRIPLE POT SINK



- Comes with corner drain guards
- Stainless Steel: 304
- Gauge: 18
- Faucet holes are 8" on center.
- Shipped with legs removed.



Item	Item Description	Overall Dimensions (DWH)	Weight (lbs)
22114	18" x 18" x 11" Three tub sink with no drain board	59" x 23 1/2" x 44"	75
22115	18" x 18" x 11" Three tub sink with left drain board	75" x 23 1/2" x 44"	80
22116	18" x 18" x 11" Three tub sink with right drain board	75" x 23 1/2" x 44"	80
22117	18" x 18" x 11" Three tub sink with two drain boards	90" x 23 1/2" x 44"	95
22120	24" x 24" x 14" Three tub sink with no drain board	77" x 29 1/2" x 44"	110
25259	24" x 24" x 14" Three tub sink with left drain board	98 1/2" x 29 1/2" x 44"	136
25260	24" x 24" x 14" Three tub sink with right drain board	98 1/2" x 29 1/2" x 44"	136
25261	24" x 24" x 14" Three tub sink with two drain boards	120" x 29 1/2" x 44"	150
25270	18" x 21" x 14" Three tub sink with no drain board	59" x 26 1/2" x 44"	102
25271	18" x 21" x 14" Three tub sink with left drain board	74 1/2" x 26 1/2" x 44"	112
25272	18" x 21" x 14" Three tub sink with right drain board	74 1/2" x 26 1/2" x 44"	112
25273	18" x 21" x 14" Three tub sink with two drain boards	90" x 26 1/2" x 44"	119
21142	Stainless steel knockdown drain board for 18" x 18" sink		
21143	Stainless steel knockdown drain board for 24" x 24" sink		

Mississauga, Ontario, Canada

Niagara Falls, New York, USA

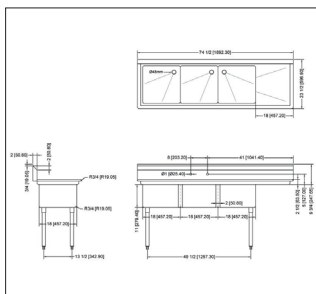
Tel: (905) 828-0234 Toll-Free: 1-800-465-0234 Fax: (905) 607-0234 Email: sales@omcan.com

www.omcan.com

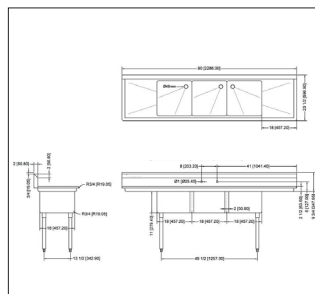
POT SINKS



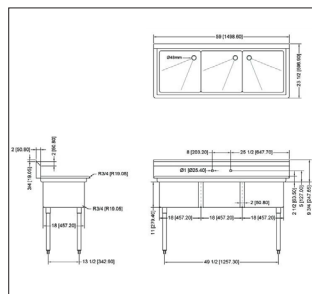
DIAGRAMS
18" x 18" x 11"



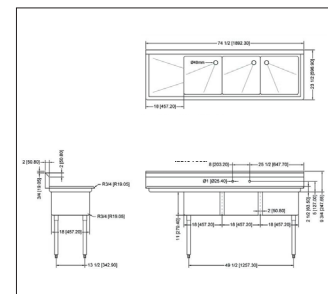
22116 right drain board



22117 two drain boards



22114 no drain board



22115 left drain board

Mississauga, Ontario, Canada

Niagara Falls, New York, USA

Tel: (905) 828-0234 Toll-Free: 1-800-465-0234 Fax: (905) 607-0234 Email: sales@omcan.com

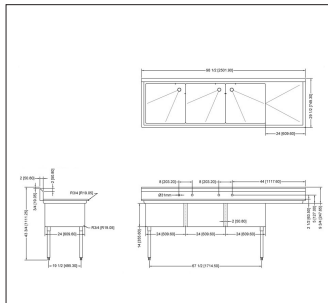
www.omcan.com



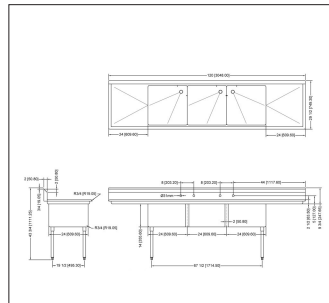
POT SINKS



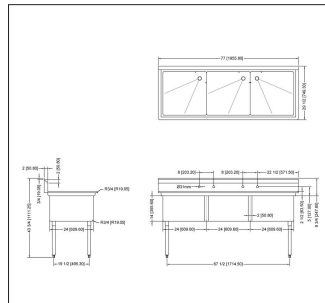
DIAGRAMS
24" x 24" x 14"



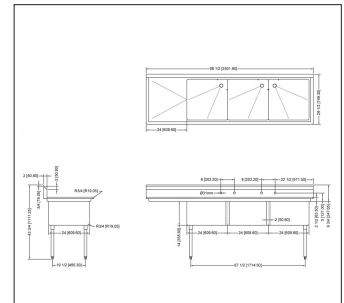
25260 right drain board



25261 two drain boards



22120 no drain board



25259 left drain board

Mississauga, Ontario, Canada

Niagara Falls, New York, USA

Tel: (905) 828-0234 Toll-Free: 1-800-465-0234 Fax: (905) 607-0234 Email: sales@omcan.com

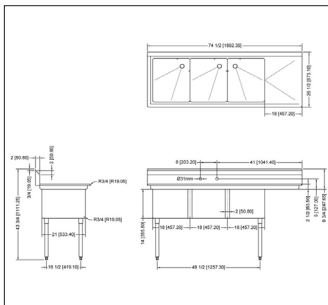
www.omcan.com



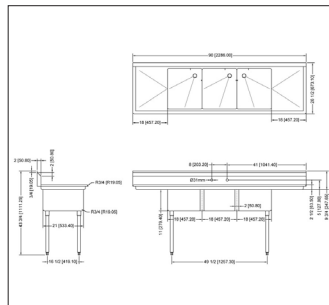
POT SINKS



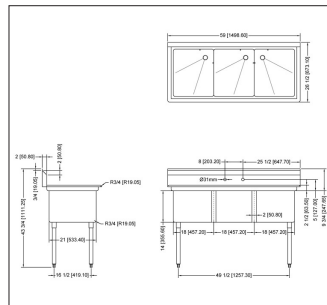
DIAGRAMS
18" x 21" x 14"



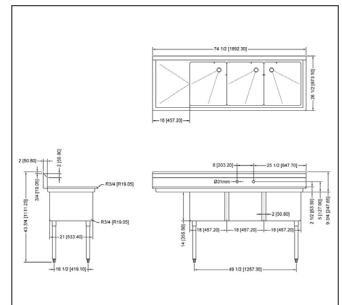
25272 right drain board



25273 two drain boards



25270 no drain board



25271 left drain board



Mississauga, Ontario, Canada

Niagara Falls, New York, USA

Tel: (905) 828-0234 Toll-Free: 1-800-465-0234 Fax: (905) 607-0234 Email: sales@omcan.com

www.omcan.com