

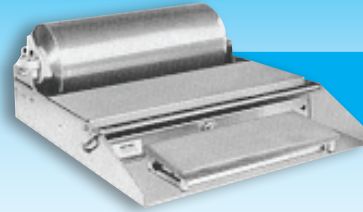


## WRAPPING MACHINES

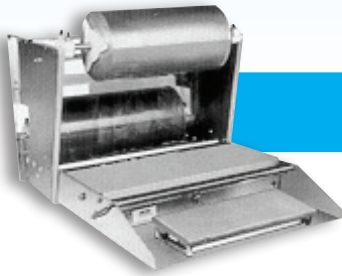
Our wrapping machines feature tough aluminum and stainless steel construction with an all-stainless wrapping surface for quick easy clean up.

Each wrapper is equipped with extra large rubber feet to prevent sliding on any counter surface.

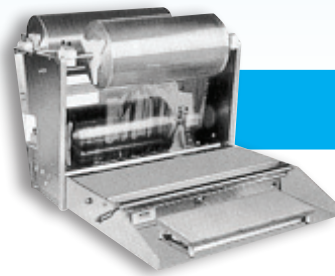
All feature the solid state controlled hot rod cut off bar and standard size hot plate with a non-stick Teflon cover



Model 625-A



Model 825-A



Model 875-A



### SPECIFICATIONS

Model	625-A	825-A	875-A
Type	One-Roll Basic Unit with Mounting Axle	Two-Roll Model with Mounting Axles	Three-Roll Capacity with Mounting Axles
Hot Plate	6" x 15"	6" x 15"	6" x 15"
Electrical	110V/60/1	110V/60/1	110V/60/1
Weight	30 lbs.	43 lbs.	44 lbs.
Packaging Weight	32 lbs.	45 lbs.	46 lbs.
Dimensions (DWH)	26" x 22.25" x 9"	26" x 22.25" x 18.50"	26" x 22.25" x 18.50"
Packaging Dimensions	30" x 24" x 12"	30" x 26" x 20"	30" x 26" x 20"
Item #	14428	14430	14431



Mississauga, Ontario, Canada

Niagara Falls, New York, USA

Tel: (905) 828-0234 Toll-Free: 1-800-465-0234 Fax: (905) 607-0234 Email: sales@omcan.com

www.omcan.com