

MEAT GRINDERS



Model
ERT12

Model
ERT22

MODEL ERT12 / ERT22

The ERT 12 and ERT 22 is manufactured from stainless steel and equipped with a stainless steel feed pan. Ideally designed for butcher shops, food stores, and restaurants.

SPECIFICATIONS

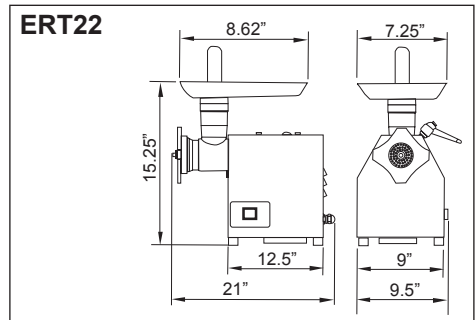
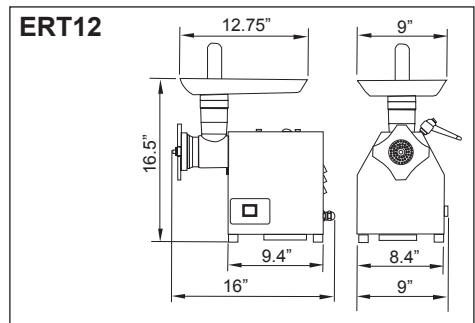
Model	ERT12	ERT22
Horsepower	0.7	1.3
RPM	200	200
Plate Size	8mm and 6mm	9mm and 6mm
Electrical	110V/60/1	110V/60/1
Weight	60 lbs.	77 lbs.
Packaging Weight	66 lbs.	84 lbs.
Dimensions (LWH)	16" x 9" x 16.5"	21" x 9.5" x 15.25"
Packaging Dimensions	20" x 15" x 20"	26" x 15" x 20"
Item #	11046	11048



NEMA
5 - 15
125 VAC / 15 AMP



DIMENSIONS



Mississauga, Ontario, Canada

Niagara Falls, New York, USA

Tel: (905) 828-0234 Toll-Free: 1-800-465-0234 Fax: (905) 607-0234 Email: sales@omcan.com

www.omcan.com