



# MEAT SLICERS

## Volano Meat Slicers

Item #: 20013 / 13634 / 13639 / 18830

Model: MS-IT-0250-M / MS-IT-0300-M / MS-IT-0350-M / MS-IT-0370-M

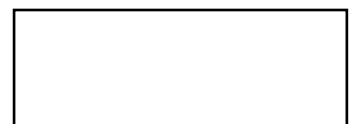


### *Classic Taste, Elegance, Beauty, and Precision*

These slicers are made of aluminium with steel parts and brilliant red finishing. Our Manual Volano Slicers provides easy maintenance and operation. These units are fully hand-operated. The built-in blade sharpener keeps the blade sharp for efficient cutting. The slicers are equipped with a protection ring around its blade to meet CE standards. They are designed for durability and consistent slicing.



*Stand Sold Separately*



Authorized Dealer

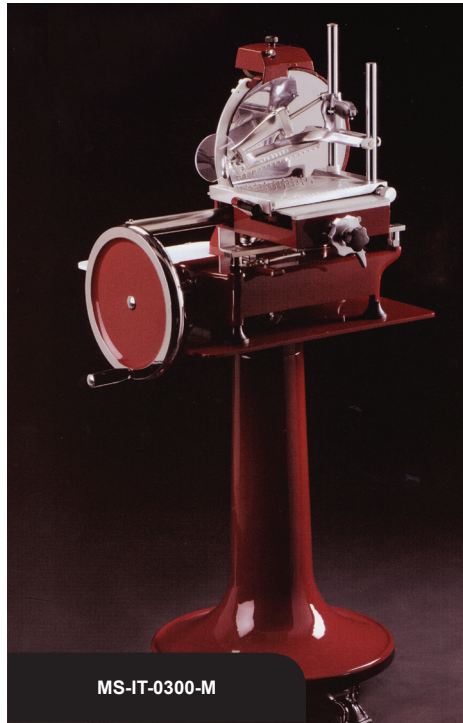


# MEAT SLICERS

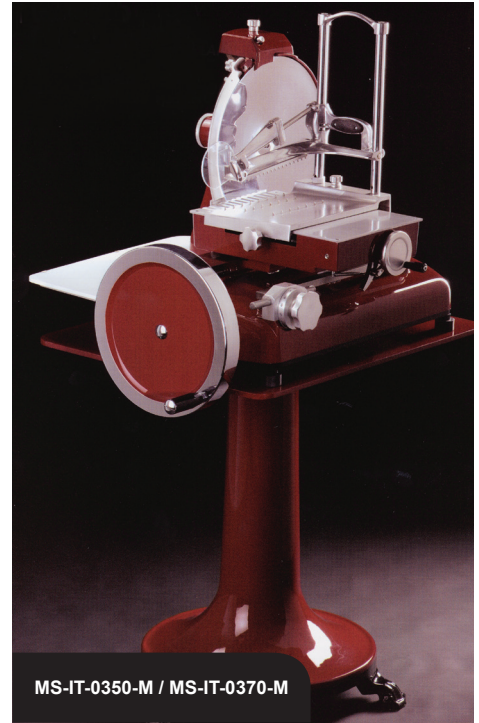
## VOLANO MEAT SLICERS



MS-IT-0250-M



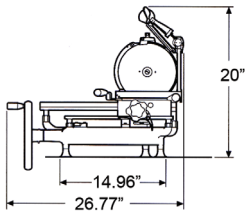
MS-IT-0300-M



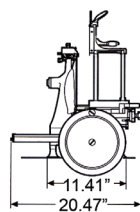
MS-IT-0350-M / MS-IT-0370-M

### PRODUCT SPECIFICATIONS

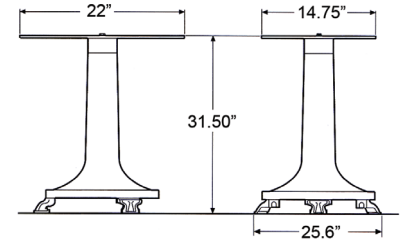
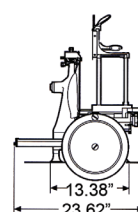
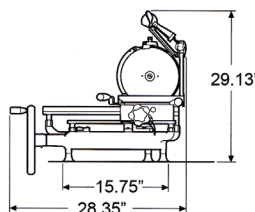
ITEM NUMBER	20013	13634	13639	18830
MODEL	MS-IT-0250-M	MS-IT-0300-M	MS-IT-0350-M	MS-IT-0370-M
BLADE SIZE	10" / 250 mm	12" / 300 mm	14" / 350 mm	14.6" / 370 mm
CUTTING AREA L x H	7.3" x 5.9" 185 x 150 mm	9" x 7.5" 229 x 191 mm	10.6" x 9.4" 269 x 239 mm	10.6" x 9.8" 269 x 249 mm
CUT THICKNESS RANGE	0-0.8" / 0-2 mm	0-0.8" / 0-2 mm	0-1" / 0-2.5 mm	0-1" / 0-2.5 mm
MACHINE WEIGHT	72.6 lbs. / 32.9 kg.	100 lbs. / 45.4 kg.	178 lbs. / 80.7 kg.	178.2 lbs. / 80.8 kg.
STAND WEIGHT	158.4 lbs. / 71.8 kg.	158.4 lbs. / 71.8 kg.	165 lbs. / 74.8 kg.	165 lbs. / 74.8 kg.
PACKAGING WEIGHT	100 lbs. / 45.4 kg.	116 lbs. / 52.6 kg.	234 lbs. / 106.1 kg.	227 lbs. / 103 kg.
PACKAGING DIMENSIONS	30" x 26" x 27" 762 x 660 x 686 mm	30" x 26" x 28" 762 x 660 x 711 mm	37" x 33" x 38" 940 x 838 x 965 mm	37" x 33" x 38" 940 x 838 x 965 mm



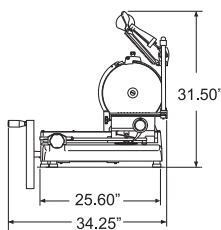
MS-IT-0250-M



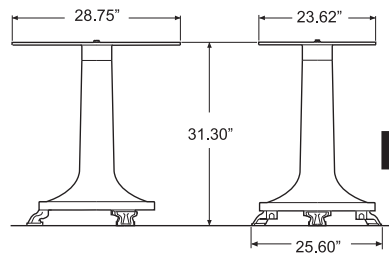
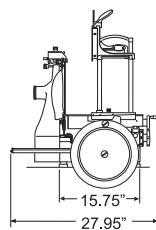
MS-IT-0300-M



\*Pedestal for MS-IT-0250-M / MS-IT-0300-M



MS-IT-0350-M / MS-IT-0370-M



\*Pedestal for MS-IT-0350-M / MS-IT-0370-M

*\*Stands sold separately.*

**ALL FLYWHEEL / FLOWERWHEEL OPTIONS  
AVAILABLE ON REQUEST**



Rosette Flywheel  
- White -



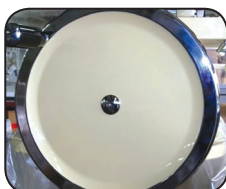
Rosette Flywheel  
- Red -



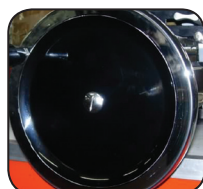
Rosette Flywheel  
- Blue -



Rosette Flywheel  
- Black -



Standard Flywheel  
- White -



Standard Flywheel  
- Black -



Standard Flywheel  
- Red -



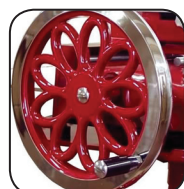
Daisy Flywheel  
- Black with Gold Border -



Daisy Flywheel  
- Black -



Daisy Flywheel  
- Silver with Black Border -



Daisy Flywheel  
- Red -



Daisy Flywheel  
- Dark Red with Silver Border -



Daisy Flywheel  
- Red with Gold Border -



Daisy Flywheel  
- Green -

**STANDS SOLD SEPARATELY**



**ITEM: 20014**  
- Pedestal for MS-IT-0250-M -

**ITEM: 18986**  
- Pedestal for MS-IT-0300-M -

**ITEM: 18987**  
- Pedestal for MS-IT-0350-M / MS-IT-0370-M -

**OMCAN INC.**

Telephone: 1-800-465-0234  
Fax: (905) 607-0234  
E-mail: sales@omcan.com  
Website: www.omcan.com



Follow us to keep up to date with the latest news and offers

