



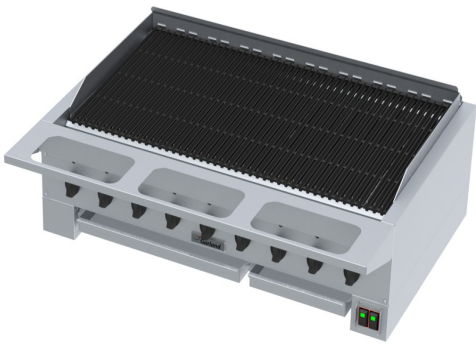
High Efficiency HEEGM Radiant Char-Broiler

Item: _____
 Quantity: _____
 Project: _____
 Approval: _____
 Date: _____

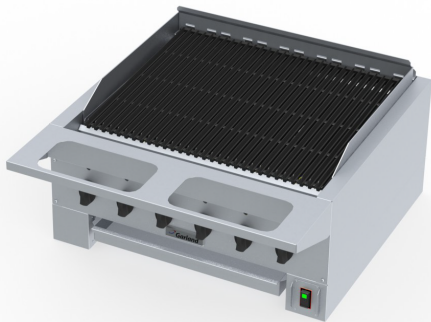
High Efficiency HEEGM Radiant Char-Broiler

Models:

- HEEGM-24CL HEEGM-36CL HEEGM-48CL HEEGM-60CL



Model HEEGM-48CL



Model HEEGM-36CL

Standard Features:

- Stainless steel construction and front rail with cut outs to hold 1/3 size food pans (pans not included)
- Heavy duty removable cast iron grates, reversible with wide brand edge on one side & fine edge on the other.
- Large capacity, removable grease trays.
- Cast iron energy efficient burners with each burner having a cast iron radiant
- Complete system on/off power switch(s), which operate main gas burner ignition & main burner shut down: HEEGM-24CL & 36CL models have one switch HEEGM-48CL and 60CL have two.
- Each burner, rated 14,500 BTU for natural gas & 13,000 BTU for propane gas, and is individually

controlled by a two position hi-lo valve.

- 3/4" gas regulator.
- 9' cord & NEMA 5-15P plug standard for 120V models.
- Combination wire broiler rack cleaning brush and scraper for cleaning cooking grates.

Optional Features:

- Fajita pan rack holder in lieu of two broiler rack sections, N/C. Using only one fajita pan rack holder per broiler is recommended.
- Stainless steel stands with or without casters. See form HEMST.
- 220-240V model available (comes without cord & plug).

NOTE: Broiler may be required to be silicone sealed onto non-combustible work surfaces for NSF requirements to meet local agency approvals.

Specifications:

Shall be Garland High Efficiency (HE) Char-Broiler, Model _____ with total BTU/hr rating of _____ when used with natural gas. Finish is to be stainless steel construction and front rail with 1/3 size food pan cut outs. Available in 24" (610mm) [HEEGM-24CL], 34" (864mm) [HEEGM-36CL], 48" (1219mm) [HEEGM-48CL] and 58" (1473mm) [HEEGM-60CL] widths.



Model #	Shipping Dimensions: In. (mm)			No. Of Burners	Total BTU*		Ship Weight Lbs/Kg	Ship Size Ft ³ /m ³
	Width	Depth	Height		Natural	Propane		
HEEGM-24CL	45/1143	45/1143	25-1/2/648	4	58,000	52,000	280/127	29.9/0.846
HEEGM-36CL	45/1143	45/1143	25-1/2/648	6	87,000	78,000	420/191	29.9/0.846
HEEGM-48CL	65/1651	45/1143	25-1/2/648	9	130,500	117,000	560/254	43.2/1.223
HEEGM-60CL	65/1651	45/1143	25-1/2/648	11	159,500	143,000	700/318	43.2/1.223

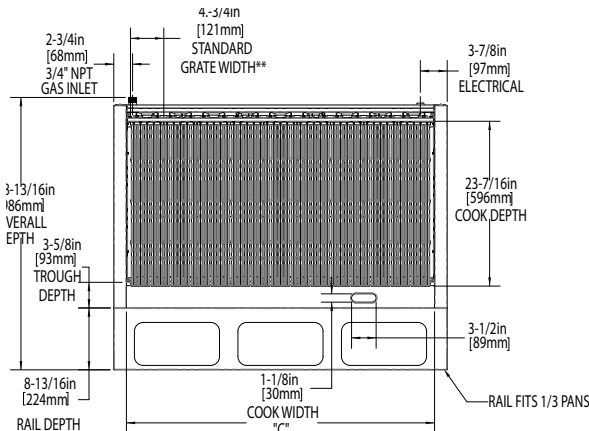
* Total btu based on manifold operating pressure specified in table below and apply to installations up to 2000 ft (610m).

Model	ELECTRICAL REQUIREMENTS			
	Voltage	Frequency	Current	Cord
HEEGM-24&36CL	120	50-60 Hz	0.10 A	NEMA 5-15P
	220-240	50-60 Hz	0.05 A	NOT SUPPLIED
HEEGM-48&60CL	120	50-60 Hz	0.22 A	NEMA 5-15P
	220-240	50-60 Hz	0.11 A	NOT SUPPLIED

NOTE: Wiring Diagram is located in left side of broiler's leg section.

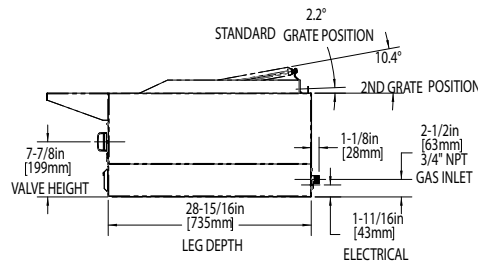
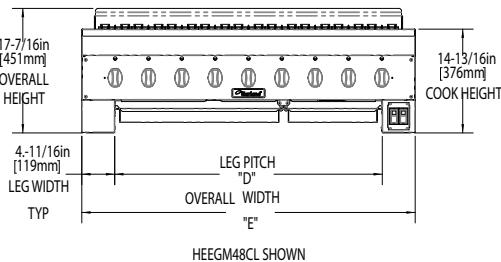
Models	Manifold Operating Pressure w.c.(Mbar)		Manifold Supply Pressure w.c.(Mbar)		Clearance to non-combustible material	
	Natural Gas	Propane	Natural Gas	Propane	Rear (in/mm)	Sides (in/mm)
All Models	4.5(11.2)	10.0(25.0)	7.0(17.4)	11.0(27.5)	0/0	0/0

Garland/U.S. Range products are not approved or authorized for home or residential use, but are intended for commercial applications only. Garland / U.S. Range will not provide service, warranty, maintenance, or support of any kind other than in commercial applications. Many local codes exist and it is the responsibility of the owner and installer to comply with those codes.



**OPTIONAL FAJITA RACK REQUIRES THE REMOVAL OF 2 STANDARD GRATES
STANDARD GRATE AVAILABLE IN ONE-SIDED OR TWO-SIDED STYLES

Model	Cook Width "C"	Leg Pitch "D"	Overall Width "E"	Grease Tray
24"	19.906in (506mm)	14.124in (359mm)	23.50in (597mm)	SINGLE
36"	29.906in (706mm)	24.12in (613mm)	33.500in (851mm)	SINGLE
48"	43.906in (1115mm)	38.124in (968mm)	47.50in (1207mm)	DUAL
60"	53.906in (1369mm)	48.124in (1222mm)	57.500in (1461mm)	DUAL



Form# HEEGM-24-36-48-60 (12/04/12)