

Project: _____	AIA# _____
Item #: _____ Qty: _____	SIS# _____
Model #: _____	

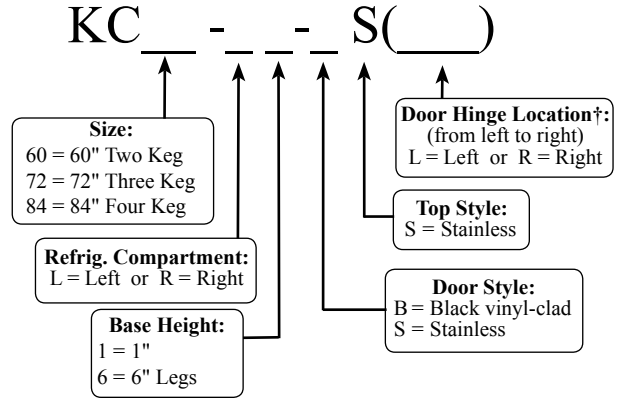
Keg Coolers Two, Three and Four Keg Self-Contained



KC72-L1-BS(LR)



Intertek
Conforms to ANSI/UL STD 471
Certified to CSA STD
C22.2 No. 120



† Specify hinge location for each door

Standard Features

- Galvanized steel interior construction with stainless steel floor
- Stainless steel keg racks and 1/2" thick ABS plastic threshold scuff plate
- Foamed-in-place CFC free insulation
- Stainless steel finished top with draft beer tower and drain pan
- Six foot grounded cord and plug (exits at rear)
- One stainless steel 2-faucet column tower (KC60), One stainless steel 3-faucet column tower (KC72), One stainless steel 4-faucet tee tower (KC84)
- Black vinyl-clad steel exterior front and sides
- Digital thermostat control with automatic defrost (KC60, KC84). Automatic defrost timer (KC72)
- Automatic condensate evaporator
- Leg sockets recessed into base
- 180° swinging doors

Specifications

Electrical

- 120V, 1 phase, 60 Hz
- Dedicated 15 amp circuit is required
- Includes a 6 foot grounded cord and plug which exits the back of refrigeration compartment

Refrigeration

- R134a (KC60)
- R404a (KC72 & KC84)

Operating Range

- 34°F (1°C) to 40°F (4°C)

Plumbing

- Automatic condensate evaporator. No drain connection required
- 1/2" tailpiece provided on drain pan and pre-plumbed drain line which exits out bottom front of refrigeration compartment

Legs

- 1-5/8" diameter
- Stainless steel bullet feet

Materials

- 22 gauge stainless steel parts include: interior floor and front of cabinet
- 22 gauge black vinyl-clad parts include: sides, standard doors, and compressor compartment housing
- 22 gauge galvanized steel parts include: exterior sub-top and back, interior walls, ceiling, and evaporator housing
- 20 gauge stainless steel parts include: keg racks, finished top, and tower
- 16 gauge stainless steel parts include: legs
- 16 gauge galvanized steel parts include: base and compressor compartment base plate
- 16 gauge zinc plated CR steel parts include: leg sockets
- 12 gauge stainless steel parts include: hinges, hinge brackets, and lock brackets

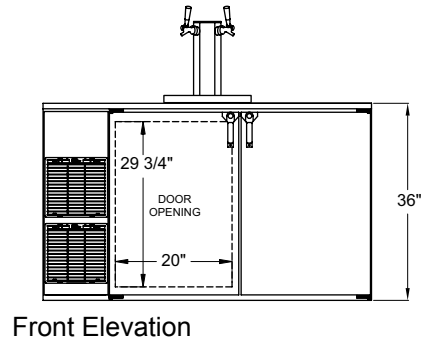
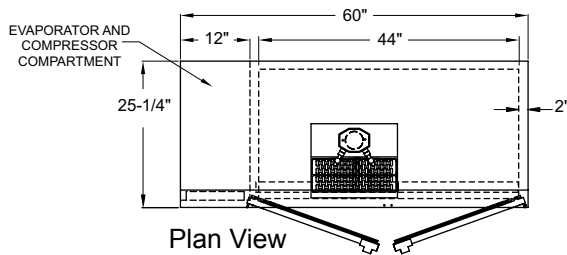
<p>Glastender, Inc. • 5400 N Michigan Rd • Saginaw, MI • 48604-9780 989.752.4275 • 800.748.0423 • Fax 989.752.4444 www.glastender.com</p>	<p>Approval/Notes:</p>
--	------------------------

Specifications subject to change without notice. For current specifications please visit our website.

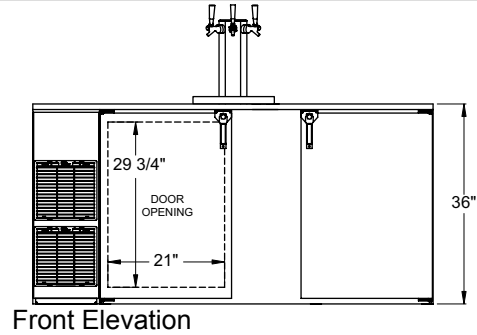
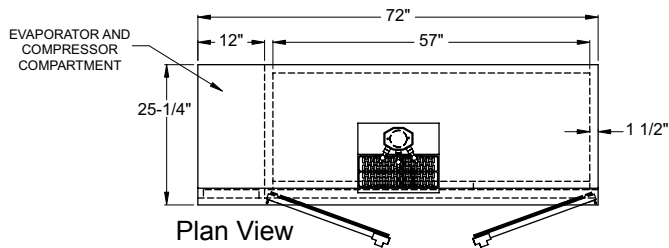
Self-Contained Keg Coolers

Dimensional Information

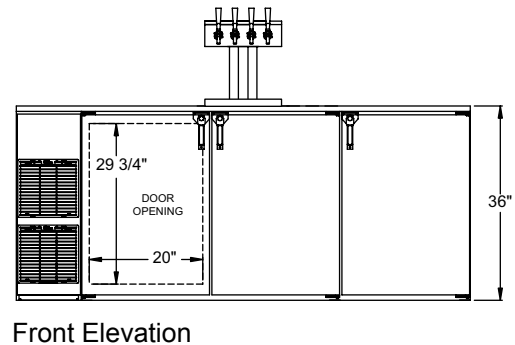
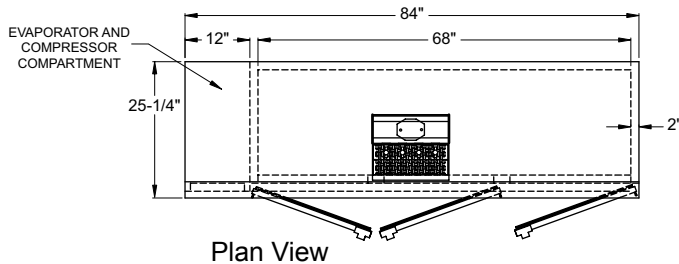
KC60



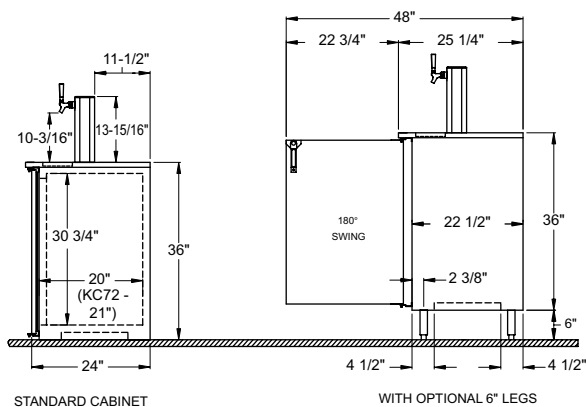
KC72



KC84



Typical Side View



Model	Keg Capacity:	Refrigeration	Voltage	Amps
KC60	2 - quarter barrels or 2 - half barrels	1/3 H.P. / R134a	120v / 60 Hz / 1 phase	7.2 full load
KC72	3 - quarter barrels or 3 - half barrels	1/3 H.P. / R404a	120v / 60 Hz / 1 phase	10.1 full load
KC84	4 - quarter barrels or 4 - half barrels	1/3 H.P. / R404a	120v / 60 Hz / 1 phase	10.1 full load

Note: Available with compressor left or right. Compressor left model shown. Use Model Number Key to specify location when ordering.