



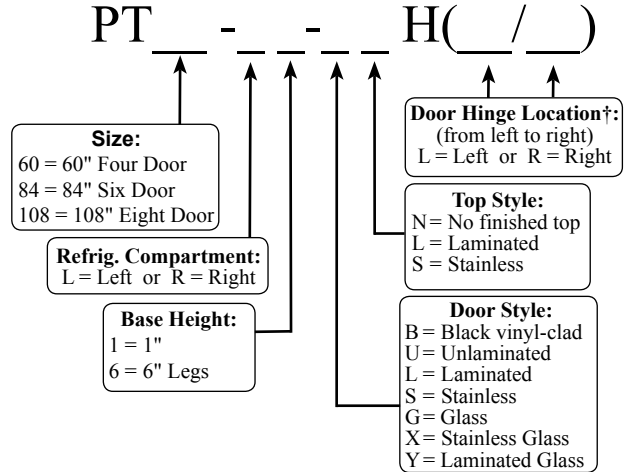
PT60-L1-LLH(LR/RL)



**Intertek**  
 Conforms to ANSI/UL STD 471  
 Certified to CSA STD  
 C22.2 No. 120

Project: _____	AIA# _____
Item #: _____ Qty: _____	SIS# _____
Model #: _____	

## Pass-Thru Coolers Four, Six and Eight Door Self-Contained



† Specify a hinge location for each door

### Standard Features

- Self-contained
- All stainless steel interior construction
- Foamed-in-place CFC free insulation
- Galvanized steel sub-top
- Black vinyl-clad steel exterior front and sides
- Six foot grounded cord and plug (exits at rear)
- Stainless steel die cast handle
- Automatic defrost timer
- Stainless steel evaporator housing with separate removable evaporator drain pan
- Automatic condensate evaporator
- Leg sockets recessed into base
- 1/2" thick ABS plastic threshold scuff plate
- 180° swinging doors

### Specifications

- Electrical**
- 120V, 1 phase, 60 Hz, PT60 - 8.2 full load amps, PT84 and PT108 - 11.1 full load amps
  - Dedicated 15 amp circuit is required
  - Includes a 6 foot grounded cord and plug which exits the back of refrigeration compartment
- Refrigeration**
- PT60 - 1/3 HP, R134a refrigerant
  - PT84 and PT108 - 1/3 HP, R404a refrigerant
- Operating Range**
- 34°F (1°C) to 40°F (4°C)
- Plumbing**
- Automatic condensate evaporator. No drain connection required
- Shelving**
- Two adjustable coated shelves and one bottom coated rack per door included

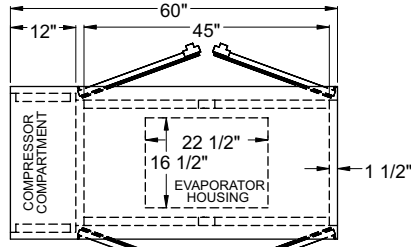
- Legs**
- 1-5/8" diameter
  - Stainless steel bullet feet
- Materials**
- 22 gauge stainless steel parts include: interior floor, walls, ceiling, front of cabinet, and evaporator housing
  - 22 gauge black vinyl-clad parts include: sides, standard doors, and compressor compartment housing
  - 22 gauge galvanized steel parts include: exterior sub-top
  - 16 gauge stainless steel parts include: legs
  - 16 gauge galvanized steel parts include: base and compressor compartment base plate
  - 16 gauge zinc plated CR steel parts include: leg sockets
  - 12 gauge stainless steel parts include: hinges, hinge brackets, and lock brackets

<p><b>Glastender, Inc.</b> • 5400 N Michigan Rd • Saginaw, MI • 48604-9780                  989.752.4275 • 800.748.0423 • Fax 989.752.4444                  www.glastender.com</p>	<p>Approval/Notes:</p>
<p>Specifications subject to change without notice. For current specifications please visit our website.</p>	

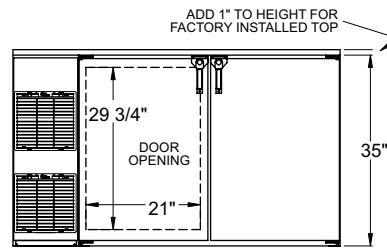
# Self-Contained Pass-Thru Coolers

## Dimensional Information

### PT60

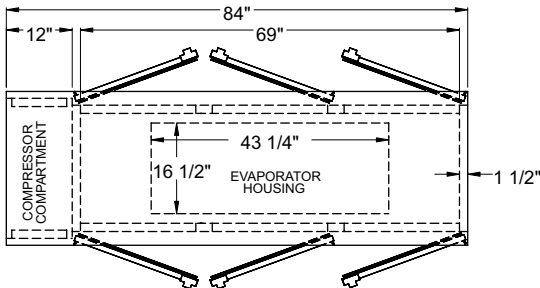


Plan View

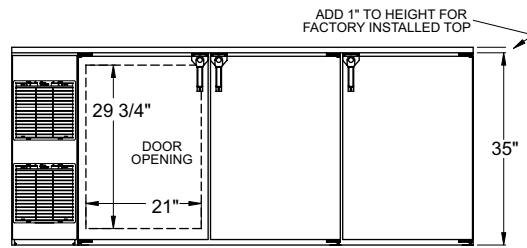


Front Elevation

### PT84

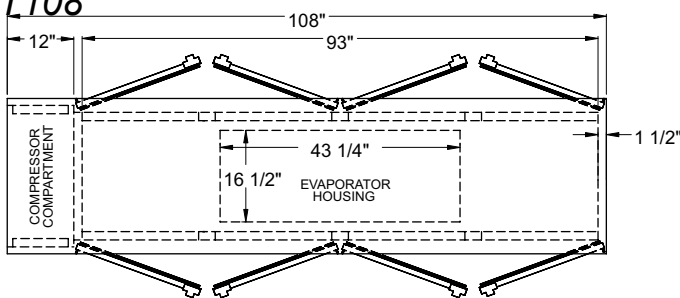


Plan View

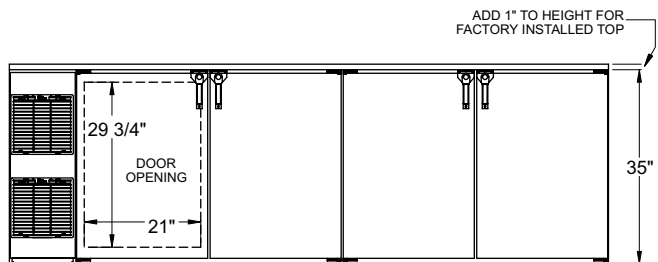


Front Elevation

### PT108

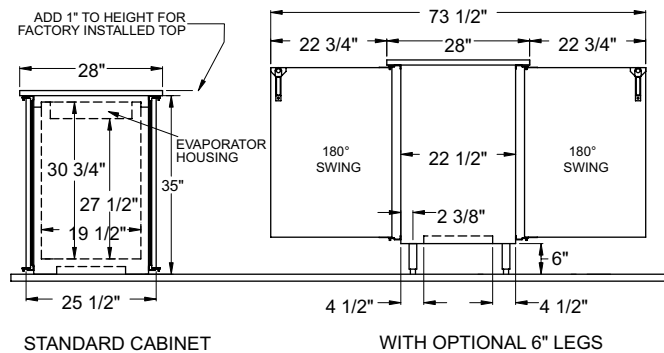


Plan View



Front Elevation

## Side View All Models



Model	Capacity: 12 oz. bottle / 1/2 barrels	Refrigeration	Voltage	Amps
PT60	12.83 cases / 2 half barrel	1/3 H.P. / R22	120v / 60 Hz / 1 phase	8.8 full load
PT84	19.25 cases / 4 half barrels	1/3 H.P. / R404a	120v / 60 Hz / 1 phase	8.8 full load
PT108	28.58 cases / 5 half barrels	1/3 H.P. / R404a	120v / 60 Hz / 1 phase	8.8 full load

Note: Available with compressor left or right. Compressor left model shown. Use Model Number Key to specify location when ordering.



5400 N Michigan Rd • Saginaw, MI • 48604-9780  
989.752.4275 • 800.748.0423 • Fax 989.752.4444  
www.glastender.com