



701 S Ridge Avenue, Troy, OH 45374  
1-888-4HOBART • www.hobartcorp.com

## STEAM BOOSTER HEATER SIZES – ALL MODELS



## STEAM BOOSTER HEATER SIZES – ALL MODELS

	AM15 AM15T AM15F	C44A CRS66A CCS66A CPW80A OPTI-RINSE	C44AW CRS66AW CCS66AW CPW80AW OPTI-RINSE	C54A CRS76A CCS76A CPW90A OPTI-RINSE	C64A CRS86A CCS86A CPW100A OPTI-RINSE	C88A CRS110A CCS110A CPW124A OPTI-RINSE	UW50
FLOWING STEAM PRESSURE	BOOSTER NO.	BOOSTER NO.	BOOSTER NO.	BOOSTER NO.	BOOSTER NO.	BOOSTER NO.	BOOSTER NO.
10	150	150	150	150	150	150	320
15	150	150	150	150	150	150	260
20	150	150	150	150	150	150	260
25	150	150	150	150	150	150	180
30	150	150	150	150	150	150	180
35	150	150	150	150	150	150	180
40	150	150	150	150	150	150	150
45	150	150	150	150	150	150	150
STEAM CONSUMPTION LB./HR.	25	60	37	65	63	63	38

	FT900 OPTI-RINSE	FT900 OPTI-RINSE 6" HTS	FT900S OPTI-RINSE	FT900S 6" HTS	FT900W	FT900W 6" HTS
FLOWING STEAM PRESSURE	BOOSTER NO.	BOOSTER NO.	BOOSTER NO.	BOOSTER NO.	BOOSTER NO.	BOOSTER NO.
10	150	150	150	260	150	150
15	150	150	150	180	150	150
20	150	150	150	180	150	150
25	150	150	150	150	150	150
30	150	150	150	150	150	150
35	150	150	150	150	150	150
40	150	150	150	150	150	150
45	150	150	150	150	150	150
STEAM CONSUMPTION LB./HR.	94	105	56	194	98	105

**Note 1** — Booster sizing based on 20 P.S.I. water flow pressure. Set pressure reducing valve under flow conditions.

**Note 2** — All sizes based on 130°F minimum incoming water temperature raised to 185°F (55°F temperature rise).

**Note 3** — Maximum steam pressure 45 P.S.I.

Order according to incoming steam pressure 10-20 P.S.I., 21-45 P.S.I. range.

Available electrical specifications are 100-120/50/60/1 and 200-240/50/60/1.

Steam boosters require a separate service connection (AM and UW) rated at one of the above two available electrical specifications. Protection device rated at 15 amperes maximum (by others).

The steam booster is electrically controlled by means of a manual off-on switch, electric thermostat and solenoid valve. Included are line strainers and pressure relief valves on both steam and hot water lines, a hot water pressure regulator with pressure gauge and a bucket type steam trap. When operated within the stated range of steam and water pressures the recommended size booster will provide required quantities of final rinse water with machine operating at maximum capacity.

**Note 4** — Base FRC model requirements on basic "C" Line machines.

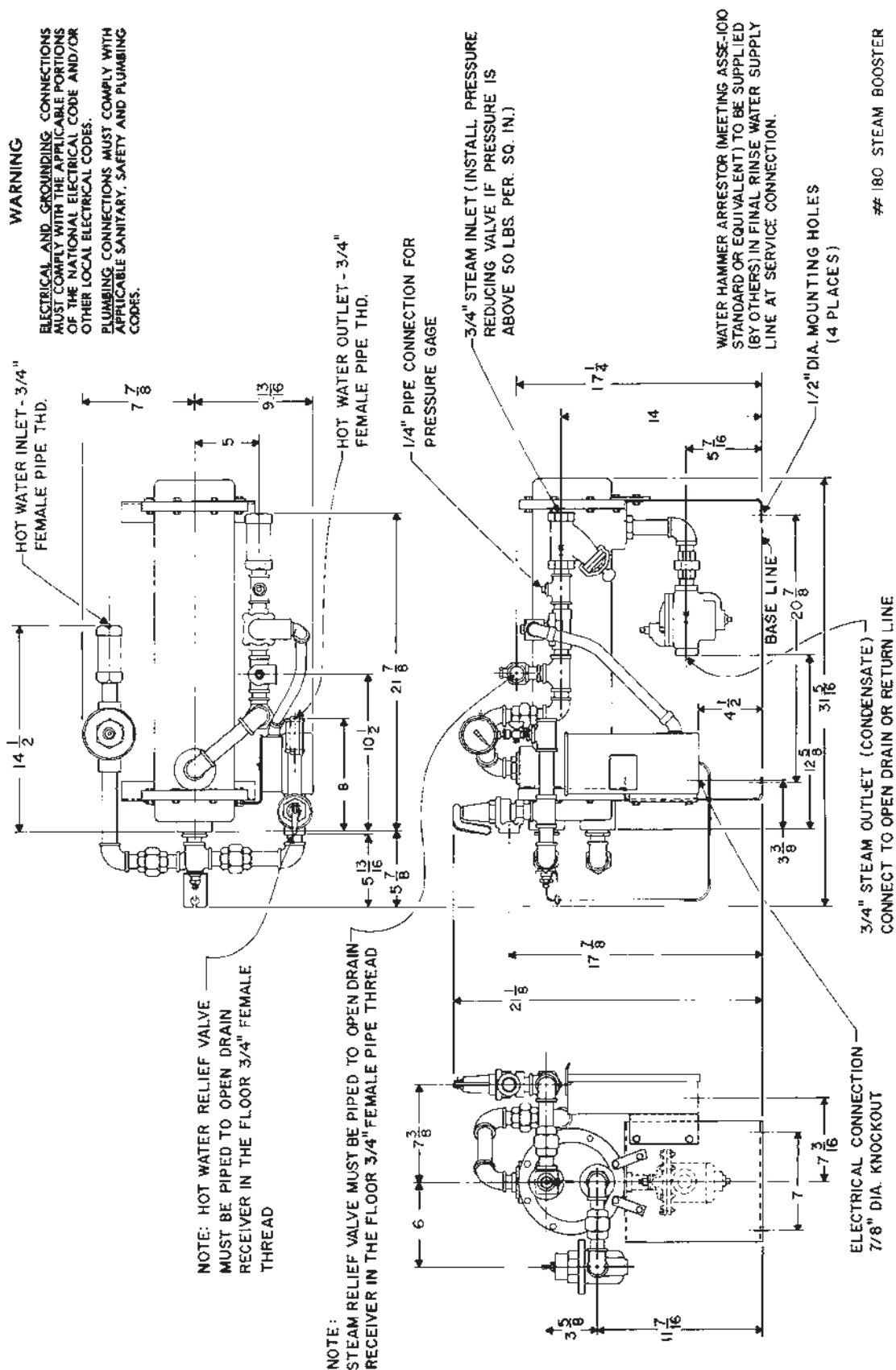
**Note 5** — Indicate available flowing steam pressure when ordering.

# STEAM BOOSTER HEATER SIZES - ALL MODELS

## HOBART

701 S Ridge Avenue, Troy, OH 45374  
1-888-4HOBART • www.hobartcorp.com

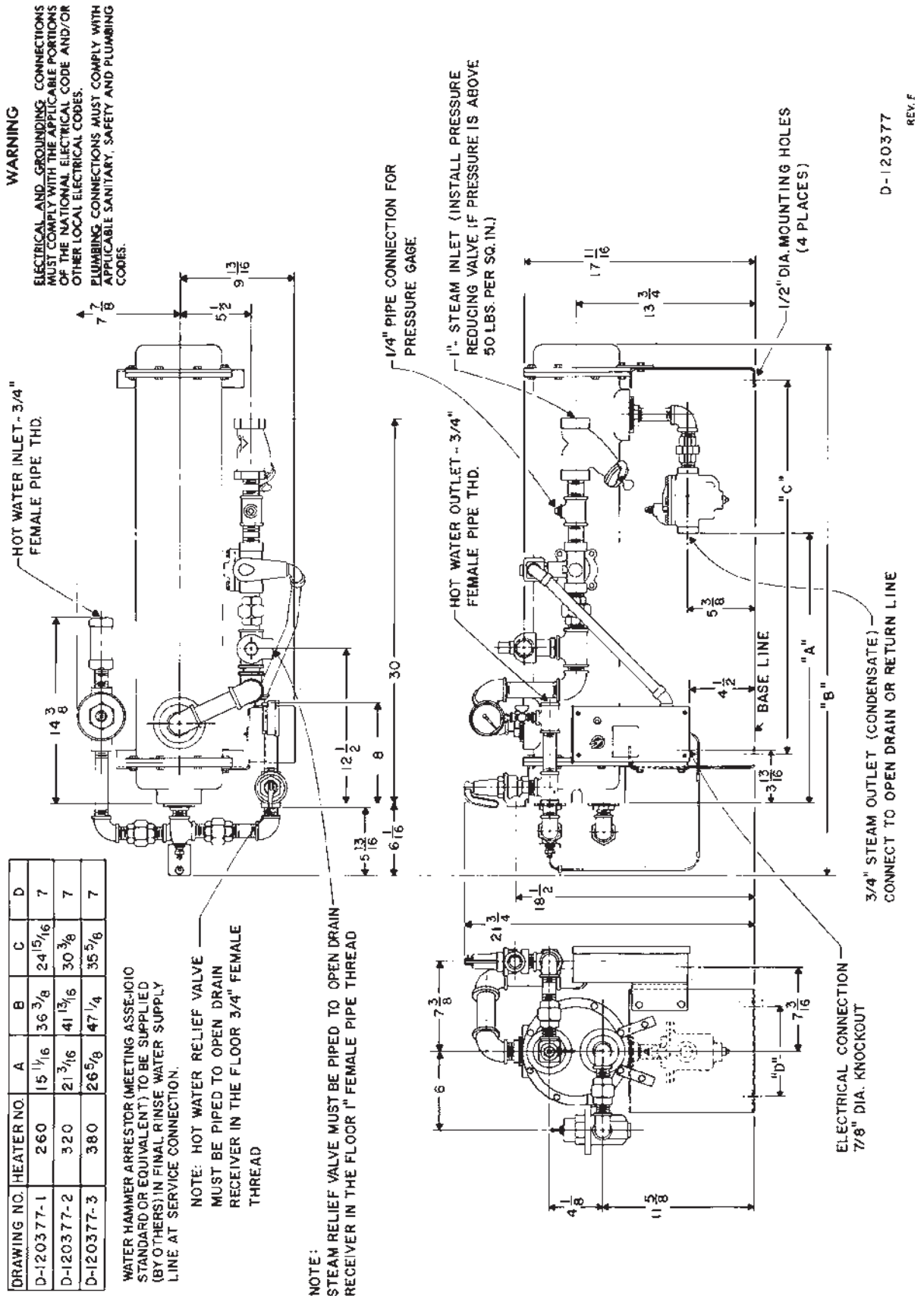
### STEAM BOOSTER HEATER SIZES #180-1



#180 STEAM BOOSTER  
D-120378  
REV. F

## STEAM BOOSTER HEATER SIZES – ALL MODELS

### STEAM BOOSTER HEATER SIZES #260, #320 AND #380



D-120377

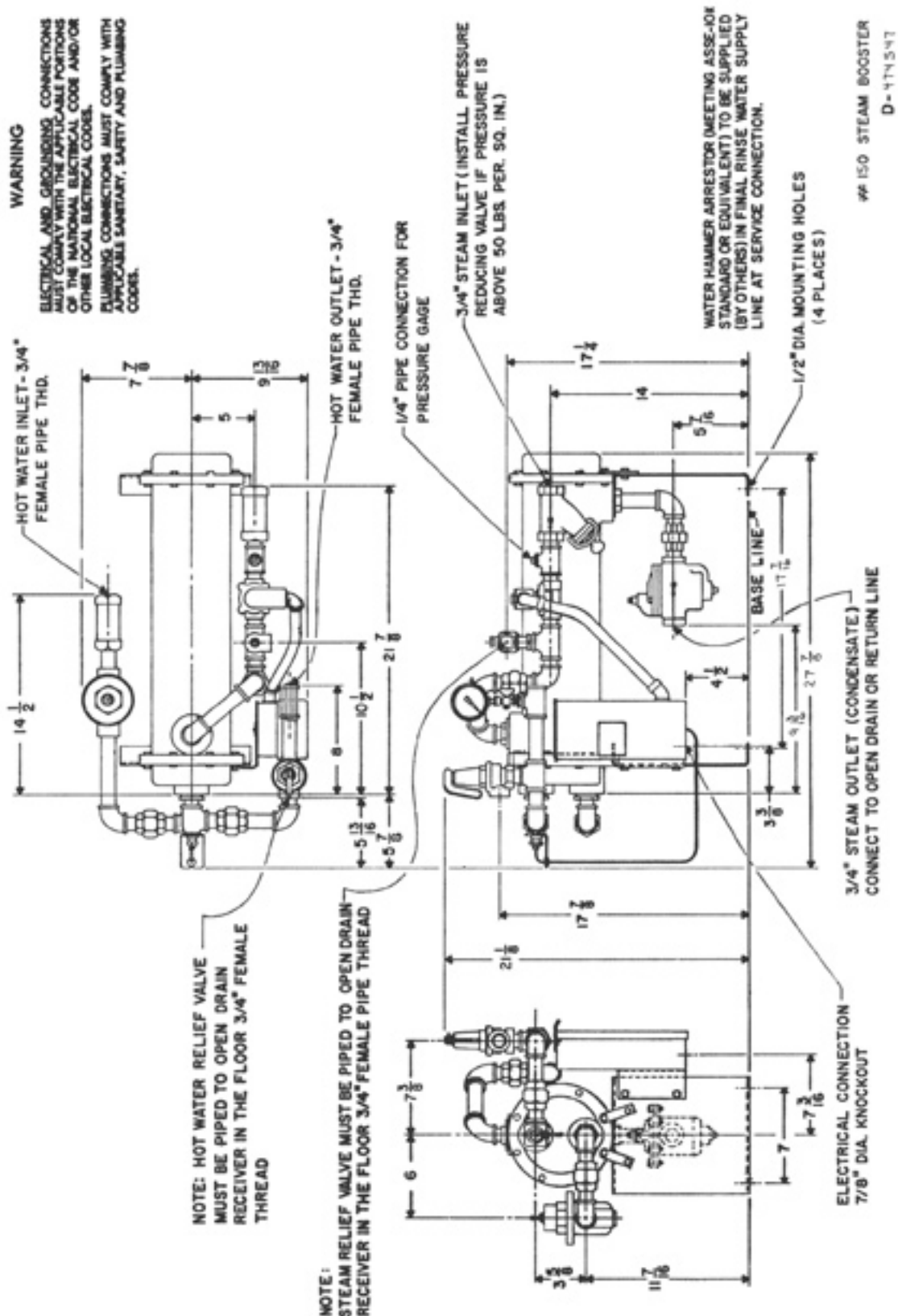
REV. F

# STEAM BOOSTER HEATER SIZES – ALL MODELS

## HOBART

701 S Ridge Avenue, Troy, OH 45374  
1-888-4HOBART • www.hobartcorp.com

### STEAM BOOSTER HEATER SIZES #150



As continued product improvement is a policy of Hobart, specifications are subject to change without notice.