

# DCM-300BAH

## SANITARY CUBELET ICE MACHINE/DISPENSER

Item # \_\_\_\_\_

Project: \_\_\_\_\_

Qty: \_\_\_\_\_

\*AutoCad available on KCL

DCM-300BAH

12/11

Item # 13284

### DIMENSIONS

W x D x H

#### DCM-300BAH

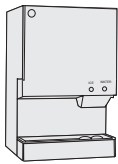
26 x 22<sup>1/2</sup> x 40

#### SD-450

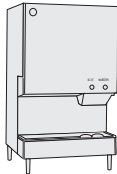
26<sup>1/4</sup> x 22 x 32<sup>1/2</sup>

#### SD-500

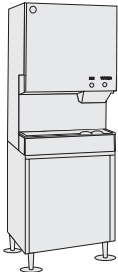
25<sup>9/10</sup> x 22 x 32<sup>3/4</sup>



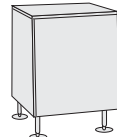
DCM-300  
Countertop



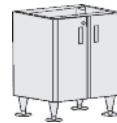
DCM-300  
Countertop  
with optional  
6" legs



DCM-300  
Floor Model  
with optional  
stand



SD-450  
optional  
stand




SD-500  
optional  
stand

### DCM-300BAH

Air-Cooled  
Shown on an optional  
SD-500 Stand



#### DCM-300BAH

- CleanCycle12®. Every 12 hours, unit performs 15 minute purge to rid itself of impurities
- Corrosion resistant stainless steel exterior
- Up to 321 lbs. of ice production per 24 hours, with 40 lbs. built-in storage
- Easy to chew, cubelet ice
- Self contained design reducing opportunities for cross contamination
- Dispenses ice and water
- Protected by *H-GUARD Plus* Antimicrobial Agent 



#### SD-450 Stand / SD-500 Stand

- Heavy duty stand for floor model icemaker/dispenser
- Corrosion resistant stainless steel exterior
- Easy cleaning with attractive appearance
- Locking doors standard on SD-500



ISO9001-15014:2015

#### Warranty

Valid in United States, Canada, Puerto Rico, & U.S. Territories. Contact factory for warranty in other countries.

**Three Year** - Parts & Labor on entire machine. (Serial numbers Vxxxxx) and after.)

**Five Year** - Parts on: Compressor, air-cooled condenser.



# Hoshizaki

## DCM-300BAH SANITARY CUBELET ICE MACHINE/DISPENSER

### DIMENSIONS W x D x H

<b>DCM-300BAH</b>	26 x 22 <sup>1/2</sup> x 40
<b>SD-450</b>	26 <sup>1/4</sup> x 22 x 32 <sup>1/2</sup>
<b>SD-500</b>	25 <sup>9/10</sup> x 22 x 32 <sup>3/4</sup>

- Hands-free ice machine/dispenser
- Optional stand
- Optional stand with locking doors

### AIR-COOLED

Water Temp° F.	50°	70°	90°	
Air Temp° F.	70°	321	307	291
	80°	277	263	249
	90°	237	<b>232</b>	214

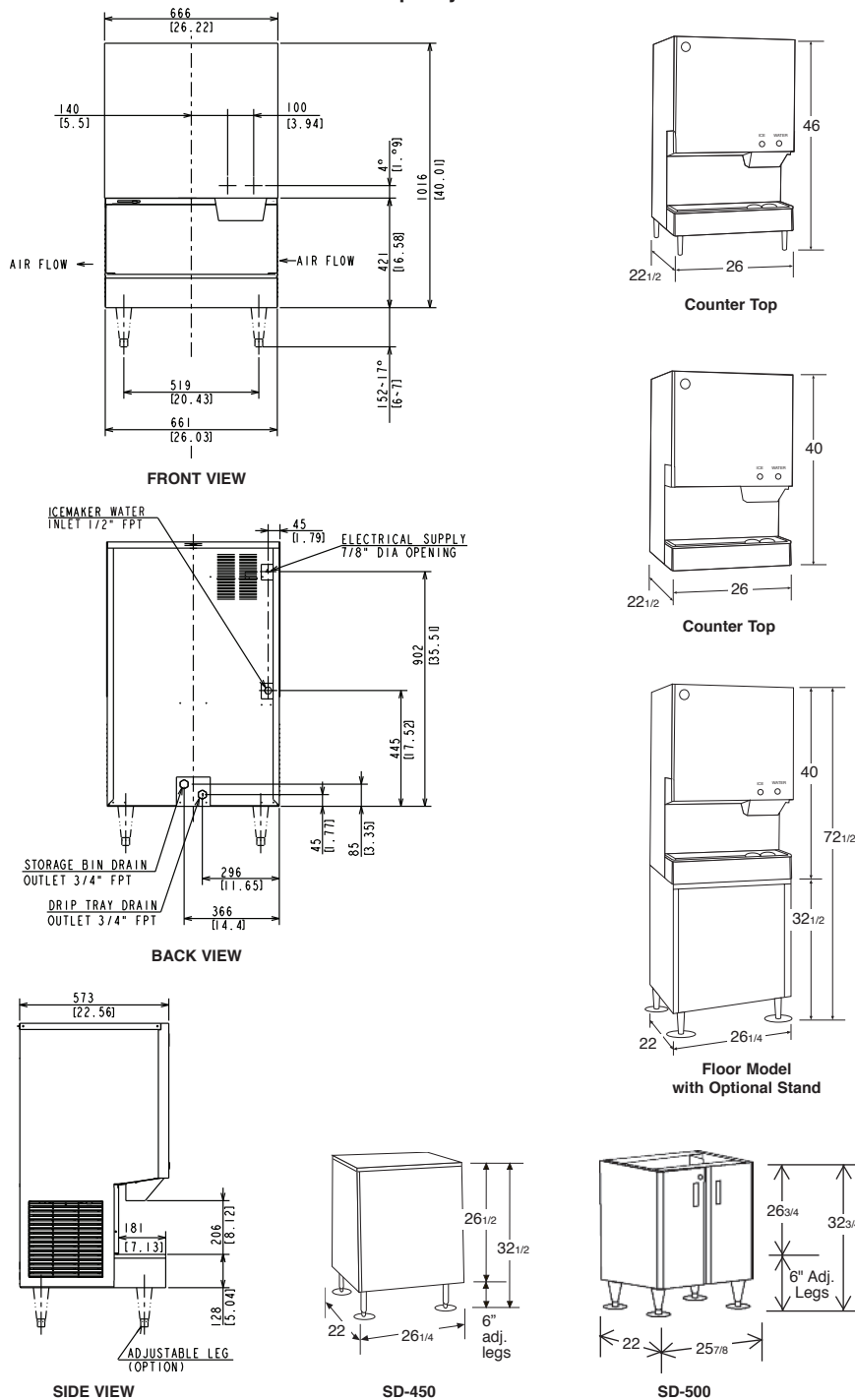
### UTILITY CONSUMPTION

Model Number	KWH per 100 LBS.		Gal. Per 100 LBS.	
	90/70	70/50	90/70	70/50
DCM-300BAH	6.84	4.88	12.5	12.5

### SPECIFICATIONS

Model Number	Condenser	Amperage	Min. Circuit Ampacity	Shipping Weight
DCM-300BAH	Air-Cooled	10.25	20	240 lbs.
SD-450	N/A	N/A	N/A	110 lbs.
SD-500	N/A	N/A	N/A	98 lbs.

### 40 lb. Capacity Built-in Bin



### ELECTRICAL & PLUMBING/DCM-300BAH

- 115V/60/1
- 20 amp Max Fuse Size
- 1/2" FPT Water Inlet
- 3/4" FPT x2 Drain



ISO 9001-15014001

© HOSHIZAKI AMERICA, INC.

618 Hwy. 74 S., Peachtree City, GA 30269

### OPERATING LIMITS

• Ambient Temp Range	45 - 100°F
• Water Temp Range	45 - 90°F
• Water Pressure	10 - 113psig
• Voltage Range	104 - 127V

### SERVICE

- Panels easily removed and all components accessible for service.
- Removable/cleanable air filter. (Air-cooled model only)

TEL 1-800-438-6087

FAX 1-800-345-1325

www.hoshizaki.com

Printed in U.S.A.

