

# KM-515M\_H-P

## SLIM-LINE MODULAR CRESCENT CUBER TAMPER PROOF MODEL

Item # \_\_\_\_\_

Project: \_\_\_\_\_

Qty: \_\_\_\_\_

\*AutoCad available on KCL

KM-515M\_H-P

5/14

Item #13318

### CUBER DIMENSIONS W x D x H

**KM-515M\_H-P**  
22 x 27<sup>3/8</sup> x 30<sup>5/16</sup>



Exterior Fasteners are Tamper Proof Torx Pin Screws



Shown on standard bin for placement only.

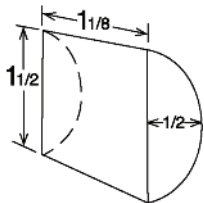
### KM-515MAH-P

Air-Cooled




### KM-515MWH-P

Water-Cooled

### KM CUBE DIMENSIONS



\*\*approximate size in inches, image not to scale

- Up to 527 lbs. of ice production per 24 hours
- Durable stainless steel exterior
- Individual crescent cube
- Protected by H-GUARD Plus Antimicrobial Agent 
- CycleSaver® Design 
- EverCheck® alert system 
- Stainless steel evaporator
- Mount two units side-by-side, in only 44" of floor space, for 1054 lbs. per 24 hours
- Removable air filters located under front panel (Air-cooled models only)
- R-404A Refrigerant

\* The KM-515MAH-P is ENERGY STAR qualified.



### Warranty

Valid in United States, Canada, Puerto Rico, & U.S. Territories. Contact factory for warranty in other countries.

**Three Year** - Parts & Labor on entire machine.

**Five Year** - Parts & Labor on: Evaporator.

**Five Year** - Parts on: Compressor, air-cooled condenser coil.



# Hoshizaki

## KM-515M\_H-P SLIM-LINE MODULAR CRESCENT CUBER

**DIMENSIONS**  
W x D x H  
**KM-515M\_H-P**  
22 x 27<sup>3/8</sup> x 30<sup>3/16</sup>

- Air-cooled
- Water-cooled

### AIR-COOLED

Water Temp ° F.	50°	70°	90°	
Air Temp ° F.	70°	527	504	474
	80°	510	475	444
	90°	504	450	419

### WATER-COOLED

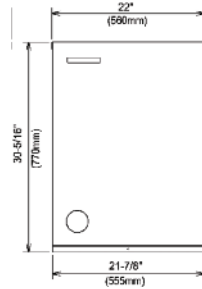
Water Temp ° F.	50°	70°	90°	
Air Temp ° F.	70°	462	457	427
	80°	458	451	407
	90°	457	446	407

### UTILITY CONSUMPTION

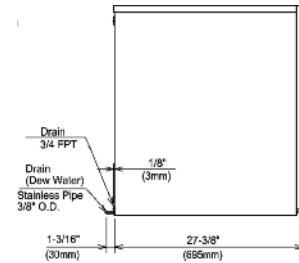
Model Number	Ice Production Per Cycle		KWH per 100 LBS. 90/70	Potable Water Gal. per 100 lbs.	Condenser Water Gal. per 100 lbs.
	Lbs.	Cubes			
KM-515MAH-P	9.8	480	5.9	18.5	N/A
KM-515MWH-P	10.0	480	5.14	23.0	106

### SPECIFICATIONS

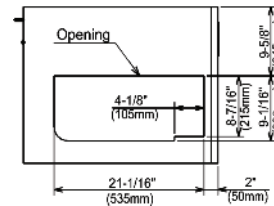
Model Number	Condenser	Amperage	Min. Circuit Ampacity	Shipping Weight
KM-515MAH-P	Air-Cooled	11.7	20	175 lbs.
KM-515MWH-P	Water-Cooled	9.6	20	175 lbs.



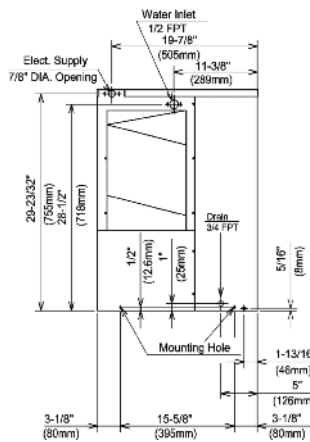
FRONT VIEW



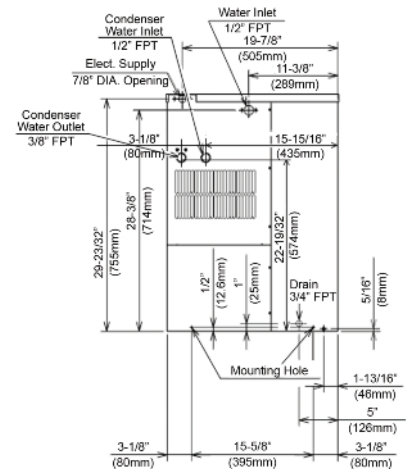
SIDE VIEW



ICE DROP ZONE



AIR-COOLED UNIT



WATER-COOLED UNIT

### ELECTRICAL & PLUMBING/KM-515M\_H-P

- 115V/60/1
- 20 Amp Max Fuse/HACR Breaker Size
- 3/8" OD copper or equivalent independent potable water supply with 1/4" nominal ID minimum
- 3/4" FPT water drain



BSL0001-15C14901

© HOSHIZAKI AMERICA, INC.

618 Hwy. 74 S., Peachtree City, GA 30269

### OPERATING LIMITS

- Ambient Temp Range 45 - 100°F
- Water Temp Range 45 - 90°F
- Water Pressure 10 - 113psig
- Voltage Range 104 - 127V

### SERVICE

- Panels easily removed and all components accessible for service.
- Removable/cleanable air filters under front panel (Air-cooled model only)
- Exterior fasteners are tamper proof torx pin screws.



TEL 1-800-438-6087

FAX 1-800-345-1325

www.hoshizaki.com

Printed in U.S.A.