

GF Series - Reach In Hinged Glass Doors Freezer - Bottom Mount

• PRODUCT SPECIFICATIONS SHEETS



- Cases are designed to operate at 75 degrees Fahrenheit and 55% relative humidity

**Self-Contained
Remote**

**GF22BM
R-GF22BM**

**GF48BM
R-GF48BM**

**GF75BM
R-GF75BM**

**GF102BM
R-GF102BM**

Length

26-1/2"

52-1/4"

78"

103-3/4"

Height

82-1/4"

82-1/4"

82-1/4"

82-1/4"

Depth with drain cover

36-1/2"

36-1/2"

36-1/2"

36-1/2"

(Dimensions are +/-1/4")

- Specification subject to change without notice

GF Series - Reach In Hinged Glass Doors Freezer - Bottom Mount

Standard Specifications and Optional Features

<p>CONSTRUCTION UL Classified to ANSI/NSF 7 Heavy duty construction CFC free foamed in place insulation Removable front grille for easy servicing 1, 2, 3 or 4 door models available Heavy duty edge mounted hinges</p>	<p>FINISHES Doors-Anthony style 101-chrome finish Exterior-designer white Interior-designer white</p>
<p>INTERIOR White aluminum ends and back White aluminum floor Aluminum evaporator fan housing 4 Heavy duty epoxy coated shelves per door Mounted thermometer</p>	<p>REFRIGERATION Bottom mounted condensing unit R404A refrigeration 1, 2, 3, & 4 door-expansion valve Electric condensate pan Remote available</p>
<p>EXTERIOR White aluminum ends and fronts Triple pane glass doors 23-3/4"X62-1/4" <i>(provides wide view display)</i></p>	<p>LIGHTING Vertical light behind mullion 1 Dr = 1 light 2 Dr = 1 light 3 Dr = 2 lights 4 Dr = 3 lights</p>
<p>ELECTRICAL REQUIREMENTS 115V/208-230V/60Hz/1Ph Unit must be hard wired UL/CUL listed</p>	<p>Important Note: <i>All refrigerated cases are designed to operate in an environment of 75 degrees and 55% relative humidity.</i></p> <p>Important Note: <i>Product must be cooled before being displayed within the case.</i></p>

OPTIONAL FEATURES

<p>Stainless steel, laminate, or paint Digital or dial thermometer Door swing change</p>	<p>Extra shelf with clips Door locks 6" legs (black or stainless steel top mount units only)</p>
--	--



GF Series - Reach In Hinged Glass Doors Freezer - Bottom Mount

Technical Data

Model	Self contained	GF22BM	GF48BM	GF75BM	GF102BM
	Remote	R-GF22BM	R-GF48BM	R-GF75BM	R-GF102BM
Length		26-1/2"	52-1/4"	78"	103-3/4"
Height		82-1/4"	82-1/4"	82-1/4"	82-1/4"
Depth with drain cover (Dimensions are +/- 1/4")		36-1/2"	36-1/2 "	36-1/2 "	36-1/2 "
Operating temperature	Self contained	-10°F to 0°F	-10°F to 0°F	-10°F to 0°F	-10°F to 0°F
Refrigerant (expansion valve)	Self contained	R404A	R404A	R404A	R404A
Compressor size- HP		3/4	1-1/2	1-3/4	(2) 1-1/2
Temperature control setting @ 75F at 55%	CUT IN	30	30	30	30
	CUT OUT	10	10	10	10
Defrost per day (24 hours)	Electric	3 @ 30 min.	3 @ 30 min.	3 @ 30 min.	3 @ 30 min.
BTU's at -35°F Evap. Temp.	Remote	2160	4060	5150	8120
Voltage		115/208-230V	115/208-230V	115/208-230V	115/208-230V
Amperage	Self contained	11.8A	4.2/11.0A	5.2/11.8A	8.3/11.0A
Amperage- lights,fan&remote	Remote	N/A	5.6/6.5A	7.4/8.6A	10.4/6.5A
Cord and plug		No	No	No	No
Exterior color		White	White	White	White
Interior color		White	White	White	White
Inside end panels		White	White	White	White
Floors		White	White	White	White
Drain Electric Condensate		Yes	Yes	Yes	Yes
Total shelves		4	8	12	16
Door size		23-3/4"X62-1/4"	23-3/4"X62-1/4"	23-3/4"X62-1/4"	23-3/4"X62-1/4"
Cubic capacity (ft ³)		22	48	75	102

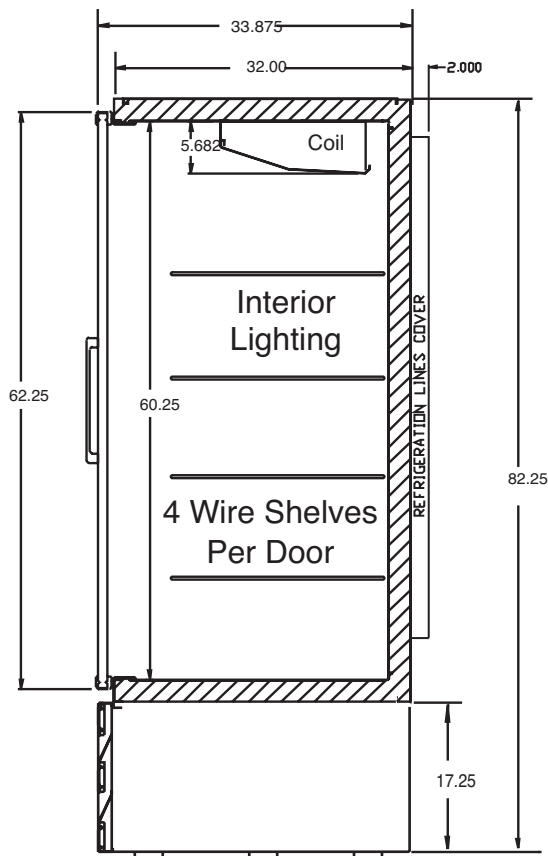
SHIPPING INFORMATION

Height		86"	86"	86"	86"
Depth		44"	44"	44"	44"
Length		31"	58"	84"	109"
Gross weight	Self contained	410#	610#	810#	1184#
	Remote	260#	310#	485#	884#
Cubic feet		77ft ³	125ft ³	182ft ³	236ft ³

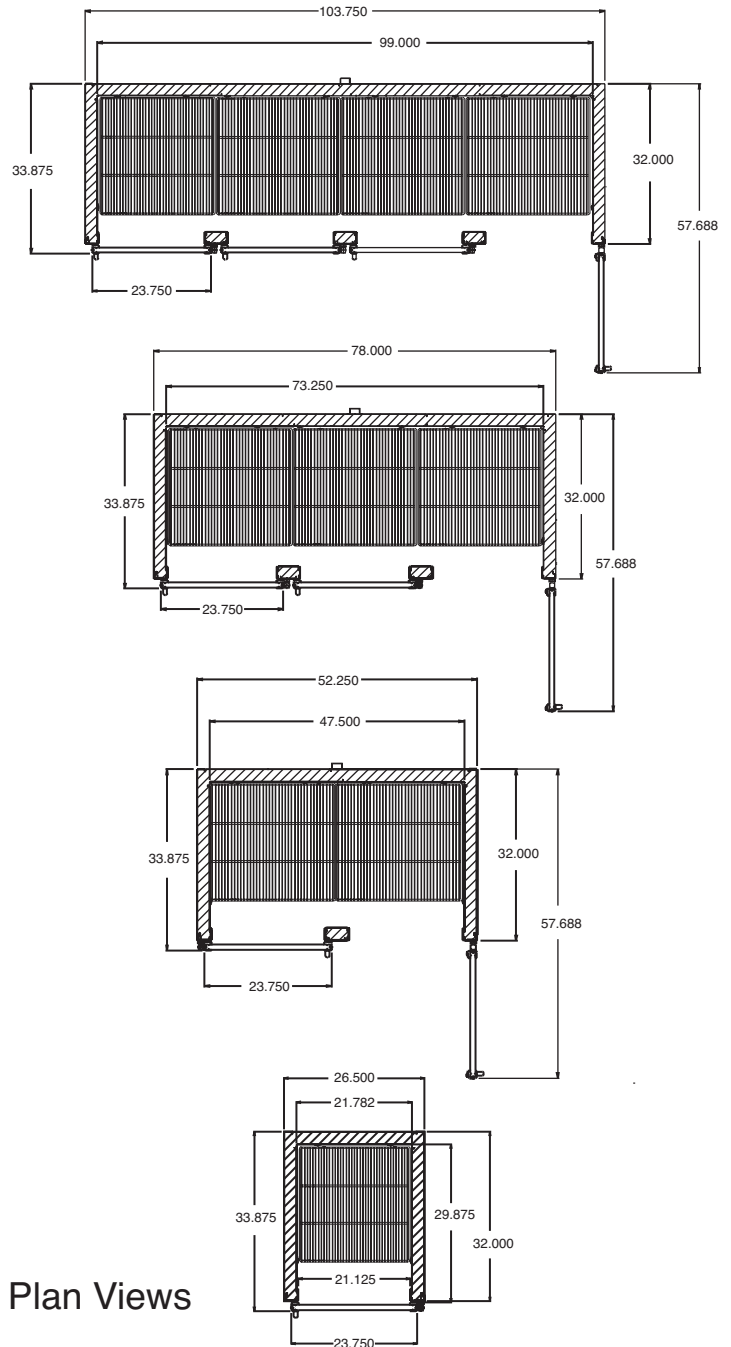
- Cases are designed to operate at 75 degrees Fahrenheit and 55% relative humidity
- Specification subject to change without notice

GF Series - Reach In Hinged Glass Doors Freezer - Bottom Mount

Technical Data • Side View • Plan View



Cross Section



Plan Views