

32E Series - Endless Design Curved Glass - Single Duty - Deli

• PRODUCT SPECIFICATIONS SHEETS



- Cases are designed to operate at 75 degrees Fahrenheit and 55% relative humidity

Self-Contained	SC-CDS32E-4C-LS	SC-CDS32E-6C-LS	SC-CDS32E-8C-LS
Remote	R-CDS32E-4C-LS	R-CDS32E-6C-LS	R-CDS32E-8C-LS
Length with (2) ends	50"	74"	98"
Length without ends	48"	72"	96"
Height with ends	50-1/2"	50-1/2"	50-1/2"
Height without ends	50"	50"	50"
Depth with ends	30-1/2"	30-1/2"	30-1/2"
Depth without ends	30"	30"	30"
Endless Design	YES	YES	YES

(Dimensions are +/- 1/4")

- Specification subject to change without notice

32E Series – Endless Design Curved Glass – Single Duty – Deli

Standard Specifications and Optional Features

<p>CONSTRUCTION UL Classified to ANSI/NSF 7 Foamed in place CFC free foam Double pane coated and insulated curved glass Heavy gauge steel super structure Single duty display Endless design allows for continuous line up Drain is included for cleaning</p>	<p>FINISHES Satin finish extrusion on doors and door tracks Designer white exterior front and ends Stainless steel mirror trim Stainless steel heavy gauge top – 16" W Rear of unit is stainless steel brush finish at top Bottom rear is designer white aluminum</p>
<p>INTERIOR Stainless steel mirrored upper ends Stainless steel heavy gauge lighted mezzanine shelf <i>(1 row)</i> White aluminum floor-main deck area Epoxy coated main deck shelves Air insulated baffle <i>(prevents moisture from dripping into display area)</i></p>	<p>REFRIGERATION Copevap system <i>(eliminates need for condensate pan)</i> R134a expansion valve system Gravity coil located at inside top of unit Self contained system Automatic defrost controlled by time clock-<i>(self contained units only)</i> Pressure control maintains constant temperatures Remotes available</p>
<p>EXTERIOR Double pane rear removable doors Newly designed rear compression door jamb Removable front grille allows for cleaning Removable rear grille for easy servicing 1" removable end panels</p>	<p>LIGHTING 1 Row of T12 lighting at top of unit 1 Row of lighting on mezzanine shelf</p>
<p>ELECTRICAL REQUIREMENTS 115V/60Hz/1Ph Unit must be hard wired UL/CUL listed 115V-12AMP general purpose receptacle <i>(wired separately)</i></p>	<p><i>Important Note: All refrigerated cases are designed to operate in an environment of 75 degrees and 55% relative humidity.</i></p> <p><i>Important Note: Product must be cooled before being displayed within the case.</i></p>

OPTIONAL FEATURES

<p>Stainless steel, laminate or paint Mirrored doors Extra row of mezzanine shelf Digital Thermometer</p>	<p>Front bumper 1" or 3" Ice pans Sandwich rack Door Locks</p>
--	---



32E Series – Endless Design Curved Glass – Single Duty – Deli

Technical Data

Model #	Self contained	SC-CDS32E-4C-LS	SC-CDS32E-6C-LS	SC-CDS32E-8C-LS
	Remote	R-CDS32E-4C-LS	R-CDS32E-6C-LS	R-CDS32E-8C-LS
Length with (2) ends Length without ends Height with ends Height without ends Depth with ends Depth without ends Endless design (Dimensions are +/- 1/4")		50" 48" 50-1/2" 50" 30-1/2" 30" YES	74" 72" 50-1/2" 50" 30-1/2" 30" YES	98" 96" 50-1/2" 50" 30-1/2" 30" YES
Operating temperature Refrigerant (expansion valve) Compressor size HP Pressure control settings @ 75°F, 55%RH Defrost per day (24 hours) BTU's at +20°F Evap. Temp. Voltage Amperage Amperage, lights only Cord and plug	Self contained Self contained CUT IN CUT OUT Air Defrost Remote Self contained Remote	36°F to 40°F R134a 1/4 30 12 1 per day 1400 115V 6.6A 1.4A No	36°F to 40°F R134a 1/3 30 12 1 per day 2100 115V 9.7A 2.2A No	36°F to 40°F R134a 1/2 30 12 1 per day 2800 115V 12.4A 2.8A No
Exterior color Interior color Inside end panels Floors # of top doors Door size # of coils Bottom storage Front Glass # of main deck shelves Main deck size Cubic capacity (ft ³) Mezzanine, 1 row lighted		White Stainless Polish Stainless Bright White 2 20-1/2"X23-1/2" 1 No Curved 2 23-5/8"X25" 23 Standard	White Stainless Polish Stainless Bright White 2 31"X23-1/2" 1 No Curved 3 23-5/8"X25" 34.5 Standard	White Stainless Polish Stainless Bright White 4 20-1/2"X23-1/2" 1 No Curved 4 23-5/8"X25" 46 Standard

SHIPPING INFORMATION

Height		55"	55"	55"
Depth		44"	44"	44"
Length		61"	87"	115"
Gross weight	Self contained Remote	500# 460#	710# 660#	940# 910#
Cubic feet		85ft ³	122ft ³	161ft ³

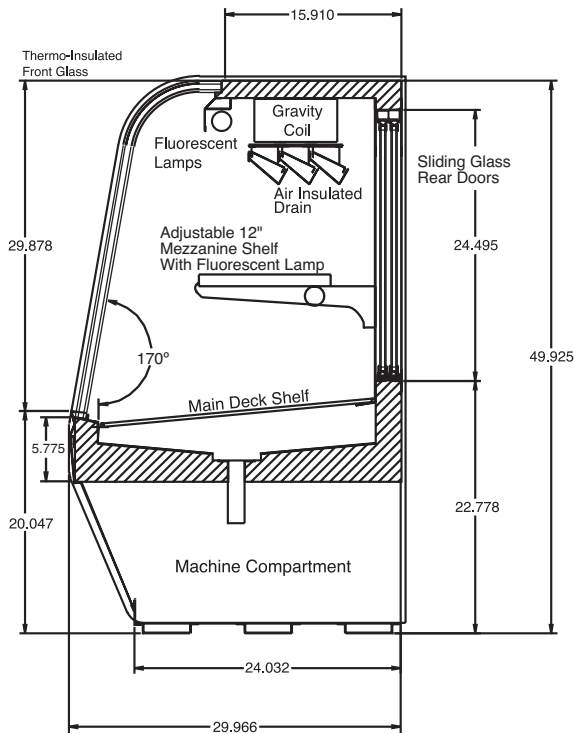
- Cases are designed to operate at 75 degrees Fahrenheit and 55% relative humidity
- Cases are equipped with drains; check your local building codes for connection requirements.
- Specification subject to change without notice

A Division of HMC Enterprises LLC • 2501 Grant Avenue • Philadelphia, PA 19114 USA

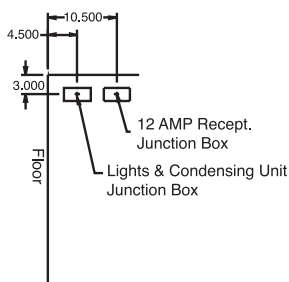
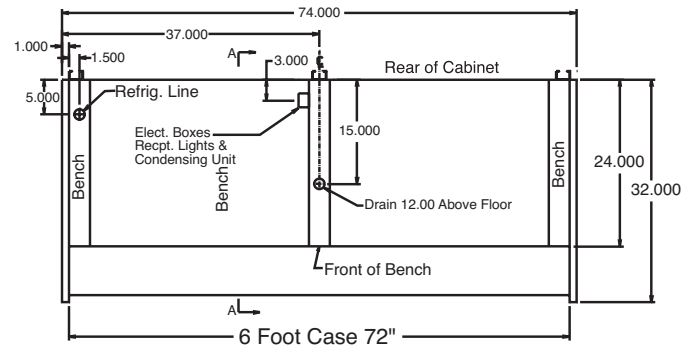
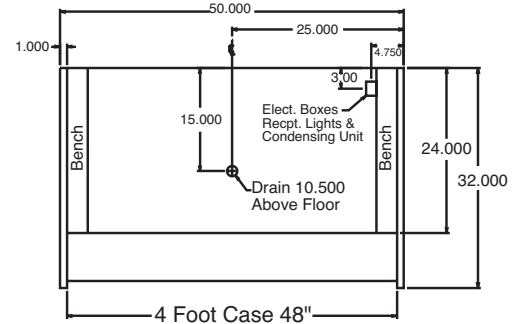
(215) 464-6800 • 1-800-344-8222 • Fax (215) 969-4890 • E-Mail: sales@howardmccray.com • www.howardmccray.com

32E Series – Endless Design Curved Glass – Single Duty – Deli

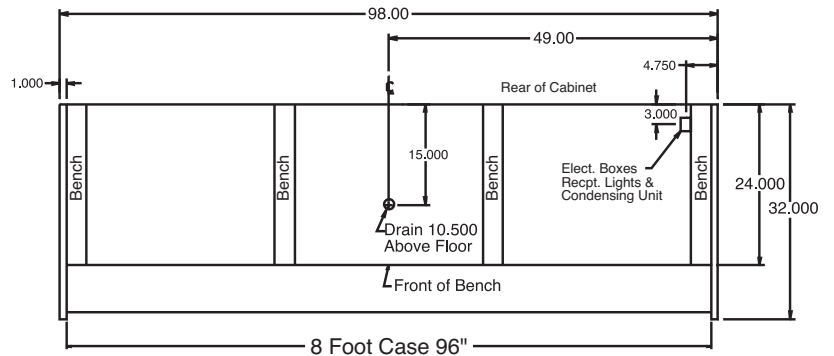
Technical Data • Side View • Plan View



Cross Section



Side View



Plan Views