

## 40E Series - Endless Design Curved Glass - Red Meat

• PRODUCT SPECIFICATIONS SHEETS



- Cases are designed to operate at 75 degrees Fahrenheit and 55% relative humidity

Self-Contained	SC-CMS40E-4C	SC-CMS40E-6C	SC-CMS40E-8C
Remote	R-CMS40E-4C	R-CMS40E-6C	R-CMS40E-8C
Length with (2) ends	51"	75"	99"
Length without ends	48"	72"	96"
Height with ends	53"	53"	53"
Height without ends	52-1/2"	52-1/2"	52-1/2"
Depth with ends	40"	40"	40"
Depth without ends	38-7/8"	38-7/8"	38-7/8"
Endless Design	YES	YES	YES

(Dimensions are +/-1/4")

- Specification subject to change without notice

## 40E Series - Endless Design Curved Glass - Red Meat

### Standard Specifications and Optional Features

<p><b>CONSTRUCTION</b>          UL Classified to ANSI/NSF 7          Foamed in place CFC free foam          Heavy gauge steel super structure          Single duty display          Endless design allows for continuous line up          Drain is included for cleaning          Extra wide double bend curved glass (<i>enhances product display</i>)</p>	<p><b>FINISHES</b>          Grey finish extrusion on doors and door tracks          Designer white exterior front and ends          Trim          Stainless steel heavy gauge top- 13-3/4" W          Rear of unit is stainless steel brush finish at top          Bottom rear is designer white aluminum</p>
<p><b>INTERIOR</b>          Designer white interior ends          White interior          White aluminum floor (main deck area)          Epoxy coated main deck shelves          Air insulated baffle (<i>prevents moisture from dripping into display area</i>)</p>	<p><b>REFRIGERATION</b>          Copevap system eliminates need for condensate pan          R134a expansion valve system          Gravity coil located at inside top of unit          Humidity coil located at main deck          Self contained system          Temperature and defrost electronically controlled          Remotes available</p>
<p><b>EXTERIOR</b>          Double pane rear removable doors          Rear doors use the McGlide door system** (<i>for easy access</i>)          Removable front grille allows for cleaning          Removable rear grille for easy servicing          1-1/2" removable end panels          Front bumper 2"- gray</p>	<p><b>LIGHTING</b>          1 Row of T8 lighting at top of unit</p> <p><b>**McGlide door system is built with a extra tight door jam which helps seal the door tight when closed and prevents cold air from leaving the unit saving energy costs.</b></p>
<p><b>ELECTRICAL REQUIREMENTS</b>          115V/60Hz/1Ph          Hard wired          UL/CUL listed          115V-12AMP general purpose receptacle (<i>wired separately</i>)</p>	<p><b><i>Important Note: All refrigerated cases are designed to operate in an environment of 75 degrees and 55% relative humidity.</i></b></p> <p><b><i>Important Note: Product must be cooled before being displayed within the case.</i></b></p>

### OPTIONAL FEATURES

<p>Scale Stand          Paper cutter          Stainless steel, laminate or paint          Mirrored doors          Stainless steel mezzanine shelf          Red meat bulbs</p>	<p>Drop work shelf          Front bumpers 3"          Door locks          Digital thermometer          Meat platters          Lights for mezzanine shelf</p>
---	--



## 40E Series - Endless Design Curved Glass - Red Meat

### Technical Data

Model #	Self contained	SC-CMS40E-4C	SC-CMS40E-6C	SC-CMS40E-8C
	Remote	R-CMS40E-4C	R-CMS40E-6C	R-CMS40E-8C
Length with (2) ends		51"	75"	99"
Length without ends		48"	72"	96"
Height with ends		53"	53"	53"
Height without ends		52-1/2"	52-1/2"	52-1/2"
Depth with ends		40"	40"	40"
Depth without ends		38-7/8"	38-7/8"	38-7/8"
Endless design (Dimensions are +/- 1/4")		YES	YES	YES
Operating temperature		34°F to 36°F	34°F to 36°F	34°F to 36°F
Refrigerant (expansion valve)	Self contained	R134a	R134a	R134a
Compressor size- HP	Self contained	1/4	1/3	1/2
Electronic control settings @ 75°F, 55%RH		CUT IN 36 CUT OUT 34	36 34	36 34
Defrost per day (24 hours)	Air Defrost	1 per day	1 per day	1 per day
BTU's at +20°F Evap. Temp.	Remote	1400	2100	2800
Voltage		115V	115V	115V
Amperage	Self Contained	6.0A	8.7A	11.2A
Amperage - lights only	Remote	0.8A	1.3A	1.6A
Cord and plug		No	No	No
Exterior color		White	White	White
Interior color		Stainless	Stainless	Stainless
Inside end panels		White	White	White
Floors		White	White	White
# of top doors		2	2	4
Door size				
# of coils		2	2	2
Bottom storage		No	No	No
Front Glass		Curved	Curved	Curved
# of main deck shelves		2	3	4
Shelf size		23-1/2"X32-5/8"	23-1/2"X32-5/8"	23-1/2"X32-5/8"
Cubic capacity (ft <sup>3</sup> )		24.5	36.8	49
Mezzanine- shelf		Optional	Optional	Optional

### SHIPPING INFORMATION

Height		58"	58"	58"
Depth		44"	44"	44"
Length		61"	87"	109"
Gross weight	Self contained	530#	741#	897#
	Remote	497#	693#	832#
Cubic feet		89ft <sup>3</sup>	128ft <sup>3</sup>	164ft <sup>3</sup>

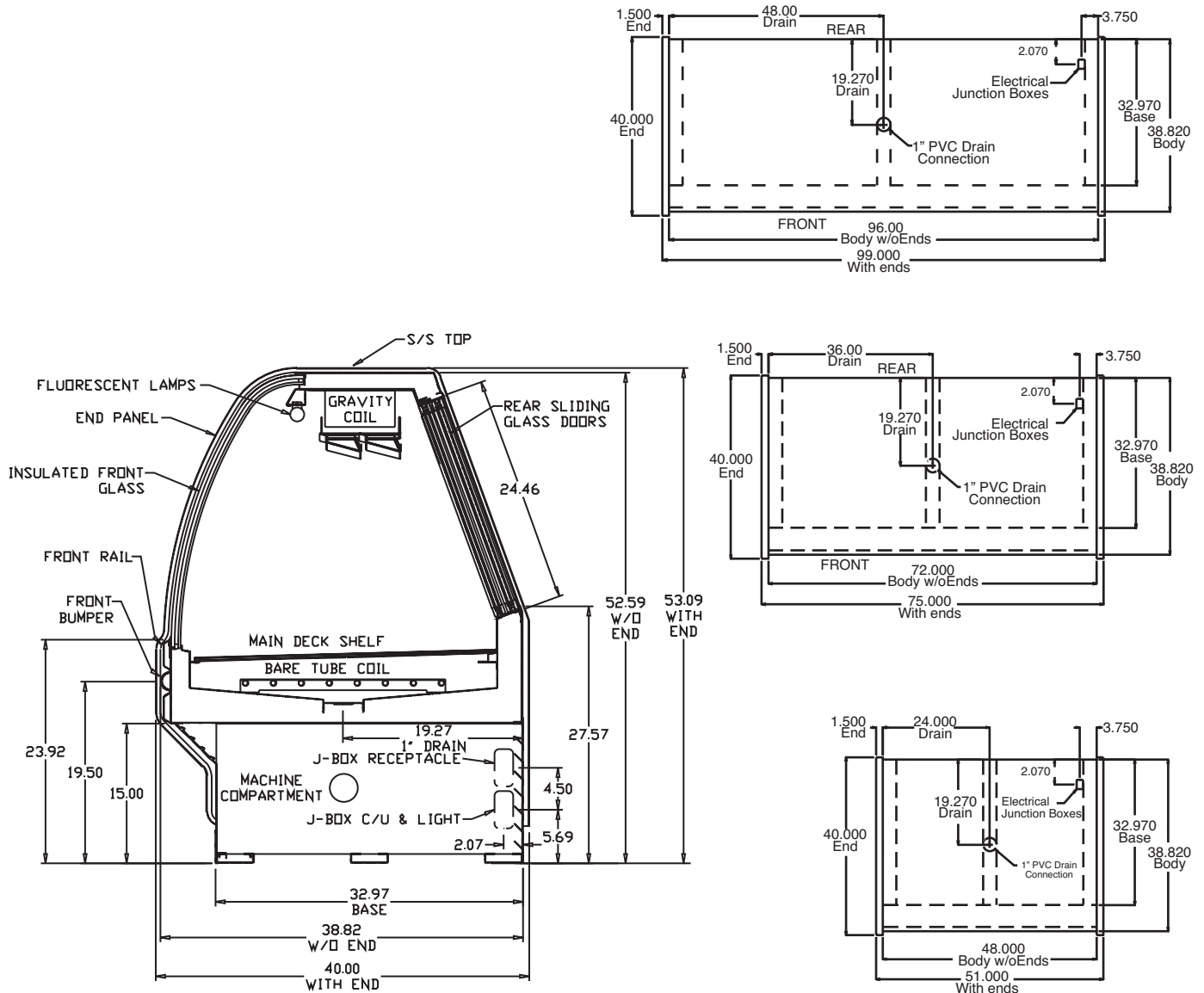
- Cases are designed to operate at 75 degrees Fahrenheit and 55% relative humidity
- Cases are equipped with washout drains; check your local building codes for connection requirements.
- Specification subject to change without notice

**A Division of HMC Enterprises LLC • 2501 Grant Avenue • Philadelphia, PA 19114 USA**

(215) 464-6800 • 1-800-344-8222 • Fax (215) 969-4890 • E-Mail: sales@howardmccray.com • www.howardmccray.com

## 40E Series - Endless Design Curved Glass - Red Meat

### Technical Data • Side View • Plan View



Cross Section

Plan Views