

## 40E Series - Endless Design Single Duty - Red Meat

• PRODUCT SPECIFICATIONS SHEETS



- Cases are designed to operate at 75 degrees Fahrenheit and 55% relative humidity

**Self-Contained  
Remote**

**SC-CMS40E-8  
R-CMS40E-8**

**SC-CMS40E-12  
R-CMS40E-12**

**Length with (2) ends**

100-1/2"

148-1/2"

**Length without ends**

96"

144"

**Height with ends**

53"

53"

**Height without ends**

52-1/2"

52-1/2"

**Depth with ends**

40"

40"

**Depth without ends**

39-1/2"

39-1/2"

**Endless Design**

YES

YES

(Dimensions are +/-1/4")

- Specification subject to change without notice

## 40E Series - Endless Design Single Duty - Red Meat

### Standard Specifications and Optional Features

|   |   |
|---|---|
| <p><b>CONSTRUCTION</b><br/>         UL Classified to ANSI/NSF 7<br/>         Foamed in place CFC free foam<br/>         Triple pane insulated front glass- 28"H<br/>         Heavy gauge steel super structure<br/>         Single duty display<br/>         Endless design allows for continuous line up<br/>         Drain is included for cleaning</p> | <p><b>FINISHES</b><br/>         Satin finish extrusion on doors and door tracks<br/>         Designer white exterior front and ends<br/>         Stainless steel mirror trim<br/>         Stainless steel heavy gauge top- 20" W<br/>         Rear of unit is stainless steel brush finish at top<br/>         Bottom rear is designer white aluminum</p>   |
| <p><b>INTERIOR</b><br/>         Designer white interior ends<br/>         Air insulated baffle (<i>prevents moisture from dripping into display area</i>)<br/>         Epoxy coated main deck shelves</p>   | <p><b>REFRIGERATION</b><br/>         Copevap system (<i>eliminates need for condensate pan</i>)<br/>         R134a expansion valve system<br/>         Gravity coil located at <i>inside top of unit</i><br/>         Self contained system<br/>         Automatic defrost controlled by time clock-<i>(self contained units only)</i><br/>         Pressure control maintains constant temperatures<br/>         Humidity coil located at main deck<br/>         Remotes available</p> |
| <p><b>EXTERIOR</b><br/>         Double pane rear removable doors<br/>         Newly designed compression door jamb<br/>         Removable front grille allows for cleaning<br/>         Removable rear grille for easy servicing<br/>         2-1/4" removable end panels<br/>         Front bumper 1"- gray</p>  | <p><b>LIGHTING</b><br/>         2 Rows of T12 lighting at top of unit</p>   |
| <p><b>ELECTRICAL REQUIREMENTS</b><br/>         115V/60Hz/1Ph<br/>         Unit must be hard wired<br/>         UL/CUL listed<br/>         115V-12AMP general purpose receptacle (<i>wired separately</i>)</p>   | <p><b><i>Important Note: All refrigerated cases are designed to operate in an environment of 75 degrees and 55% relative humidity.</i></b></p> <p><b><i>Important Note: Product must be cooled before being displayed within the case.</i></b></p>  |

### OPTIONAL FEATURES

|   |  |
|---|--|
| <p>Scale Stand<br/>         Paper cutter<br/>         Stainless steel, laminate or paint<br/>         Mirrored doors<br/>         Stainless steel mezzanine shelf<br/>         Red meat bulbs</p> | <p>Drop work shelf<br/>         Front bumpers 3"<br/>         Door locks<br/>         Digital thermometer<br/>         Meat platters</p> |
|---|--|



## 40E Series - Endless Design Single Duty - Red Meat

### Technical Data

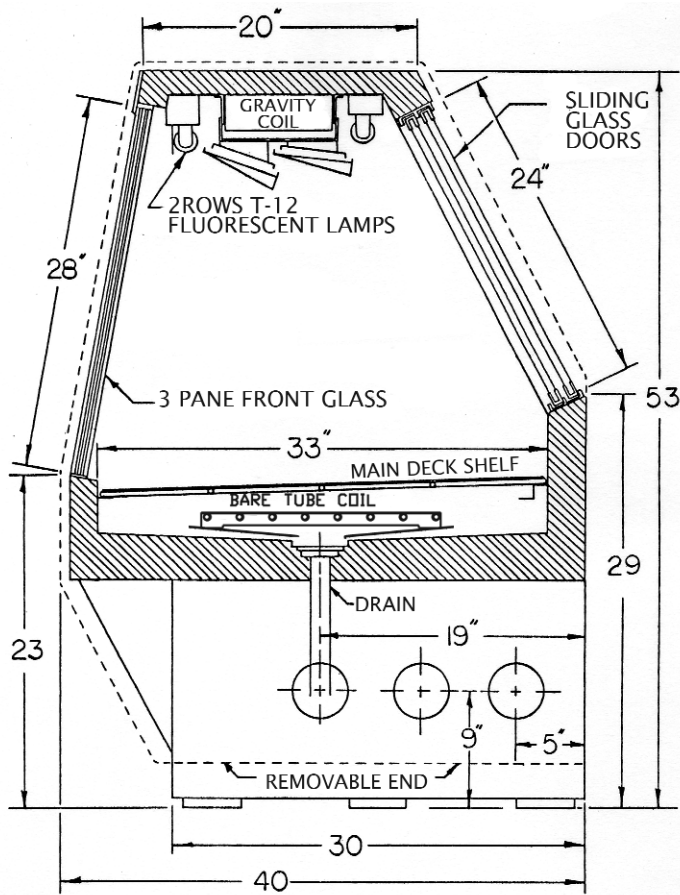
| Model  | Self contained  | SC-CMS40E-8  | SC-CMS40E-12  |
|--|---|--|---|
|  | Remote  | R-CMS40E-8   | R-CMS40E-12   |
| Length with (2) ends<br>Length without ends<br>Height with ends<br>Height without ends<br>Depth with ends<br>Depth without ends<br>Endless design<br>(Dimensions are +/- 1/4")   |   | 100-1/2"<br>96"<br>53"<br>52-1/2"<br>40"<br>39-1/2"<br>YES   | 148-1/2"<br>144"<br>53"<br>52-1/2"<br>40"<br>39-1/2"<br>YES   |
| Operating temperature<br>Refrigerant (expansion valve)<br>Compressor size- HP<br>Pressure control settings<br>@ 75°F, 55%RH<br><br>Defrost per day (24 hours)<br>BTU's at +20°F Evap. Temp.<br>Voltage<br>Amperage<br>Amperage- lights only<br>Cord and plug | Self contained<br>Self contained<br><br>Air Defrost<br>Remote<br><br>Self Contained<br>Remote | 34°F to 36°F<br>R134a<br>1/2<br><br>30<br>12<br>1 per day<br>2800<br>115V<br>11.2A<br>1.6A<br>No                                   | 34°F to 36°F<br>R134a<br>3/4<br><br>30<br>12<br>1 per day<br>4200<br>115V<br>17.4A<br>2.4A<br>No                                |
| Exterior color<br>Interior color<br>Inside end panels<br>Floors<br># of top doors<br>Door size<br># of coils<br>Bottom storage<br>Front glass<br># of main deck shelves<br>Shelf size<br>Cubic capacity (ft <sup>3</sup> )<br>Mezzanine- shelf               |   | White<br>Stainless<br>White<br>White<br>4<br>20-1/2"X23-1/2"<br>2<br>No<br>28"X94-11/16"<br>4<br>23-1/2"X32-5/8"<br>49<br>Optional | White<br>Stainless<br>White<br>White<br>4<br>31"X23-1/2"<br>2<br>No<br>28"X142-11/16"<br>6<br>23-1/2"X32-5/8"<br>74<br>Optional |

### SHIPPING INFORMATION

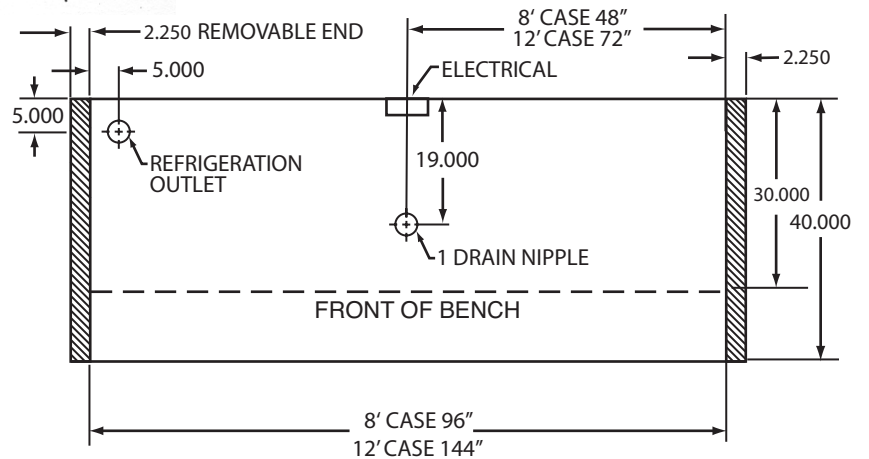
|              |                          |                    |                    |
|--------------|--------------------------|--------------------|--------------------|
| Height       |                          | 58"                | 58"                |
| Depth        |                          | 47"                | 47"                |
| Length       |                          | 109"               | 157"               |
| Gross weight | Self contained<br>Remote | 983#<br>890#       | 1396#<br>1325#     |
| Cubic feet   |                          | 170ft <sup>3</sup> | 245ft <sup>3</sup> |

- Cases are designed to operate at 75 degrees Fahrenheit and 55% relative humidity
- Cases are equipped with washout drains; check your local building codes for connection requirements.
- Specification subject to change without notice

## Technical Data • Side View • Plan View



Cross Section



Plan View