

## 32E Series - Endless Design Curved Glass - Single Duty - Red Meat

• PRODUCT SPECIFICATIONS SHEETS



Picture shows condensing unit on opposite side

- Cases are designed to operate at 75 degrees Fahrenheit and 55% relative humidity

Self-Contained Remote	SC-CMS32E-4C R-CMS32E-4C	SC-CMS32E-6C R-CMS32E-6C	SC-CMS32E-8C R-CMS32E-8C
Length with (2) ends	50"	74"	98"
Length without ends	48"	72"	96"
Height with ends	50-1/2"	50-1/2"	50-1/2"
Height without ends	50"	50"	50"
Depth with ends	30-1/2"	30-1/2"	30-1/2"
Depth without ends	30"	30"	30"
Endless Design	YES	YES	YES

(Dimensions are +/- 1/4")

- Specification subject to change without notice

## 32E Series – Endless Design Curved Glass – Single Duty – Red Meat

### Standard Specifications and Optional Features

<p><b>CONSTRUCTION</b>          UL Classified to ANSI/NSF 7          Foamed in place CFC free foam          Double pane coated and insulated curved glass          Heavy gauge steel super structure          Single duty display          Endless design allows for continuous line up          Drain is included for cleaning</p>	<p><b>FINISHES</b>          Satin finish extrusion on doors and door tracks          Designer white exterior front and ends          Stainless steel mirror trim          Stainless steel heavy gauge top – 16" W          Rear of unit is stainless steel brush finish at top          Bottom rear is designer white aluminum</p>
<p><b>INTERIOR</b>          Stainless steel mirrored upper ends          White aluminum floor (<i>main deck area</i>)          Epoxy coated main deck shelves          Air insulated baffle (<i>prevents moisture from dripping into display area</i>)</p>	<p><b>REFRIGERATION</b>          Copevap system (<i>eliminates need for condensate pan</i>)          R134a expansion valve system          Gravity coil located at inside top of unit          Humidity coil located at main deck (<i>provides extra humidity</i>)          Self contained system          Automatic defrost controlled by time clock-(<i>self contained units only</i>)          Pressure control maintains constant temperatures          Remotes available</p>
<p><b>EXTERIOR</b>          Double pane rear removable doors          Newly designed rear compression door jamb          Removable front grille allows for cleaning          Removable rear grille for easy servicing          1" removable end panels</p>	<p><b>LIGHTING</b>          1 Row of T12 lighting at top of unit</p>
<p><b>ELECTRICAL REQUIREMENTS</b>          115V/60Hz/1Ph          Unit must be hard wired          UL/CUL listed          115V-12AMP general purpose receptacle (<i>wired separately</i>)</p>	<p><b><i>Important Note: All refrigerated cases are designed to operate in an environment of 75 degrees and 55% relative humidity.</i></b></p> <p><b><i>Important Note: Product must be cooled before being displayed within the case.</i></b></p>

### OPTIONAL FEATURES

<p>Stainless steel, laminate or paint          Mirrored doors          Stainless steel heavy gauge mezzanine shelf          Digital Thermometer          Door Locks</p>	<p>Meat platters          Red meat bulbs          Front bumpers 1" or 3"</p>
---	--



## 32E Series – Endless Design Curved Glass – Single Duty – Red Meat

### Technical Data

Model #	Self contained	SC-CMS32E-4C	SC-CMS32E-6C	SC-CMS32E-8C
	Remote	R-CMS32E-4C	R-CMS32E-6C	R-CMS32E-8C
Length with (2) ends Length without ends Height with ends Height without ends Depth with ends Depth without ends Endless design (Dimensions are +/- 1/4")		50" 48" 50-1/2" 50" 30-1/2" 30" YES	74" 72" 50-1/2" 50" 30-1/2" 30" YES	98" 96" 50-1/2" 50" 30-1/2" 30" YES
Operating temperature Refrigerant (expansion valve) Compressor size HP Pressure control settings @ 75°F, 55%RH  Defrost per day (24 hours) BTU's at +20°F Evap. Temp. Voltage Amperage Amperage, lights only Cord and plug	Self contained Self contained  CUT IN CUT OUT Air Defrost Remote  Self contained Remote	34°F to 36°F R134a 1/4  30 12 1 per day 1400 115V 6.0A 0.8A No	34°F to 36°F R134a 1/3  30 12 1 per day 2100 115V 9.1A 1.6A No	34°F to 36°F R134a 1/2  30 12 1 per day 2800 115V 11.2A 1.6A No
Exterior color Interior color Inside end panels Floors # of top doors Door size # of coils Bottom storage Front Glass # of main deck shelves Main deck size Cubic capacity (ft <sup>3</sup> ) Mezzanine, 1 row lighted		White Stainless Polish Stainless Bright White 2 20-1/2"X23-1/2" 2 No Curved 2 23-5/8"X25" 23 Optional	White Stainless Polish Stainless Bright White 2 31"X23-1/2" 2 No Curved 3 23-5/8"X25" 34.5 Optional	White Stainless Polish Stainless Bright White 4 20-1/2"X23-1/2" 2 No Curved 4 23-5/8"X25" 46 Optional

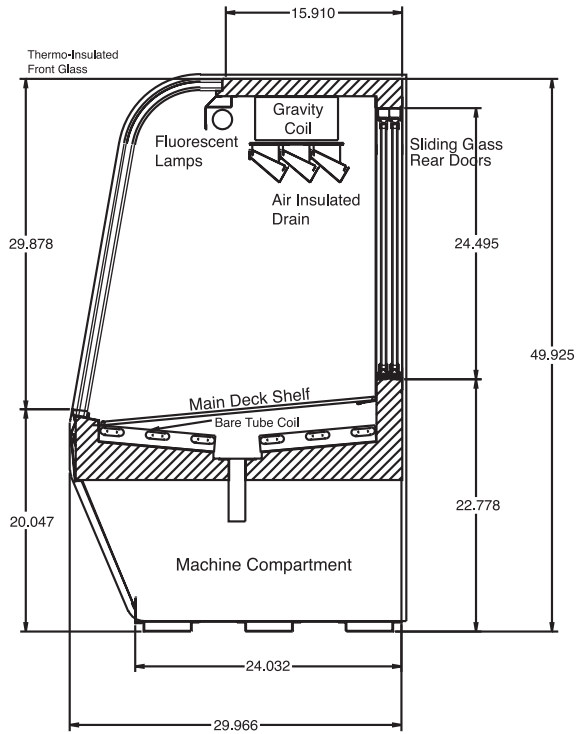
### SHIPPING INFORMATION

Height		55"	55"	55"
Depth		44"	44"	44"
Length		61"	87"	115"
Gross weight	Self contained Remote	500# 460#	710# 660#	940# 910#
Cubic feet		85ft <sup>3</sup>	122ft <sup>3</sup>	161ft <sup>3</sup>

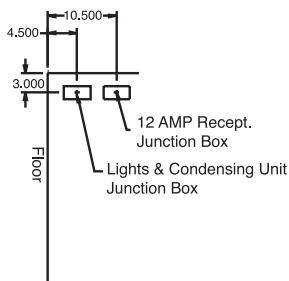
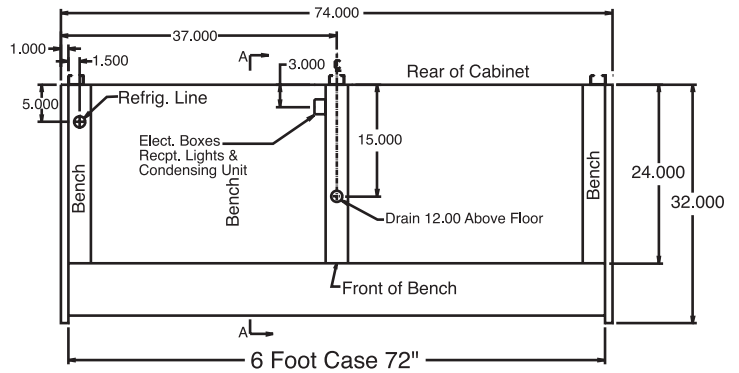
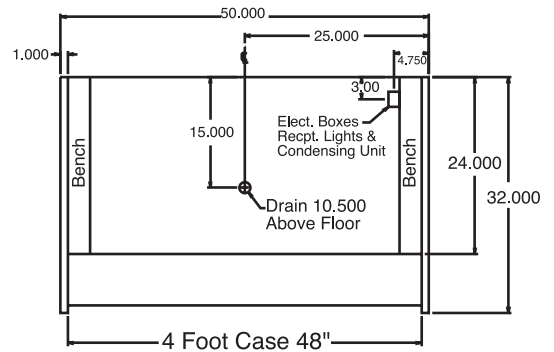
- Cases are designed to operate at 75 degrees Fahrenheit and 55% relative humidity
- Cases are equipped with drains; check your local building codes for connection requirements.
- Specification subject to change without notice

## 32E Series – Endless Design Curved Glass – Single Duty – Red Meat

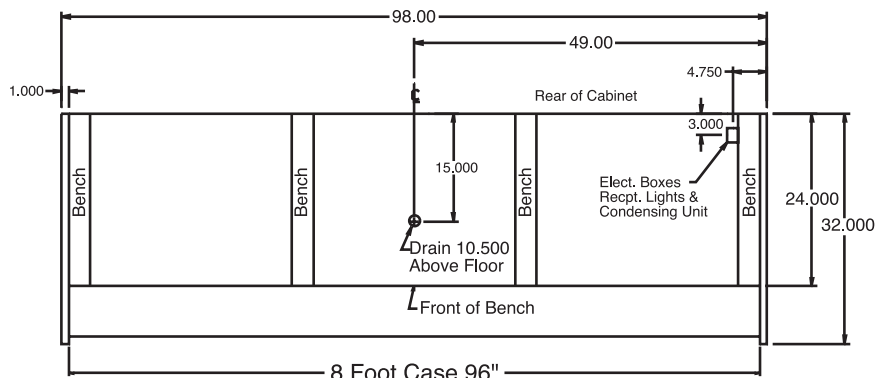
### Technical Data • Side View • Plan View



Cross Section



Side View



Plan Views