

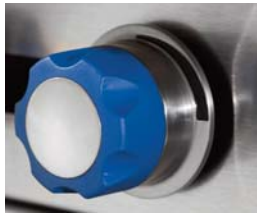
Model Number
IHPA-2-12-E
IHPA-4-24-E
IHPA-6-36-E
IHPA-8-48-E
IHPA-10-60-E



9" (229 mm) sealed round plate elements with easy to clean flat surface.



Large 5" (127 mm) stainless steel landing ledge for convenient plating.



Durable cast aluminum with a vylox heat protection grip.



IHPA-6-36-E shown

ROUND PLATE ELEMENTS - 2 KW round plate elements with easy-to-clean flat surface.

- Provides a solid flat surface for fast, even heating.
- Plates are 9" (229) diameter for maximum pan contact.
- Solid top prevents spills from entering unit making clean-up easy.
- Infinite heat controls for maximum cooking flexibility.

EXTERIOR FEATURES - Stainless steel front, top and sides for cleanability and professional look.

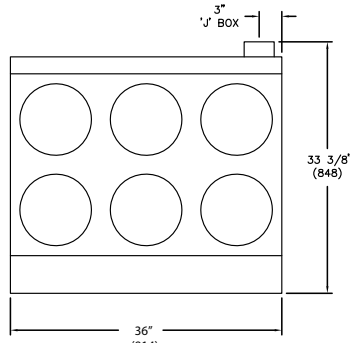
- Welded and polished stainless steel seams.
- Range Match profile when placed on a refrigerated base or equipment stand.
- Large 5" (127 mm) stainless steel landing ledge is ideal for plating.
- Control knobs are durable cast aluminum with a vylox have a heat protection grip.
- 4" (102 mm) heavy duty legs with adjustable feet.
- One year parts and labor warranty.



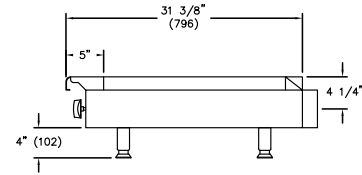
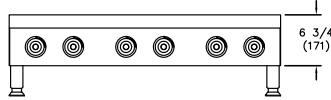


HOT PLATES 31-3/8" DEPTH ELECTRIC ROUND PLATES

IMPERIAL®



IHPA-6-36-E



ELECTRIC HOT PLATES - 31-3/8" (797 MM) DEPTH

TOP	WIDTH	MODEL	ROUND ELEMENTS	TOTAL KW	SHIP WEIGHT (KG)	SHIP WEIGHT (LBS)
	12" (305 mm)	IHPA-2-12-E	2	4	(37)	80
	24" (610 mm)	IHPA-4-24-E	4	8	(64)	140
	36" (914 mm)	IHPA-6-36-E	6	12	(95)	210
	48" (1219 mm)	IHPA-8-48-E	8	16	(123)	270
	60" (1524 mm)	IHPA-10-60-E	10	20	(147)	325

Measurements in () are metric equivalents.

MODEL	DIMENSIONS	CRATED DIMENSIONS
IHPA-2-12-E	12" w x 31-3/8" d x 10-3/4" h (305 x 797 x 273 mm)	14-1/2" w x 35" d x 12" h (368 x 889 x 324 mm)
IHPA-4-24-E	24" w x 31-3/8" d x 10-3/4" h (610 x 797 x 273 mm)	26-1/2" w x 35" d x 12" h (673 x 889 x 324 mm)
IHPA-6-36-E	36" w x 31-3/8" d x 10-3/4" h (914 x 797 x 273 mm)	38-1/2" w x 35" d x 12" h (978 x 889 x 324 mm)
IHPA-8-48-E	48" w x 31-3/8" d x 10-3/4" h (1219 x 797 x 273 mm)	50-1/2" w x 35" d x 12" h (1283 x 889 x 324 mm)
IHPA-10-60-E	60" w x 31-3/8" d x 10-3/4" h (1524 x 797 x 273 mm)	62-1/2" w x 35" d x 12" h (1588 x 889 x 324 mm)

CLEARANCE REQUIREMENTS

For use only on non-combustible surfaces. Provide 0" clearance from non-combustible surfaces and 8" (203 mm) from combustible surfaces.

ELECTRICAL REQUIREMENTS

Model	Total KW	Volts	Ph	Amps
IHPA-2-12-E	4	208	1	19.23
	4	208	3	11.12
	4	240	1	16.67
	4	240	3	9.63
IHPA-4-24-E	4	480*	3	4.82
	8	208	1	38.46
	8	208	3	22.23
	8	240	1	33.33
IHPA-6-36-E	8	240	3	19.27
	8	480*	3	9.63
	12	208	1	57.69
	12	208	3	33.35
IHPA-8-48-E	12	240	1	50
	12	240	3	28.9
	12	480*	3	14.45
	16	208	1	76.92
IHPA-10-60-E	16	208	3	44.46
	16	240	1	66.67
	16	240	3	38.54
	16	480*	3	19.27
IHPA-10-60-E	20	208	1	96.15
	20	208	3	55.58
	20	240	1	83.33
	20	240	3	48.17
	20	480*	3	24.08

* For export only, additional charge.

OPTIONS AND ACCESSORIES

- Stainless steel equipment stands
- 6" (152 mm) casters for equipment stands
- 480 volts (additional charge)



1128 Sherborn Street Corona, CA 92879
800.343.7790 Ph: 951.281.1830 Fx: 951.281.1879
www.imperialrange.com
E-mail: imperialsales@imperialrange.com