

SERIES I 6" ROTOR

COMMERCIAL FOOD WASTE DISPOSER



DESIGN

Series "I" with 6" rotor has no floor support. It is designed primarily for the small restaurant kitchen or for the larger kitchen's salad preparation area. This smaller model is made with the same rugged construction as the larger models. This is the ideal disposer for a small church, small snackbar, or small elementary school, where food waste volume is light. Standard 1 HP motor is recommended.

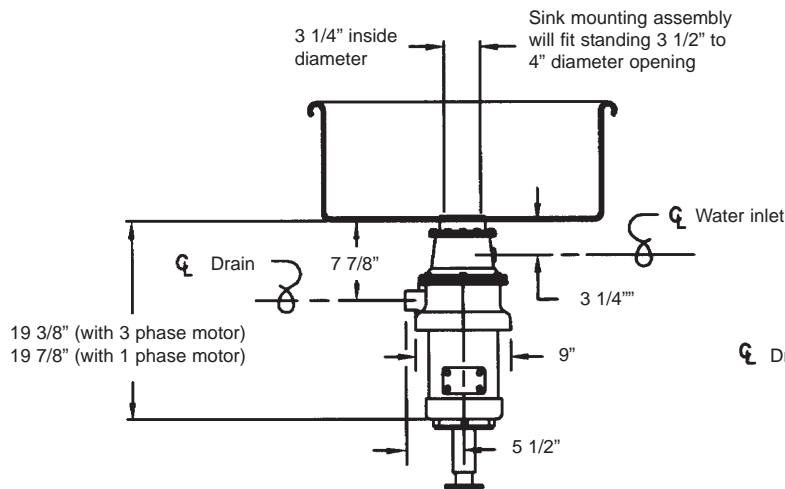
STANDARD EQUIPMENT

- 1 HP motor

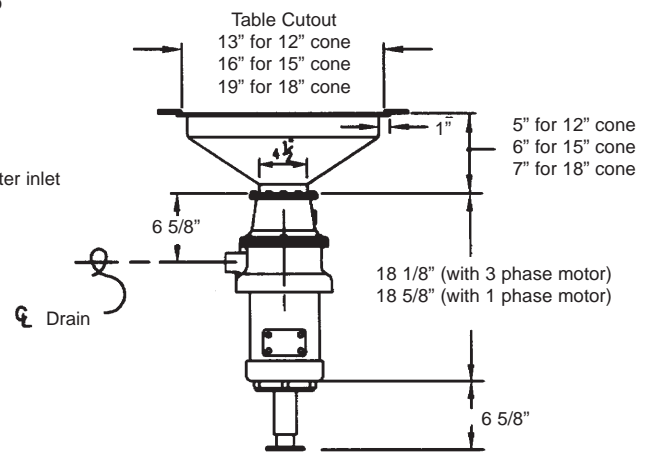
OPTIONAL EQUIPMENT

- Stainless steel cone or sink attachment (includes vinyl silver trap ring, solenoid valve, flow control valve, vacuum breaker)
- 3/4 HP motor- lighter duty
- Cones 12", 15" & 18"

NOTE: Sink attachments and s/s cones need to be welded into table



Disposer shown with sink mounting assembly



Disposer shown with cone mounting assembly

Note: For all rough in connections see Installation and Layout Detail Drawing

DESIGN AND CONSTRUCTION

- Waste chamber design permits dual directional operation when used with reversing control or switch, doubling the life cycle of the shattering mechanism.
- Basic body components are cast gray iron, machined, primed and painted. 6" diameter rotor with (2) cast-on impact bars and sizing ring are cast ductile iron, machined, balanced and heat treated.
- Flexible drain connector. Fastens quickly to either metal or PVC drain line (1 1/2" pipe size).
- Disposer suspends from cone or sink assembly.
- Center support leg (2" height adjustment). (Optional)

MOTOR

- Reversing, continuous duty, 1725 RPM (1425 RPM, 50 Hz), full rated horsepower, double sealed, permanently lubricated ball bearings.
- Thermal overload protection with manual reset button.
- Available for single phase or three phase installations.
- Available in 3/4 and 1 horsepower, single and three phase.
- Dual voltage windings allow multi-voltage operation by motor lead connection. (See motor wiring diagram)
 - 115-230 Volts, 60Hz; 1 Phase
 - 208-230/460 Volts, 60 Hz; 3 Phase

(See table for ampere draw per horsepower, volts & phase)

CONTROLS

Electrical switches or control centers not included, must be selected as required.

Note: All plumbing and electrical connections should be made according to local codes.

HP	SINGLE PHASE		THREE PHASE	
	Volts	Amps*	Volts	Amps*
3/4	115	5.4	208	2.8
	230	10.8	230	2.8
			460	1.4
1	115	12.8	208	3.6
	230	6.4	230	3.6
			460	1.8

*Ratings are for 60 Hz operation.