

Trays are pulled through the Power Scraper by a variable speed belt while being blasted with cold water. The vertical spray pattern provides efficient scrapping.

POWER SCRAPER

AUTOMATIC SCRAPER

DESIGN

Automatic scraper removes soil from compartment trays at a typical processing rate of 1000 trays per hour. No more banging or breakage! The high pressure cold water spray blasts soil from tray compartments. No heat source is required. The Power Scraper is a stand alone item and is designed to scrap trays before washing and sanitizing in a separate tray washer or dishwasher. The variable speed drive can be adjusted for the level of debris on the trays. No venting is required.

The Power Scraper is the perfect companion for the Insinger Tray Washer and Tray Dryer or standard warewashing equipment.

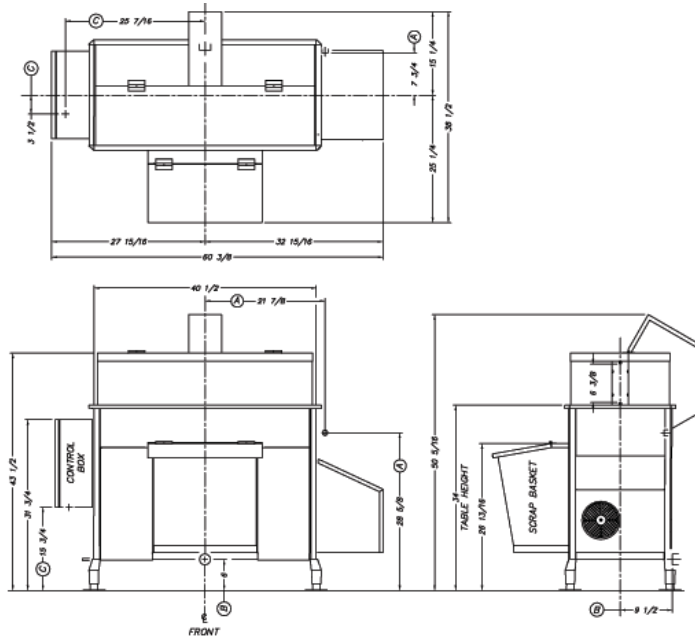
STANDARD EQUIPMENT

- 5 hp pump (50 psi spray)
- Vertical spray system
- Heavy and durable s/s construction
- S/S frame, legs and feet
- SureFire Start-Up & Check-Out Service
- Oversized scrap basket
- Sensors for scrap basket in place
- Automatic tank fill
- Low water protection
- Side mounted NEMA 4X control enclosure
- Standard frame TEFC motors
- Inspection lids
- Vacuum breaker on incoming water line
- Single point electrical connection for motors and controls

OPTIONAL EQUIPMENT

- Tables
- Tray carriers (lot of 10)
- Security package
 - Hasp and lock on all lids
 - Perforated cover on control panel
 - Cover for cold water fill
 - Undermesh
- (Additional) Scrap baskets

NSF



Note: For all rough in connections see Installation and Layout Detail Drawing

SPECIFICATIONS

CONSTRUCTION- 16 gauge, 18-8 type 304 stainless steel. S/S frame, legs and feet.

LIDS- 16 gauge, 18-8 type 304 stainless steel

CONVEYORS- 3 variable-speed urethane belts

MOTOR- 1/8 hp conveyor motor, variable-speed

PUMP- 5 hp, TEFC

CONTROLS- NEMA 4X enclosure, 16" x 16" x 6"

SPRAY SYSTEM- 10 nozzles on 5 vertical arms (2 each). 50 psi 70 gal/min.

DRAIN- 1 1/2" FIPS

Capacity per hour	Pump	Current draw amps	
Typical rate of 1,000 9" trays per hour.	5 hp pump	208/3/60	18.1 FLA
		230/3/60	16.5 FLA
		460/3/60	8.2 FLA