



CONTROL CENTER MODEL MS

SPECIFICATIONS

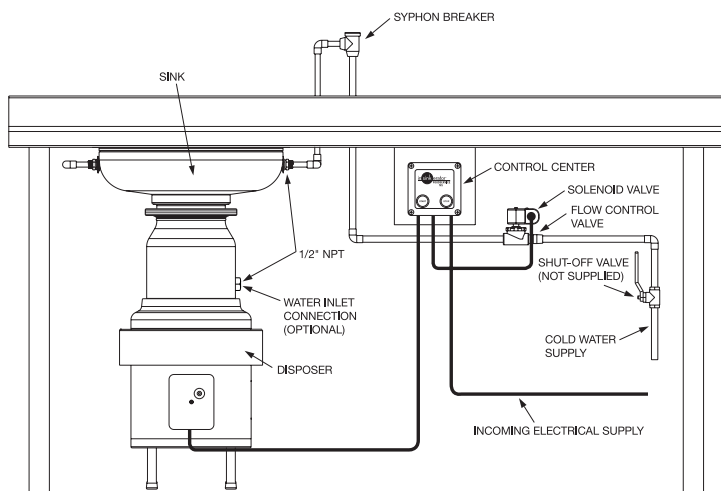
- Push button ON/OFF switch
- High impact polycarbonate construction
- NEMA 4 - water tight enclosure
- Single direction only
- Magnetic starter/provides automatic shut-off in case of power interruption
- Operates on line voltage

VOLTAGE/PHASE AVAILABILITY

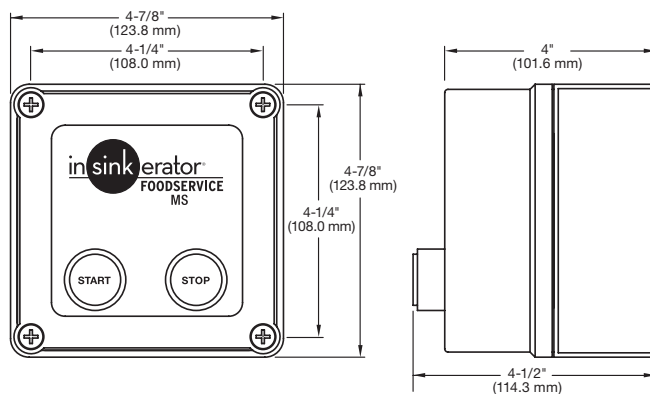
Model	Voltage/Hz	Phase	Disposer Models
MS-4	120V, 50/60 Hz	1 Ph	SS-50 to SS-200
MS-5	208-240V, 50/60 Hz	1 Ph	SS-50 to SS-200
MS-5	208-240V, 50/60 Hz	3 Ph	SS-50 to SS-500
MS-6	380-460V, 50/60 Hz	3 Ph	SS-50 to SS-1000



RECOMMENDED INSTALLATION



DIMENSIONS



NOTE: Use a #8 screw to mount control.

Our products appear on **The KCL CADalog** CD-ROM based CAD Foodservice Symbol Library. More information is available from **Kochman Consultants, Ltd.** at www.kclcad.com.



4700 21st STREET
 RACINE, WI 53406
 TEL: 800-845-8345
 FAX: 262 554-3620
www.insinkerator.com



The Emerson logo is a trademark and a service mark of Emerson Electric Co.

