



Item # _____

Job _____

SUPER ADJUSTABLE™ SUPER ERECTA SHELF® WIRE SHELVING

Super Adjustable™ Super Erecta Wire Shelving is the most advanced and innovative wire storage system available.

- **Maximum Space Utilization:** The Corner Release System encourages repositioning of shelves during initial assembly to reclaim wasted vertical space. In some cases, reclaimed vertical space will allow an extra shelving tier to be added to the storage unit resulting in a 25% increase in storage capacity!
- **Easily Assembled:** The unique Corner Release System enables quick and easy repositioning of shelves during the initial set up to accommodate different package or container sizes. "Total Assembly" is complete only after the shelves are properly spaced to maximize storage. SiteSelect™ Posts, with the double-groove visual guide feature, have circular grooves at 1" (25mm) increments and are numbered at 2" (51mm) intervals to easily identify proper shelf locations.
- **Easily Adjustable:** The unique shelf design and SiteSelect™ Posts enable "tool-free", quick adjustment at 1" (25mm) increments along the entire height of the post.
- **Improved Rigidity:** An enhanced Corner Release System has made Super Adjustable™ the most rigid, easily adjustable shelving system ever.
- **Strong:** Super Adjustable™ shelves hold as much weight as traditional Super Erecta wire shelving. Stationary units hold a maximum of 2,000 lb. (910kg). Maximum weight capacity per shelf (48" [1219mm] or shorter = 800 lb. [364kg]; longer than 48" [1219mm] = 600 lb. [273kg])
- **Choice of Finishes:** Super Adjustable™ Super Erecta shelving is available in a variety of finishes: chrome-plated for dry storage; Metroseal 3™ with antimicrobial product protection and Type 304 stainless steel for corrosive environments.
- **Accessories:** Compatible with the entire system of Super Erecta shelves and accessories. See Catalog Sheets 10.04, 10.05, 10.06 for more information.



Dry Storage — Chrome



Corner Release System

Super Adjustable™ Advantage . . .



Easy "no tool" shelf adjustment

1" 25mm spacing minimizes dead space

Efficient use of space allows more storage levels to be added.

Storage efficiency can increase by 25% or more!



*MICROBAN® and the MICROBAN® symbol are registered trademarks of the Microban Products Company, Huntersville, NC.



InterMetro Industries Corporation
North Washington Street
Wilkes-Barre, PA 18705
www.metro.com





SUPER ADJUSTABLE™ SUPER ERECTA SHELF®
WIRE SHELVING

Dimensions

Super Adjustable™ Super Erecta Wire Shelving

Model No. Chrome	Model No. Metroseal 3	Model No. Stainless	Shelf Width/Length (in.) (mm)		Approx. Pkd. Wt. (lbs.) (kg)	
A1424NC	A1424NK3	A1424NS	14x24	355x610	6	2.7
A1430NC	A1430NK3	A1430NS	14x30	355x760	7	3.2
A1436NC	A1436NK3	A1436NS	14x36	355x914	8	3.6
A1442NC	A1442NK3	A1442NS	14x42	355x1066	9 1/2	4.3
A1448NC	A1448NK3	A1448NS	14x48	355x1219	10 1/2	4.7
A1460NC	A1460NK3	A1460NS	14x60	355x1524	14	6.3
A1472NC	A1472NK3	A1472NS	14x72	355x1829	17	7.7
A1824NC	A1824NK3	A1824NS	18x24	457x610	7	3.2
A1830NC	A1830NK3	A1830NS	18x30	457x760	8	3.6
A1836NC	A1836NK3	A1836NS	18x36	457x914	9 1/2	4.3
A1842NC	A1842NK3	A1842NS	18x42	457x1066	11	5.0
A1848NC	A1848NK3	A1848NS	18x48	457x1219	12	5.4
A1854NC	A1854NK3	A1854NS	18x54	457x1370	14 1/2	6.6
A1860NC	A1860NK3	A1860NS	18x60	457x1524	17	7.7
A1872NC	A1872NK3	A1872NS	18x72	457x1829	20	9.1
A2124NC	A2124NK3	A2124NS	21x24	530x610	8	3.6
A2130NC	A2130NK3	A2130NS	21x30	530x760	9	4.1
A2136NC	A2136NK3	A2136NS	21x36	530x914	11	5.0
A2142NC	A2142NK3	A2142NS	21x42	530x1066	12	5.4
A2148NC	A2148NK3	A2148NS	21x48	530x1219	14	6.4
A2154NC	A2154NK3	A2154NS	21x54	530x1370	16	7.3
A2160NC	A2160NK3	A2160NS	21x60	530x1524	18	8.2
A2172NC	A2172NK3	A2172NS	21x72	530x1829	24	10.9
A2424NC	A2424NK3	A2424NS	24x24	610x610	9	4.1
A2430NC	A2430NK3	A2430NS	24x30	610x760	11	5.0
A2436NC	A2436NK3	A2436NS	24x36	610x914	13	5.9
A2442NC	A2442NK3	A2442NS	24x42	610x1066	15	6.8
A2448NC	A2448NK3	A2448NS	24x48	610x1219	16	7.3
A2454NC	A2454NK3	A2454NS	24x54	610x1370	18	8.6
A2460NC	A2460NK3	A2460NS	24x60	610x1524	21	9.5
A2472NC	A2472NK3	A2472NS	24x72	610x1829	26	11.8
A3036NC		A3036NS	30x36	760x914	15	6.8
A3048NC		A3048NS	30x48	760x1219	21	9.5
A3060NC		A3060NS	30x60	760x1524	26 1/2	11.8
A3072NC		A3072NS	30x72	760x1829	31	14.0
A3636NC		A3636NS	36x36	914x914	18	8.2
A3648NC		A3648NS	36x48	914x1219	23	10.4
A3660NC		A3660NS	36x60	914x1524	29	13.1
A3672NC		A3672NS	36x72	914x1829	34 1/2	15.4

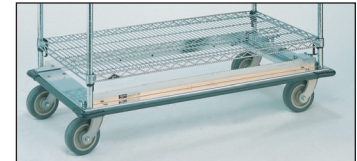


All Environments —
Metroseal 3™ with
*Microban® Antimicrobial
Product Protection

Mobile Options

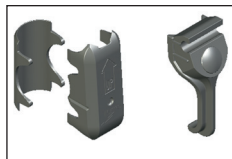


Stem Casters



Dolly Trucks

NOTE: MICROBAN® protects the Metroseal 3 coating from bacteria, mold, mildew and fungi that cause odors, stains and product degradation. For Metroseal 3 shelving information see sheet #10.10A.



Replacement Parts

Each kit includes components for one original Super Adjustable or Super Adjustable shelf; (4) wedges, (4) sleeves, (4) shelf releases.

Model No. SAKITA2

SiteSelect™ Posts

STATIONARY					MOBILE					Approx. Pkd. Wt. (lbs.) (kg)	
Actual Height* (in.) (mm)	Model No. Plated	Model No. Metroseal 3	Model No. Stainless	Actual Height* (in.) (mm)	Model No. Plated	Model No. Metroseal 3	Model No. Stainless				
7 3/8	187	7P	7PK3	7PS	6 3/4	171	7UP	7UPK3	7UPS	1/2	0.3
14 1/8	365	13P	13PK3	13PS	13 3/4	349	13UP	13UPK3	13UPS	1	0.5
28 3/8	720	27P	27PK3	27PS	27 3/4	704	27UP	27UPK3	27UPS	1 3/4	0.75
34 3/8	873	33P	33PK3	33PS	33 3/4	857	33UP	33UPK3	33UPS	2	0.9
54 7/16	1382	54P	54PK3	54PS	53 13/16	1366	54UP	54UPK3	54UPS	3	1.4
62 7/16	1585	63P	63PK3	63PS	61 13/16	1570	63UP	63UPK3	63UPS	3 1/2	1.6
—	—	—	—	—	69 3/4	1771	70UP	—	—	3 3/4	1.7
74 1/2	1892	74P	74PK3	74PS	73 7/8	1876	74UP	74UPK3	74UPS	4	1.8
86 1/2	2197	86P	86PK3	86PS	85 7/8	2181	86UP	86UPK3	86UPS	4 1/2	2.0
96 1/2	2450	**96P	96PK3	96PS	—	—	—	—	—	5 1/2	2.5

* Actual height for the stationary post includes the post cap and the leveling bolt completely tightened.

Important: When ordering by components remember that for maximum stability, units should be kept as wide and low as possible.

All Metro Catalog Sheets are available on our Web Site: www.metro.com



InterMetro Industries Corporation

North Washington Street, Wilkes-Barre, PA 18705
Phone: 570-825-2741 • Fax: 570-825-2852

For Product Information:

U.S. and Canada: 1-800-992-1776

Outside U.S. and Canada: www.metro.com/contactus

L02-006A
Printed in U.S.A. Rev. 4/11

Information and specifications are subject to change without notice. Please confirm at time of order.

Copyright © 2011 InterMetro Industries Corp.

