



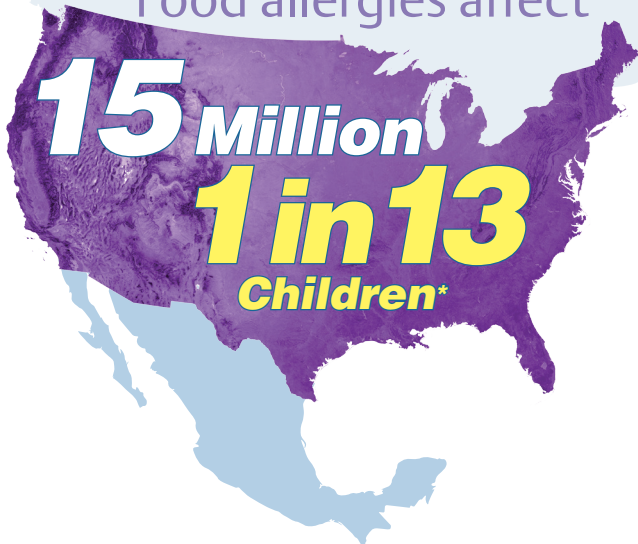
myCart Series™

Control cross-contact and protect your customers with the

Allergen Free Zone

myCart

Food allergies affect



50%

of fatal episodes from food allergens occur outside the home.*

*US - FARE



- myCart personalization labels come 2 per cart.
- Additional legroom puts more distance between the shelves and you.
- Corrosion proof, smooth surfaces easily wipe clean.
- Right-sized for common containers and racks.
- Sturdy construction: 300lb. (136kg), 400lb. (181kg), and 500lb. (227kg) capacity models available.

myCart Series™ is NSF listed



Easy-grip handle and utility tray

- > Small footprint for tight spaces.
- > Accommodates Metro tote boxes and ISO totes.



MY1627

MY2030 cart handle has built-in recessed support channel to manage odd shaped items.

- > Right-sized to fit : Glass & dish racks, bussing totes, silverware bins, milk crates.



MY2030

MY2636 cart handle has a built-in slot to hold scanners and labelers.

- > Ideal for large bulky items. 5" (127mm) caster makes cart easier to maneuver. 3-shelf model holds up to 500lbs.



MY2636



Gray

Black

Blue with built-in Microban antimicrobial product protection

Allergen Purple

Allergen Free Zone myCart:

| Actual Width/Length/Height including the handle (in.) | (mm) | Description | Posts | Load Rating Per Cart (lbs.) | (kg) | Approx. Pkd. Wt. (lbs.) | (kg) | Cat. No. Purple |
|---|-------------------|--------------------|---------------|--------------------------------|------|----------------------------|------|-----------------|
| 23 ⁷ / ₁₆ x 34 ³ / ₈ x 35 ¹ / ₂ | 595x873.3x901.7 | 2-shelf base model | chrome-plated | 300 | 136 | 33 | 14.9 | MY2030-24AP |
| 23 ⁷ / ₁₆ x 34 ³ / ₈ x 35 ¹ / ₂ | 595.3x873.3x901.7 | 3-shelf base model | chrome-plated | 400 | 181 | 41.5 | 18.8 | MY2030-34AP |

Standard Models:

| Actual Width/Length/Height including the handle (in.) | (mm) | Description | Posts | Load Rating Per Cart (lbs.) | (kg) | Approx. Pkd. Wt. (lbs.) | (kg) | Cat. No. Gray | Cat. No. Black | Cat. No. Blue with Antimicrobial |
|--|--------------------|----------------------|-----------------|--------------------------------|------|----------------------------|------|---------------|----------------|----------------------------------|
| 18 ⁵ / ₁₆ x 31 ¹ / ₂ x 35 ¹ / ₂ | 465.2x800.1x901.7 | 2-shelf base model | chrome-plated | 300 | 136 | 28.5 | 12.9 | MY1627-24G | MY1627-24BL | MY1627-24BU |
| 18 ⁵ / ₁₆ x 31 ¹ / ₂ x 35 ¹ / ₂ | 465.2x800.1x901.7 | 3-shelf base model | chrome-plated | 400 | 181 | 34 | 15.4 | MY1627-34G | MY1627-34BL | MY1627-34BU |
| 23 ⁷ / ₁₆ x 34 ³ / ₈ x 35 ¹ / ₂ | 595x873.3x901.7 | 2-shelf base model | chrome-plated | 300 | 136 | 33 | 14.9 | MY2030-24G | MY2030-24BL | MY2030-24BU |
| 23 ⁷ / ₁₆ x 34 ³ / ₈ x 35 ¹ / ₂ | 595.3x873.3x901.7 | 3-shelf base model | chrome-plated | 400 | 181 | 41.5 | 18.8 | MY2030-34G | MY2030-34BL | MY2030-34BU |
| 27 ¹¹ / ₁₆ x 40 ¹ / ₄ x 36 ⁷ / ₈ | 703.3x1022.4x936.6 | 2-shelf base model | chrome-plated | 400 | 181 | 40 | 18.1 | MY2636-25G | MY2636-25BL | MY2636-25BU |
| 27 ¹¹ / ₁₆ x 40 ¹ / ₄ x 36 ⁷ / ₈ | 703.3x1022.4x936.6 | 3-shelf base model | chrome-plated | 500 | 227 | 51 | 23.1 | MY2636-35G | MY2636-35BL | MY2636-35BU |
| 18 ⁵ / ₁₆ x 31 ¹ / ₂ x 35 ¹ / ₂ | 465.2x800.1x901.7 | 2-shelf cart upgrade | stainless steel | 300 | 136 | 28.5 | 12.9 | - | - | MY1627-24BU-SS |
| 18 ⁵ / ₁₆ x 31 ¹ / ₂ x 35 ¹ / ₂ | 465.2x800.1x901.7 | 3-shelf cart upgrade | stainless steel | 400 | 181 | 34 | 15.4 | - | - | MY1627-34BU-SS |

Accessories



Waste Basket

| Model Number | Description | Fits Cart | Width/Height/Depth (in.) | (mm) | Approx. Pkd/Wt. (lbs.) | (kg) |
|--------------|--------------------------------|---------------|--|-------------|---------------------------|------|
| MYWB1 | Wastebasket (including holder) | MY1627 | 17 ⁷ / ₈ x 16 1/4 x 14 3/4 | 454x413x375 | 5.7 | 2.5 |
| MYWB2 | Wastebasket (including holder) | MY2030 | 23 x 16 1/4 x 14 3/4 | 584x413x375 | 5.8 | 2.6 |
| MF222 | Wastebasket Only | MY1627, MY230 | 14 3/8 x 15 3/8 x 10 3/8 | 365x391x264 | 2.8 | 1.3 |



Utility Bin

| Model Number | Description | Fits Cart | Width/Height/Depth (in.) | (mm) | Approx. Pkd/Wt. (lbs.) | (kg) |
|--------------|--------------------------------|---------------|---|-------------|---------------------------|------|
| MYUB1 | Utility Bin (including holder) | MY1627 | 17 ⁷ / ₈ x 7 x 15 1/4 | 454x178x387 | 5 | 2.2 |
| MYUB2 | Utility Bin (including holder) | MY2030 | 23 x 7 x 15 1/4 | 584x178x387 | 5.1 | 2.3 |
| UB1 | Utility Bin Only | MY1627, MY230 | 16 3/8 x 6 x 11 | 416x152x279 | 2 | 0.9 |

© 2015 InterMetro Industries Corporation, Wilkes-Barre, PA 18705
 The Emerson logo is a trademark and a service mark of Emerson Electric Company.
 MICROBAN is a registered trademark of Microban Products Company.
 * Microban® antimicrobial protection does not protect against disease causing microorganisms.



WWW.METRO.COM
1.800.992.1776



EMERSON. CONSIDER IT SOLVED.