

# Seismic Approved

## SINGLE SUPER ERECTA® AND SUPER ADJUSTABLE SUPER ERECTA™ SHELVING UNIT

**APPROVED**  
California Office of Statewide  
Health Planning and Development  
FIXED EQUIPMENT ANCHORAGE  
**R-0129**

### REQUIRED COMPONENTS:

#### OSHPD PREAPPROVED KIT:

Two End Kits, One Back Kit,  
One Footplate Kit, Four Staked Posts.

#### END KIT:

Includes two sway braces which form an "X" on one end of the shelving unit and all mounting hardware.

Two End Kits required per shelving unit.

KIT FOR:	CATALOG #
18"-Wide Unit	SA18EC
21"-Wide Unit	SA21EC
24"-Wide Unit	SA24EC

#### BACK KIT:

Includes two sway braces which form an "X" on back of unit and all mounting hardware.

One Back Kit required per shelving unit.

KIT FOR:	CATALOG #
24"-Long Unit	SA24EC
30"-Long Unit	SA30BC
36"-Long Unit	SA36BC
42"-Long Unit	SA42BC
48"-Long Unit	SA48BC
54"-Long Unit	SA54BC
60"-Long Unit	SA60BC

#### STAKED POSTS:

Note: Four staked posts are required for each unit.

Purchase shelves separately (see Metro® Healthcare Price List).

HEIGHT:	CATALOG #
54"	54SAP
63"	63SAP
74"	74SAP
86"	86SAP

#### FOOTPLATE KIT:

Includes four footplates (one for each staked post). Kit fits any size 4-shelf seismic approved unit.

(see Footplate Selection Chart).

CATALOG #	SAFP
	SAFP-2

### FOOTPLATE SELECTION CHART

DESCRIPTION:

SHELF WT. LOAD CAP./ SQ. FT.	CONCRETE TYPE	EMBEDMENT DEPTH	CATALOG #
30 lb./sq.ft.	Light or Normal	2 1/2"	SAFP
50 lb./sq. ft.	Normal	4"	SAFP
50 lb./sq. ft.	Light	4"	SAFP
50 lb./sq. ft.	Normal	2 1/2"	SAFP-2
50 lb./sq. ft.	Normal at Slab-on-Grade	2 1/2"	SAFP

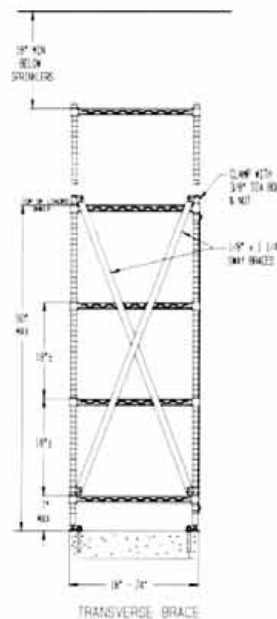


#### EXAMPLE:

A 4-shelf stationary unit, 24" wide x 48" long x 63" high would require the following:

End Kit (2)	SA24EC
Back Kit (1)	SA48BC
Staked Posts (4)	63SAP
Footplate Kit (1)	SAFP

Purchase shelves separately (see Metro® Healthcare Price List).



# Seismic Approved

## BACK-TO-BACK CONNECTED SUPER ERECTA® AND SUPER ADJUSTABLE SUPER ERECTA™ SHELVING UNITS

**APPROVED**  
California Office of Statewide  
Health Planning and Development  
FIXED EQUIPMENT ANCHORAGE  
**R-0129**

### REQUIRED COMPONENTS:

#### OSHPD PREAPPROVED KIT:

Two End Kits, One Back Kit, One Post Clamp Kit,  
Two Footplate Kits, Eight Staked Posts.

#### END KIT:

Includes two sway braces which form an "X" on one end of the shelving unit and all mounting hardware.

Two End Kits are required per each pair of Back-to-Back shelving units.

KIT FOR TWO EACH:	CATALOG #
18"-Wide Unit	SA36BC
21"-Wide Unit	SA42BC
24"-Wide Unit	SA48BEC

KIT FOR TWO EACH:	CATALOG #
18" & 21" Unit	SA39BEC
18" & 24" Unit	SA42BC
21" & 24" Unit	SA45BEC

#### BACK-TO-BACK KIT:

Includes two sway braces which form an "X" on back of connected units and all mounting hardware.

One kit is required per each pair of Back-to-Back shelving units.

KIT FOR:	CATALOG #
24"-Long Unit	SA24EC
30"-Long Unit	SA30BC
36"-Long Unit	SA36BC
42"-Long Unit	SA42BC
48"-Long Unit	SA48BC
54"-Long Unit	SA54BC
60"-Long Unit	SA60BC

#### POST CLAMP KIT:

One kit is required for each pair of "Back-to-Back" shelving units. Kit includes six post clamps.

CATALOG #	SAPC
-----------	------

(Includes six post clamps)

#### STAKED POSTS:

Note: Four staked posts are required for each unit.

Purchase shelves separately (see Metro® Healthcare Price List).

HEIGHT:	CATALOG #
54"	54SAP
63"	63SAP
74"	74SAP
86"	86SAP



#### FOOTPLATE KIT:

Includes four footplates (one for each staked post). Kit fits any size 4-shelf seismic approved unit. (see Footplate Selection Chart).

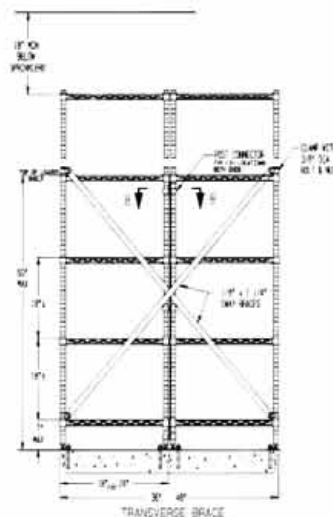
CATALOG #	SAFP
	SAFP-2

#### EXAMPLE:

Two 4-shelf stationary units, 24" wide x 48" long x 63" high connected back-to-back would require the following:

DESCRIPTION	CATALOG #
End Kit (2)	SA48BEC
Back Kit (1)	SA48BC
Staked Posts (8)	63SAP
Footplate Kit (2)	SAFP
Post Clamp Kit (1)	SAPC

Purchase shelves separately (see Metro® Healthcare Price List).

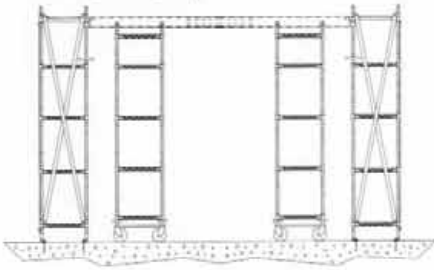


# Seismic Approved

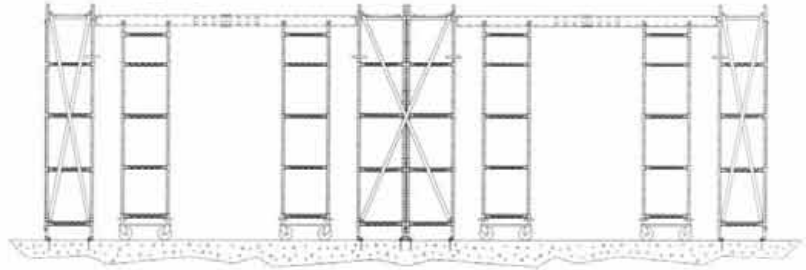
## TOP-TRACK™ HIGH-DENSITY STORAGE SYSTEMS

**APPROVED**  
California Office of Statewide  
Health Planning and Development  
FIXED EQUIPMENT ANCHORAGE  
**R-0220**

Single-Length System



Double-Length System



### SINGLE-LENGTH SYSTEM

#### OSHPD PREAPPROVED KIT:

KIT FOR:	CATALOG #
48"-Stationary End Unit	SA48TTS
54"-Stationary End Unit	SA54TTS
60"-Stationary End Unit	SA60TTS

Includes four shelves, four staked posts, bracket bars, sway braces (for top, back, and end), anchor plates, footplates, tubular braces, clamps, and assembly hardware.

Note: Floor anchoring hardware not included.

KIT FOR:	CATALOG #
48"-Wide Unit	TTB48STRUT
54"-Wide Unit	TTB54STRUT
60"-Wide Unit	TTB60STRUT

#### EXAMPLE:

For a complete "Single-Length Top-Track™ System," the following would be required:

- Two Stationary End Units
- One Track Set\* (11-foot maximum)

- One Center Strut (if track length exceeds 7 feet)
- Mobile Units\*

### DOUBLE-LENGTH SYSTEM

#### OSHPD PREAPPROVED KIT:

KIT FOR:	CATALOG #
48"-Stationary End Unit	SA48TTS
54"-Stationary End Unit	SA54TTS
60"-Stationary End Unit	SA60TTS

Includes four shelves, four staked posts, bracket bars, sway braces (for top, back, and end), anchor plates, footplates, tubular braces, clamps, and assembly hardware.

Note: Floor anchoring hardware not included.

KIT FOR:	CATALOG #
48"-Stationary Intermediate Unit	SA48TTIS
54"-Stationary Intermediate Unit	SA54TTIS
60"-Stationary Intermediate Unit	SA60TTIS

Includes eight shelves, eight staked posts, bracket bars, sway braces (for top, back, and end), anchor plates, footplates, tubular braces, clamps, and assembly hardware.

Note: Floor anchoring hardware not included.

KIT FOR:	CATALOG #
48"-Wide Unit	TTB48STRUT
54"-Wide Unit	TTB54STRUT
60"-Wide Unit	TTB60STRUT

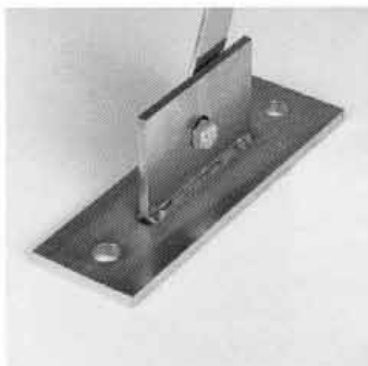
#### EXAMPLE:

For a complete "Double-Length Top-Track™ System," the following would be required:

- Two Stationary End Units
- Two Track Sets\* (11-foot maximum)
- One Intermediate Unit
- Two Center Struts (if track length exceeds 7 feet)
- Mobile Units\*

Note: Posts and shelves are included in the end and intermediate unit kits. Shelves are sold separately for the mobile units.

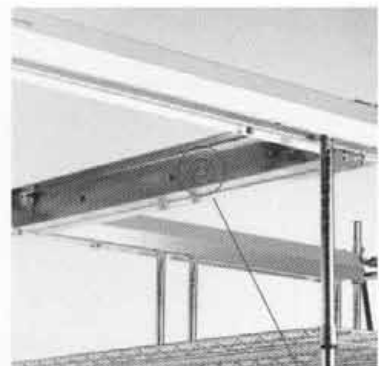
\*See Metro® Healthcare Price List or Catalog Sheet #11.12 for additional information on both single- and double-length systems.



Anchor Plate (Single)



Footplate



Track Set with Center Strut

**I**nterMetro Industries Corporation has been granted seismic approval by the California Office of Statewide Health Planning and Development (OSHPD) for freestanding Super Erecta® and Super Adjustable Super Erecta™ Shelving Units.

The Super Erecta Seismic Shelving System underwent rigorous tests to ensure that it would withstand the devastation caused by earthquakes.

As the industry leader in storage and distribution solutions, InterMetro® recognizes the vital importance of disaster preparation. Securing OSHPD approval for freestanding and high-density Super Erecta shelving is our way of assisting you in this process. **This approval allows your hospital facility's engineering staff to order standard components already preapproved and ready for immediate installation.**

---

#### **FREESTANDING UNITS R-0129**

##### **Notes:**

- 1.) Floor anchors are not included. The structural engineer of record must verify that the anchorage bolt and building structure are adequate for the applied load.
- 2.) For OSHPD approval, the highest-loaded shelf must be no more than 60" from the floor.
- 3.) For OSHPD approval, a unit must have no more than four loaded shelves within a 60" height.
- 4.) If a fifth shelf is used, it must serve only as a cover and not be used for load bearing.
- 5.) According to the California State Fire Marshall, there must be a clearance of at least 18" below sprinkler systems.
- 6.) Each shelving unit, whether single or "back-to-back," cannot connect to other shelving units or walls.
- 7.) OSHPD preapproval is based upon a weight loading capacity of 30 or 50 lb. per square foot with 2<sup>1</sup>/<sub>2</sub>" or 4" anchor bolt embedment options.

#### **TOP-TRACK™ HIGH-DENSITY STORAGE R-0220**

##### **Notes:**

- 1.) Each installation must have two stationary end units for a single-track length of 7' (2135 mm) to 11' (3355 mm).
- 2.) A center strut is required for each track section over 7' (2135 mm).
- 3.) For track lengths over 11' (3355 mm), an intermediate unit is required, thus creating a double-length system.
- 4.) OSHPD preapproval is based upon a weight-loading capacity of 25 lb (11 kg) per square foot on four-shelf stationary and mobile units, with a maximum of 900 lb (410 kg) per mobile unit. Additional shelves may be added, but are limited to a maximum load of 25 lb (11 kg) per cubic foot per unit.
- 5.) A maximum of four 21" (530 mm) or 24" (610 mm), or five 18" (455 mm) mobile units are allowed per an 11' (3355 mm) track length, with no more than a 900 lb (410 kg) weight capacity per mobile unit.
- 6.) Stationary End Units are available in 24" x 48" (610 x 1220 mm), 24" x 54" (610 x 1370 mm), and 24" x 60" (610 x 1525 mm) sizes.
- 7.) OSHPD preapproved design is based on the use of HR concrete, at least 5<sup>1</sup>/<sub>2</sub>" (140 mm) thick, with a compressive strength of 3000 psi. Anchorage is not included.