



Conserver[®] XL-E

Project _____
Item _____
Quantity _____
CSI Section 11400
Approval _____
Date _____

Conserver[®] XL-E

Models

Conserver[®] XL-E



Standard Features

- Electromechanical controls
- Internal sump design
- Built-in waste accumulator
- 3" (76 mm) stainless steel adjustable bullet feet
- Delimer switch for easy removal of hard water deposits
- Removable scrap screen
- Air gap instead of vacuum breaker
- Door safety switch
- Convenient top mounted controls
- Auto start
- Interchangeable upper and lower stainless steel wash/rinse arms
- Wash thermometer
- Low product indicator light

Mandatory Specs

Specify voltage _____

Options

- ☐ Water Hammer Arrestor
- ☐ Scaltrol
- ☐ False Panel
- ☐ Flanged Feet
- ☐ Audible Low Product Alarm

Accessories

- ☐ 36-Compartment Rack
 - ☐ 4-1/8" tall (105 mm)
 - ☐ 5-5/8" tall (143 mm)
 - ☐ 7" tall (178 mm)
- ☐ Combination Rack
- ☐ Peg Rack

Specifications

Uses 1.02 gallons (3.9 liters) water per rack

39 racks per hour (Normal cycle)

Single point electrical connection

Self-draining stainless steel pump eliminates soil/detergent carryover between wash and rinse cycles

Dump and fill feature disposes of dirty water, replacing it with a fresh water rinse every cycle

Field convertible from straight to corner and corner to straight for flexible installations and applications

18-1/2" (470 mm) vertical inside clearance

3 built-in dispensing pumps for detergent, rinse agent and sanitizer are controlled by individual priming switches

Large removable scrap screen

Heavy duty stainless steel construction



Intertek



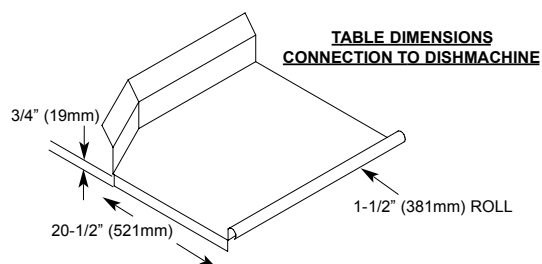
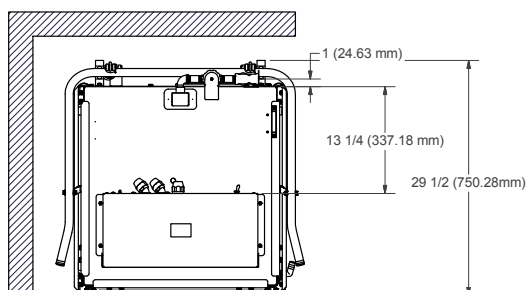
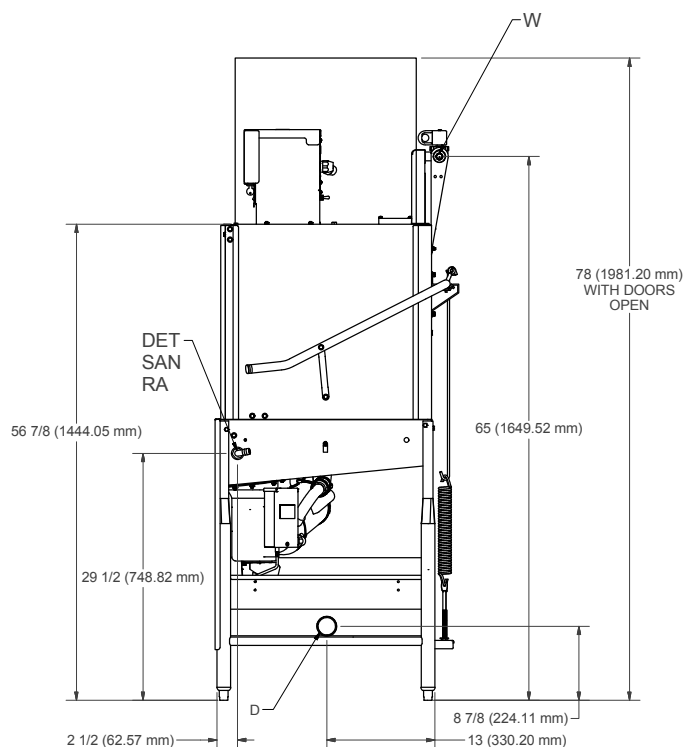
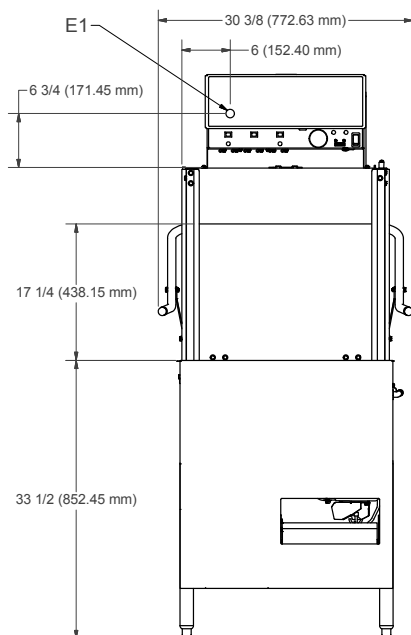


Conserv[®] XL-E

Legend:

E1: Main Electrical Connection (1-1/8" DIA Hole)
W: Main Inlet Water Connection (1/2" NPT - Female)
D: Drain Connection (2" NPT - Male)
DET: Detergent Bulkhead Access (7/8" DIA Hole)
SAN: Sanitizer Inlet
RA: Rinse Aid Inlet

ALL DIMENSIONS ARE ±1/2"



MODEL NO.	MACHINE DIMENSIONS				DRAIN HEIGHT	SHIPPING INFORMATION					
	HEIGHT	WIDTH	WIDTH BETWEEN DISHTABLES	DEPTH		WEIGHT	CLASS	CUBE	HEIGHT	WIDTH	DEPTH
Conserv® XL-E	68-1/2" (1740 mm)	30-3/8" (772 mm)	25-1/4" (641 mm)	29-1/2" (749 mm)	9" (229 mm)	241 lbs (109 kg)	92.5	64.9 cu. ft.	79" (2007 mm)	33" (838 mm)	43" (1092 mm)
POWER REQUIREMENTS						PERFORMANCE CAPABILITIES					
Electrical Requirement				115V/60HZ/1PH - 11.4A		Flow Pressure (PSI)				15	
Service Breaker Size				15A		Wash Pump Motor Horsepower				3/4	
WATER REQUIREMENTS						Pump Capacity (GPM)				55	
			MINIMUM	RECOMMENDED		Minimum Chlorine Required (PPM)				50	
Inlet Temperature			120°F (49 °C)	140°F (60 °C)		HOW TO SPECIFY: Conserv® XL-E					
Wash Operating Temperature			120°F (49 °C)	140°F (60 °C)							
Rinse Operating Temperature			120°F (49 °C)	140°F (60 °C)							

HOW TO SPECIFY: Conserv[®] XL-E

Jackson WWS, Inc.

Shipping Address: 6209 North U.S. Highway 25E, Gray, KY 40734

Mailing Address: P.O.Box 1060, Barbourville, KY 40906

Telephone: 888-800-5672 • Fax: 606-523-1799

Email: info@jacksonwws.com

07610-004-00-91 [04/10/14]

www.jacksonwws.com

We reserve the right to change specifications in this bulletin without incurring any obligation for equipment previously or subsequently sold.