



Conserver® XL

Project _____
Item _____
Quantity _____
CSI Section 11400
Approval _____
Date _____

Conserver® XL

Models

Conserver® XL



Standard Features

- Electromechanical control
- Built in waste accumulator
- 3" (76 mm) stainless steel adjustable bullet feet
- Delimer switch for easy removal of hard water deposits
- Removable scrap screen
- Air gap instead of vacuum breaker
- Door safety switch
- Convenient top mounted controls
- Auto start
- Interchangeable upper and lower stainless steel wash/rinse arms
- Wash/rinse thermometer
- Low product indicator light

Mandatory Specs

Specify voltage _____

Options

- ☐ 50Hz Cycle
- ☐ Water Hammer Arrestor
- ☐ Scaltrol
- ☐ False Panel
- ☐ Flanged Feet
- ☐ Audible Low Product Alarm

Specifications

Uses 1.5 gallons (6 liters) water per rack

37 racks per hour

Single point electrical connection

Self-draining stainless steel pump eliminates soil/detergent carryover between wash and rinse cycles

Dump and fill feature disposes of dirty water, replacing it with a fresh water rinse every cycle

Field convertible from straight to corner and corner to straight for flexible installations and applications

Dual-point drain connections allow for versatile installations

17-1/4" (438 mm) vertical inside clearance

3 built-in dispensing pumps for detergent, rinse agent and sanitizer are controlled by individual priming switches

Fully automatic timed cycles - 90 seconds, 3 minutes or 5 minutes

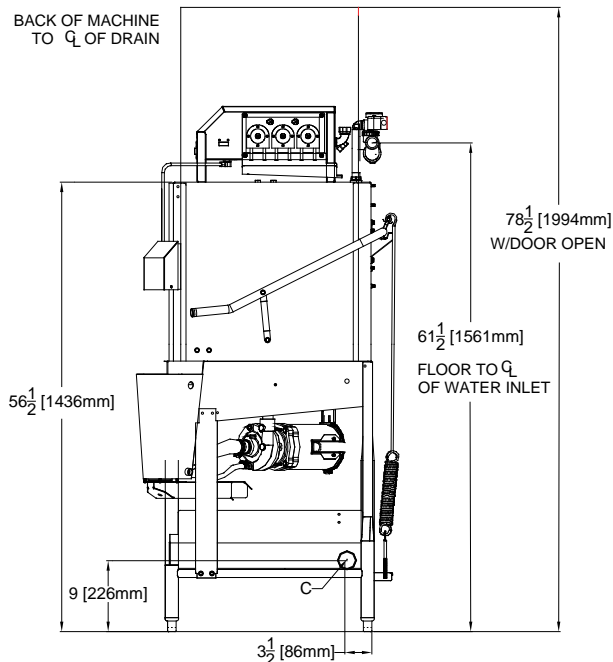
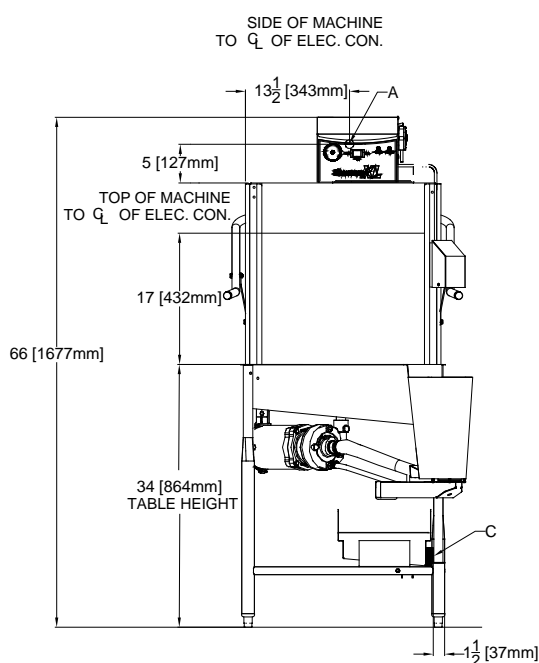
Large removable scrap screen

Heavy duty stainless steel construction



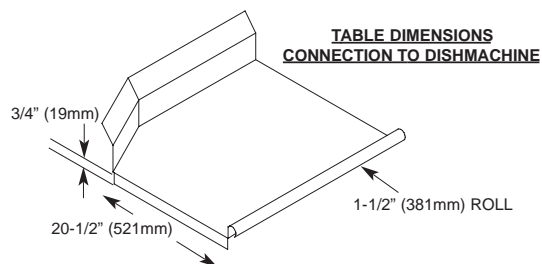
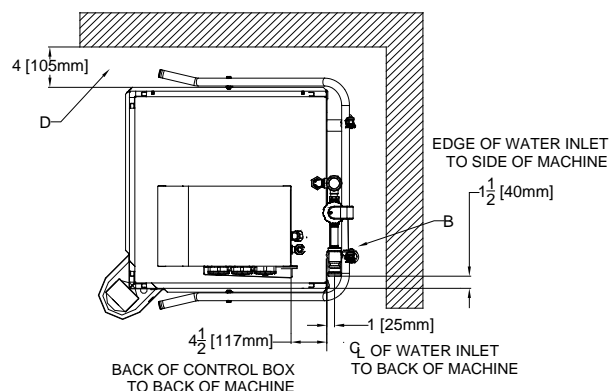


Conserv[®] XL



LEGEND
 A - ELECTRICAL CONNECTION
 B - WATER INLET, 3/4" IPS
 C - DRAIN CONNECTION, 2" IPS
 D - STANDARD CLEARANCE BETWEEN MACHINE AND WALL (WITH DISHTABLE) IS 4" [105mm]

All dimensions are +/- 1/2" from floor due to adjustable bullet feet



MODEL NO.	MACHINE DIMENSIONS				DRAIN HEIGHT	SHIPPING INFORMATION					
	HEIGHT	WIDTH	WIDTH BETWEEN DISHTABLES	DEPTH		WEIGHT	CLASS	CUBE	HEIGHT	WIDTH	DEPTH
Conserv® XL	68-1/2" (1740 mm)	33" (838 mm)	25-1/4" (641 mm)	32-3/4" (832 mm)	9" (229 mm)	280 lbs (127 kg)	92.5	64.9 cu. ft.	79" (2007 mm)	33" (838 mm)	43" (1092 mm)
POWER REQUIREMENTS						PERFORMANCE CAPABILITIES					
Model				Conserv®XL		Flow Pressure (PSI)				15-25	
Electrical Requirement				115v/60~1ø-11.4A		Wash Pump Motor Horsepower				3/4	
Service Breaker Size				15A		Pump Capacity (GPM)				55	
WATER REQUIREMENTS						Minimum Chlorine Required (PPM)					
		MINIMUM		RECOMMENDED							
Inlet Temperature		120°F (49 °C)		140°F (60 °C)							
Wash Operating Temperature		120°F (49 °C)		140°F (60 °C)							
Rinse Operating Temperature		120°F (49 °C)		140°F (60 °C)							
HOW TO SPECIFY: Conserv® XL											

HOW TO SPECIFY: Conserv[®] XL

Jackson WWS, Inc.

Shipping Address: 6209 North U.S. Highway 25E, Gray, KY 40734

Mailing Address: P.O.Box 1060, Barbourville, KY 40906

Telephone: 888-800-5672 • Fax: 606-523-1799

Email: info@jacksonwws.com

07610-002-66-3 [03/06/13]

www.jacksonwws.com

We reserve the right to change specifications in this bulletin without incurring any obligation for equipment previously or subsequently sold.