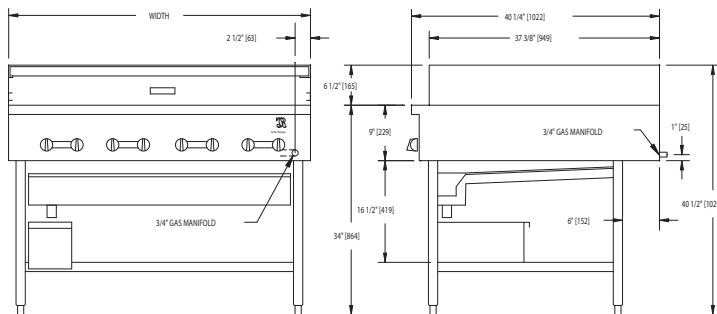




CHICKEN BROILER HIGH PRODUCTION



JCBH-48



| MODEL | BURNERS | WIDTH | DEPTH | HEIGHT | BTUS |
|----------|---------|-------|---------|---------|---------|
| JCBH-24 | 4 | 24" | 40-1/4" | 40-1/2" | 100,000 |
| JCBH-30 | 5 | 30" | 40-1/4" | 40-1/2" | 125,000 |
| JCBH-36 | 6 | 36" | 40-1/4" | 40-1/2" | 150,000 |
| JCBH-42 | 7 | 42" | 40-1/4" | 40-1/2" | 175,000 |
| JCBH-48 | 8 | 48" | 40-1/4" | 40-1/2" | 200,000 |
| JCBH-60* | 10 | 60" | 40-1/4" | 40-1/2" | 250,000 |
| JCBH-72* | 12 | 72" | 40-1/4" | 40-1/2" | 300,000 |

* 1" regulator recommended

MODEL NO.

DESCRIPTION

| | |
|----------------------------------|-------------------------------------|
| <input type="checkbox"/> JCBH-24 | 24" HIGH PRODUCTION CHICKEN BROILER |
| <input type="checkbox"/> JCBH-30 | 30" HIGH PRODUCTION CHICKEN BROILER |
| <input type="checkbox"/> JCBH-36 | 36" HIGH PRODUCTION CHICKEN BROILER |
| <input type="checkbox"/> JCBH-42 | 42" HIGH PRODUCTION CHICKEN BROILER |
| <input type="checkbox"/> JCBH-48 | 48" HIGH PRODUCTION CHICKEN BROILER |
| <input type="checkbox"/> JCBH-60 | 60" HIGH PRODUCTION CHICKEN BROILER |
| <input type="checkbox"/> JCBH-72 | 72" HIGH PRODUCTION CHICKEN BROILER |

STANDARD FEATURES

- Extra deep
- 14 gauge stainless steel all welded body construction
- Precision individual control of burners
- One burner for every 6" of broiler width
- Stainless steel superstructure (removable for cleaning) offers 4 levels of broiling and gives an additional 4" of cooking space at the rear
- High production burner output is 25,000 BTU/hr. each—actual broiling area available from 6.2 sq. ft. to 18.6 sq. ft.
- Specially designed flame control grates
- Extra large self-draining gutter, grease drawer and shelf
- 12 gauge all welded firebox construction
- 3/4" gas regulator
- Stainless steel front and sides, plate shelf
- Stainless steel legs and bottom shelf

AVAILABLE OPTIONS

- Stainless steel drip deflector and grease drawer

ACCESSORIES

- 6" casters, front two locking (3" diameter wheel)
- 36" flex hose with quick disconnect and restraining device
- 48" flex hose with quick disconnect and restraining device

NOTE: SPECIFY TYPE OF GAS WHEN ORDERING.

UTILITY INFORMATION:

- 3/4" connection (see drawing for location)
- Required operating pressure:
Natural Gas 5" W.C. minimum
Propane Gas 10" W.C. minimum
14" W.C. maximum

Note: This unit must be connected with the gas appliance regulator supplied.

SPECIFY TYPE OF GAS WHEN ORDERING.

SPECIFY ALTITUDE WHEN ABOVE 2,000 FT.



WWW.JADERANGE.COM

JADE RANGE, LLC., A MIDDLEBY COMPANY • 2650 Orbiter Street • Brea, CA 92821 • PHONE: 800-884-5233 FAX: 714-961-2550
Note: In line with their policy to continually improve products, Jade reserves the right to change materials and specifications without notice. PRINTED IN USA