



# RADIANT BROILER

TITAN RADIANT BROILER



JMHR-36H with JRLH-02R-T-36

## DESCRIPTION:

Heavy duty radiant gas broiler. To be model #JSHBR \_\_\_\_\_ manufactured by Jade Range. Provide with six 15,000 BTU/hr. stainless steel burners and ceramic radiants. Provide large lift out 26-1/2" x 28-1/4" cook grid. Furnish carriage complete with rolling bearings and multi-action handle. To have 14 gauge all welded body with stainless steel front and sides. Stainless steel 6" plate shelf. To have 6" stainless steel adjustable legs.

## SPECIFY BASE

### STANDARD OVEN

To have conventional oven base with stainless steel lining. Oven sides and bottom to be removable without tools. Provide with two oven racks. Thermostat to adjust from 150°F to 550°F with 35,000 BTU burner. Oven interior 28-1/4" W x 14" H x 27-3/4" D.

### CONVECTION OVEN

To have convection base with 14 gauge stainless steel interior. Provide with two oven racks. Thermostat to adjust from 150°F to 550°F with 30,000 BTU burner. Provide with 1/3 HP 115/60/1 blower motor. Oven interior 28" W x 13-3/4" H x 24-1/2" D.

### CABINET BASE

To have stainless steel cabinet interior and exterior. Optional stainless steel doors.

## SPECIFY TYPE OF GAS WHEN ORDERING.

## SPECIFY ALTITUDE WHEN ABOVE 2,000 FT.

## MODEL NO. DESCRIPTION

<input type="checkbox"/> JSHBR-36H-36	RADIANT BROILER W/ STANDARD OVEN & WARMING OVEN
<input type="checkbox"/> JSHBR-36H-36C	RADIANT BROILER W/ CONVECTION OVEN & WARMING OVEN
<input type="checkbox"/> JSHBR-36H	RADIANT BROILER W/ CABINET BASE & WARMING OVEN
<input type="checkbox"/> JSHBR-36-36	RADIANT BROILER W/ STANDARD OVEN
<input type="checkbox"/> JSHBR-36-36C	RADIANT BROILER W/ CONVECTION OVEN
<input type="checkbox"/> JSHBR-36	RADIANT BROILER W/ CABINET BASE
<input type="checkbox"/> JMHR-36	MODULAR RADIANT BROILER

## STANDARD FEATURES

- Six 15,000 BTU/hr. stainless steel burners
- Variable size multi-point gas connection—see utility information for details
- Ceramic radiants
- Large 26-1/2" x 28-1/4" lift out broiler grid
- Grid carriage glides on roller bearing
- Counter balance mechanism
- Stainless steel front, sides and top
- 14 gauge stainless steel all welded body construction
- Stainless steel removable oven interior
- Two chrome plated oven racks (wires curled and welded around main frame with no sharp ends)
- Oven control located in cool zone
- Stainless steel 6" plate shelf
- Stainless steel gas tubing throughout
- Stainless steel adjustable 6" legs
- Stainless steel tray bed

## AVAILABLE OPTIONS

- Cap and cover manifold. Left  Right
- Stainless steel doors (cabinet base models)

## ACCESSORIES

- 6" casters, front two locking (5" diameter wheel)
- 36" flex hose with quick disconnect (3/4" connection)
- 48" flex hose with quick disconnect (3/4" connection)
- 1" gas pressure regulator (specify gas type)
- 1-1/4" gas pressure regulator (specify gas type)
- Additional oven rack (two supplied with range)



For refrigeration



For cooking

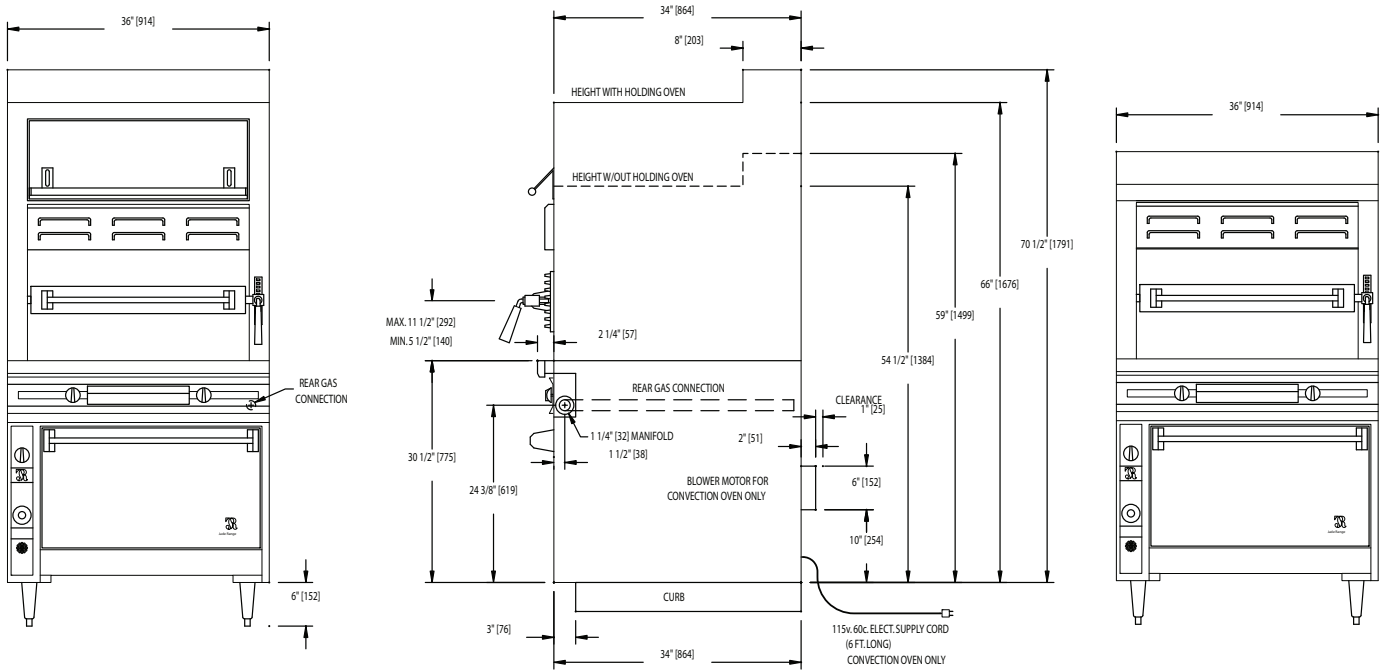
WWW.JADERANGE.COM

JADE RANGE, LLC., A MIDDLEBY COMPANY • 2650 Orbiter Street • Brea, CA 92821 • PHONE: 800-884-5233 FAX: 714-961-2550  
 Note: In line with their policy to continually improve products, Jade reserves the right to change materials and specifications without notice. PRINTED IN USA





# RADIANT BROILER



MODEL	BTUS	WIDTH	DEPTH	HEIGHT	APPX. SHP. WT.
JSHBR-36H-36	125,000	36"	36-1/4"	SEE DRAWING	1000 LBS.
JSHBR-36H-36C	120,000	36"	36-1/4"	SEE DRAWING	1050 LBS.
JSHBR-36H	90,000	36"	36-1/4"	SEE DRAWING	800 LBS.
JSHBR-36-36	125,000	36"	36-1/4"	SEE DRAWING	850 LBS.
JSHBR-36-36C	120,000	36"	36-1/4"	SEE DRAWING	900 LBS.
JSHBR-36	90,000	36"	36-1/4"	SEE DRAWING	700 LBS.
JMHBR-36	90,000	36"	36-1/4"	SEE DRAWING	500 LBS.

**ELECTRIC CONVECTION OVEN ONLY:**

- Power Supply: 115/60/1 - 6 foot cord with 3 prong plug
- Total maximum amps 4.0/oven
- Electronic Spark Ignitor: activated by power switch, ignites standing pilot
- Fan Switch: three positions, on for normal operation, on for quick cool down, off.

**NOTE: SPECIFY TYPE OF GAS WHEN ORDERING.**

**UTILITY INFORMATION:**

- Ranges are supplied with 1-1/4" front manifold connection and a 1" or 3/4" capped rear manifold connection. For rear manifold connection, remove cap. Ranges are supplied with 3/4" gas pressure regulator. For 1-1/4" or 1" gas pressure regulator, see accessories. (Specify required front manifold cap and cover when ordering.)
- Required operating pressure:  
 Natural Gas 5" W.C. minimum  
 Propane Gas 10" W.C. minimum  
 14" W.C. maximum

**Note:** This unit must be connected with the gas appliance regulator supplied.