



# CHARBROILER COMBINATION RANGE

TITAN CHARBROILER COMBINATION RANGE



JTRH-24B-2-36

## DESCRIPTION:

Charbroiler range. To be model #JTRH \_\_\_\_\_ manufactured by Jade Range. Furnished with 14 gauge all welded body construction and stainless steel front, top, sides and high riser. Provide with heavy duty cast iron top grates and burner radiants. To have one individually controlled 15,000 BTU/hr. burner for every 6" of broiler. Provide 12 gauge firebox with all welded construction. Furnish two separate 14 gauge drip pans. To have 6" stainless steel adjustable legs.

- Open top sections to have 35,000 BTU/hr. cast iron burners.
- Hot Tops to have cast iron even heat top with one 35,000 BTU/hr. burner per section.
- French Tops to have 35,000 BTU/hr. cast iron burner.

## SPECIFY BASE

### STANDARD OVEN

To have conventional oven base with stainless steel lining. Oven sides and bottom to be removable without tools. Provide with two oven racks. Thermostat to adjust from 150°F to 550°F with 35,000 BTU burner. Oven interior 28-1/4" W x 14" H x 27-3/4" D.

### CONVECTION OVEN

To have convection base with 14 gauge stainless steel interior. Provide with two oven racks. Thermostat to adjust from 150°F to 550°F with 35,000 BTU burner. Provide with 1/3 HP 115/60/1 blower motor. Oven interior 28" W x 13-3/4" H x 24-1/2" D.

## SPECIFY TYPE OF GAS WHEN ORDERING.

## SPECIFY ALTITUDE WHEN ABOVE 2,000 ft.

## MODEL NO.

## DESCRIPTION

<input type="checkbox"/> JTRH-24B-2-36	24" BROILER/2 OPEN BURNERS WITH OVEN
<input type="checkbox"/> JTRH-24BHT-36	24" BROILER/12" HOT TOP WITH OVEN
<input type="checkbox"/> JTRH-24B-12WT-36	24" BROILER/12" WORK TOP WITH OVEN
<input type="checkbox"/> JTRH-18B-2-36	18" BROILER/2 OPEN BURNERS WITH OVEN
<input type="checkbox"/> JTRH-18B-IHT-36	18" BROILER/18" HOT TOP WITH OVEN
<input type="checkbox"/> JTRH-18B-FHT-36	18" BROILER/FRENCH TOP WITH OVEN
<input type="checkbox"/> JTRH-18B-18WT-36	18" BROILER/18" WORK TOP WITH OVEN

**Notes:** Broiler must be located on left of range. For convection oven in lieu of standard oven, add "C" to model number. For example JTRH-24B-2-36C.

## STANDARD FEATURES

- Variable size multi-point gas connection—see utility information for details
- Heavy duty cast iron top grates with built-in grease guides that channel away excess fat and reduce flaring
- One 15,000 BTU/hr. burner every 6" broiler
- Infinite control manual gas valves at each burner for precise heat control
- Heavy duty cast iron burner radiants
- 12 gauge all welded firebox construction
- Two separate 14 gauge steel drip pans to control flare ups
- Stainless steel 6" plate shelf
- Stainless steel front and stub back
- 14 gauge all welded body construction
- Stainless steel removable oven interior
- Stainless steel gas tubing throughout
- Stainless steel pilot tips
- Stainless steel adjustable 6" legs
- Stainless steel tray bed
- 3/4" gas regulator (shipped loose, must be installed for proper operation)

## AVAILABLE OPTIONS

- Stainless steel high riser
- Stainless steel double high riser
- Stainless steel tubular high shelf
- Stainless steel tubular double high shelf
- Fish grate (round bars)
- Stainless steel sides
- Common plate shelf with Item(s) Model(s) \_\_\_\_\_
- Cap and cover manifold. Left  Right

## ACCESSORIES

- 6" casters, front two locking (5" diameter wheel)
- 36" flex hose with quick disconnect (3/4" connection)
- 48" flex hose with quick disconnect (3/4" connection)
- 1" gas pressure regulator (specify gas type)
- 1-1/4" gas pressure regulator (specify gas type)



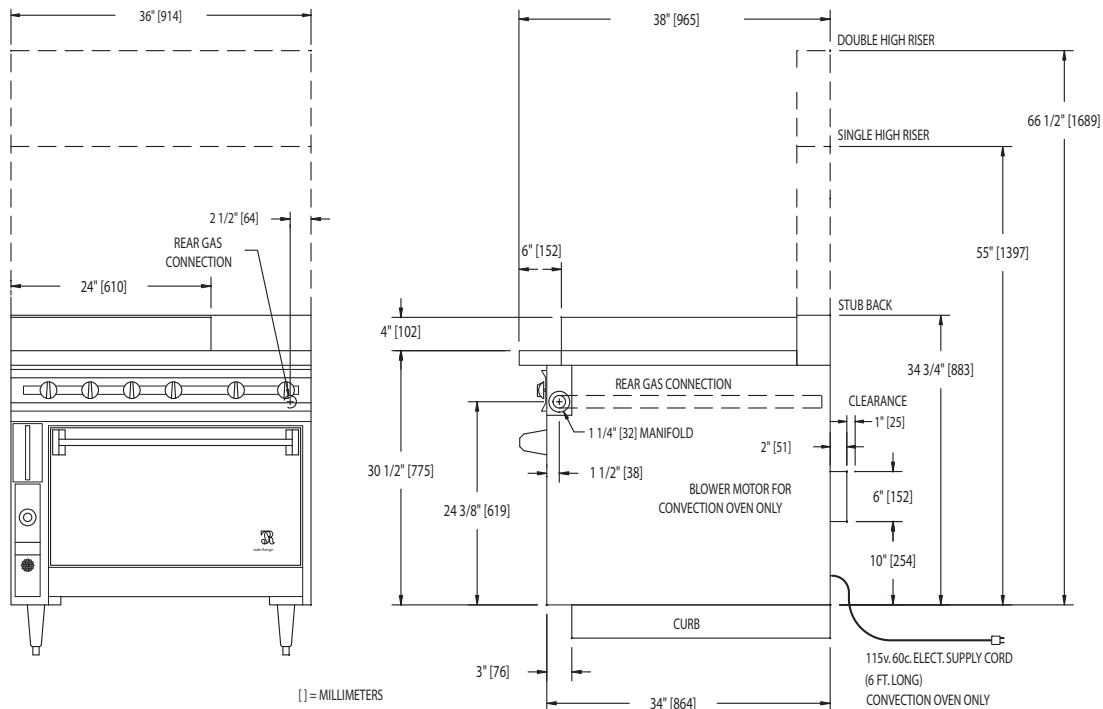
WWW.JADERANGE.COM

JADE RANGE, LLC., A MIDDLEBY COMPANY • 2650 Orbiter Street • Brea, CA 92821 • PHONE: 800-884-5233 FAX: 714-961-2550  
 Note: In line with their policy to continually improve products, Jade reserves the right to change materials and specifications without notice. PRINTED IN USA





# CHARBROILER COMBINATION RANGE



MODEL	BTUS	WIDTH	DEPTH	HEIGHT	APPX. SHP. WT.
JTRH-24B-2-36(C)	165,000 (160,000)	36"	38"	SEE DRAWING	795 LBS.
JTRH-24B-1HT-36(C)	130,000 (125,000)	36"	38"	SEE DRAWING	785 LBS.
JTRH-24B-12WT-36(C)	95,000 (90,000)	36"	38"	SEE DRAWING	705 LBS.
JTRH-18B-2-36(C)	150,000 (145,000)	36"	38"	SEE DRAWING	760 LBS.
JTRH-18B-1HT-36(C)	115,000 (110,000)	36"	38"	SEE DRAWING	695 LBS.
JTRH-18B-1FHT-36(C)	110,000 (105,000)	36"	38"	SEE DRAWING	695 LBS.
JTRH-18B-18WT-36(C)	80,000 (75,000)	36"	38"	SEE DRAWING	605 LBS.

**ELECTRIC CONVECTION OVEN ONLY:**

- Power Supply: 115/60/1 - 6 foot cord with 3 prong plug
- Total maximum amps 4.0/oven
- Electronic Spark Ignitor: activated by power switch, ignites standing pilot
- Fan Switch: three positions, on for normal operation, on for quick cool down, off.

**NOTE: SPECIFY TYPE OF GAS WHEN ORDERING.**

**UTILITY INFORMATION:**

- Ranges are supplied with 1-1/4" front manifold connection and a 1" or 3/4" capped rear manifold connection. For rear manifold connection, remove cap. Ranges are supplied with 3/4" gas pressure regulator. For 1-1/4" or 1" gas pressure regulator, see accessories. (Specify required front manifold cap and cover when ordering.)
- Required operating pressure:  
 Natural Gas 5" W.C. minimum  
 Propane Gas 10" W.C. minimum  
 14" W.C. maximum

**Note:** This unit must be connected with the gas appliance regulator supplied.



WWW.JADERANGE.COM

JADE RANGE, LLC., A MIDDLEBY COMPANY • 2650 Orbiter Street • Brea, CA 92821 • PHONE: 800-884-5233 FAX: 714-961-2550  
 Note: In line with their policy to continually improve products, Jade reserves the right to change materials and specifications without notice. PRINTED IN USA